



New 2021 Forecast for Pleasantdale Elementary School Redistricting

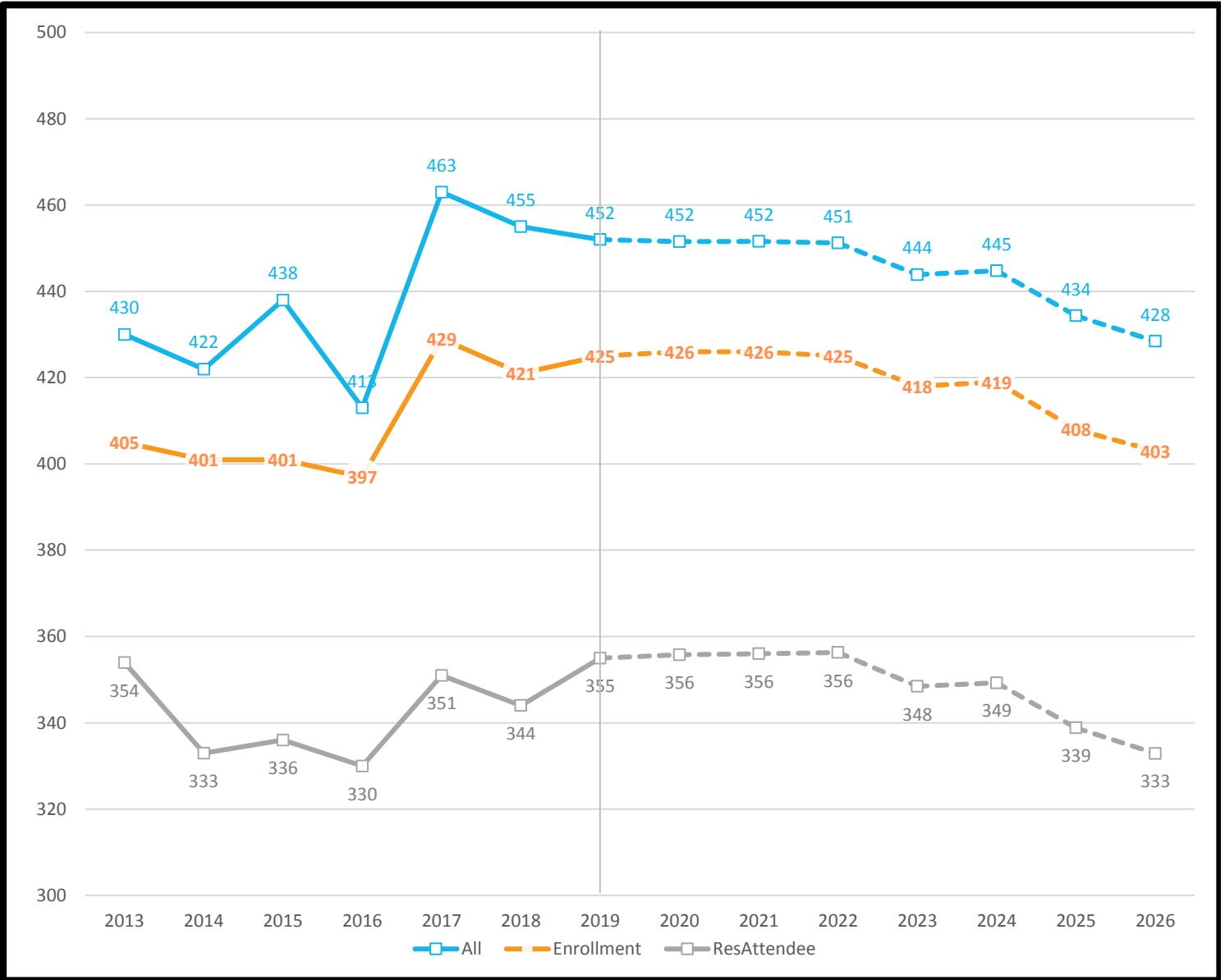
SCH	Name	Round 2 2021 Forecast	New 2021 Forecast	Difference	Note
132	Briarlake Elementary School	407	426	19	3-year average mobility rates are higher than the 2-year average. See note below*
185	Evansdale Elementary School	576	612	36	Corrected Kindergarten rate. See note below**
213	Hawthorne Elementary School	393	365	-28	3-year average mobility rates are lower than the 2-year average. See note below*
215	Henderson Mill Elementary School	523	555	32	Updated Kindergarten rate to a 2-year average birth-to-kindergarten ratio
315	Pleasantdale Elementary School	673	695	+22	3-year average mobility rates are lower than the 2-year average. See note below*
305	Oak Grove Elementary School	424	493	69	Corrected Kindergarten rate. See note below**
350	Sagamore Hills Elementary School	435	438	3	

*Round 2 forecast used a default 2-year average in mobility rates and the New 2021 forecast uses a default 3 year forecast.

**New 2021 forecast corrected Kindergarten growth rate calculation error in Round 2 forecast that affected several elementary schools.

Historic Enrollment (7-years) and Long-Term Forecast (7-years)

*All forecasts are estimates only and are subject to change as data and assumptions are updated



Forecast by Grade (3-year historic & 3-year forecast)

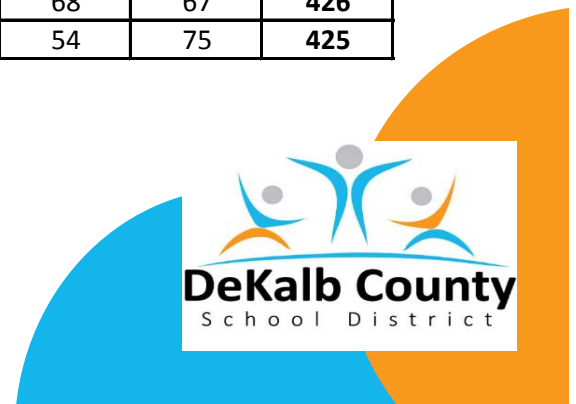
Fall	-2	-1	0	1	2	3	4	5	Total
2017	1	25	69	66	70	78	58	62	429
2018	0	26	59	72	63	68	68	65	421
2019	0	23	71	65	73	65	60	68	425
2020	0	23	66	76	60	74	59	68	426
2021	0	23	66	70	71	61	68	67	426
2022	0	23	66	68	66	73	54	75	425

Definitions:

All - All students residing in the attendance area

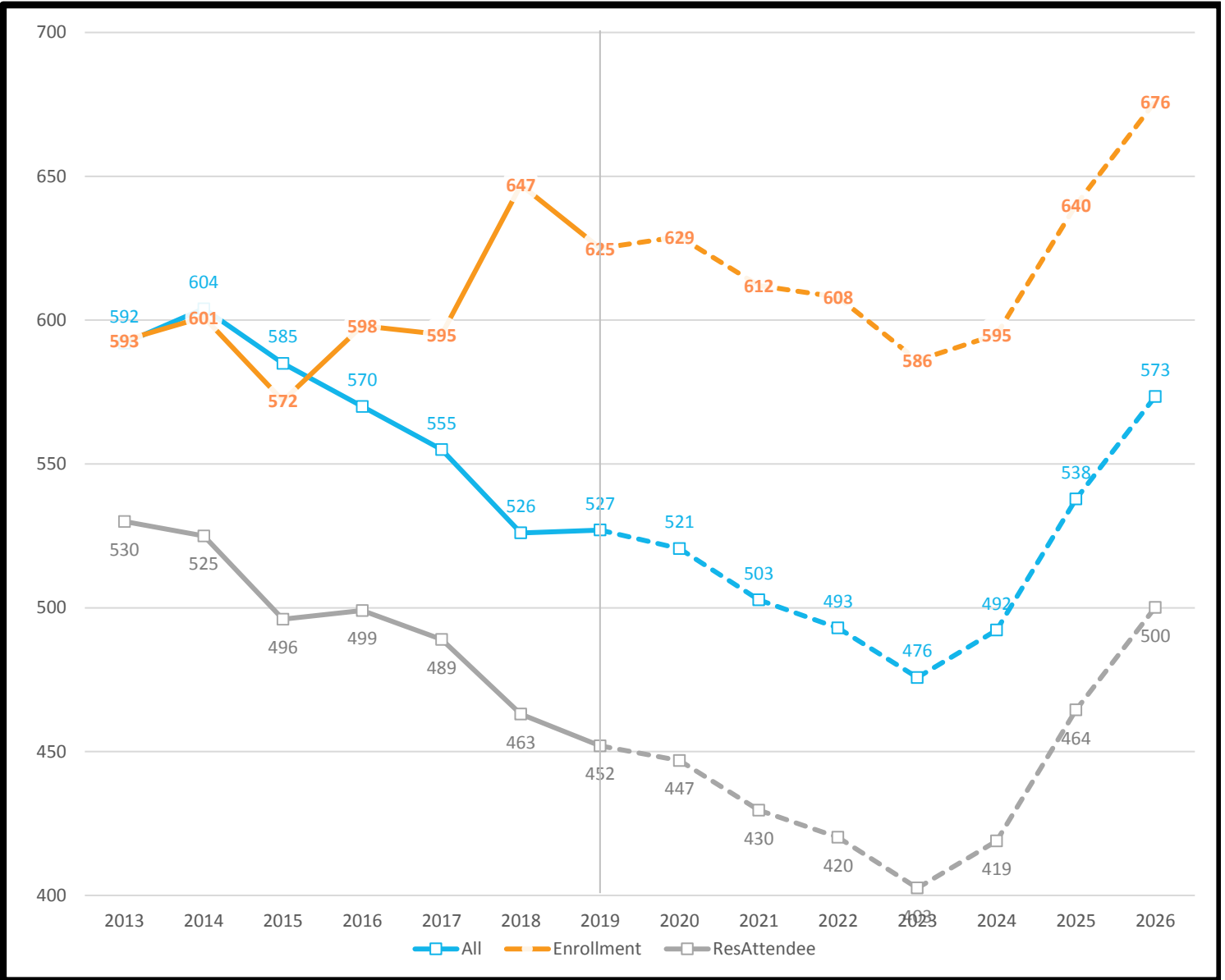
Enrollment - All students enrolled in the school, regardless of residence

ResAttendee - All students residing in the attendance area and enrolled in the school



Historic Enrollment (7-years) and Long-Term Forecast (7-years)

*All forecasts are estimates only and are subject to change as data and assumptions are updated



Forecast by Grade (3-year historic & 3-year forecast)

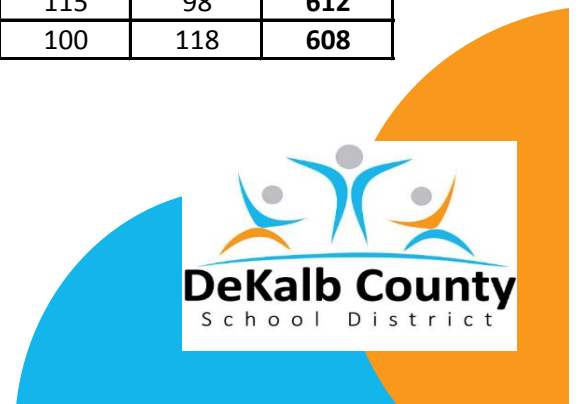
Fall	-2	-1	0	1	2	3	4	5	Total
2017	0	22	110	87	94	88	85	109	595
2018	0	23	110	128	103	109	89	85	647
2019	0	22	78	114	128	96	99	88	625
2020	0	22	95	81	114	121	93	103	629
2021	0	22	92	97	80	108	115	98	612
2022	0	22	106	93	96	73	100	118	608

Definitions:

All - All students residing in the attendance area

Enrollment - All students enrolled in the school, regardless of residence

ResAttendee - All students residing in the attendance area and enrolled in the school



Historic Enrollment (7-years) and Long-Term Forecast (7-years)

*All forecasts are estimates only and are subject to change as data and assumptions are updated



Forecast by Grade (3-year historic & 3-year forecast)

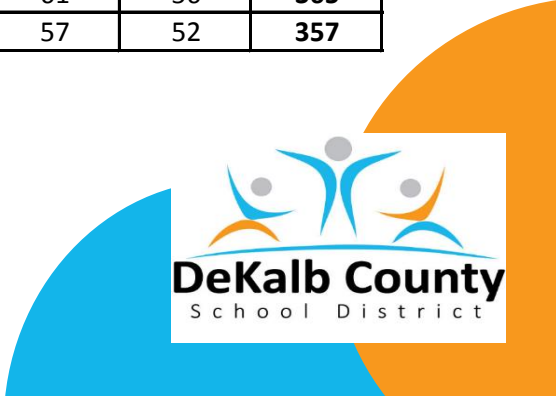
Fall	-2	-1	0	1	2	3	4	5	Total
2017	0	22	50	67	69	64	67	63	402
2018	0	22	45	66	73	59	52	64	381
2019	0	22	48	57	66	69	58	50	370
2020	0	22	48	55	63	64	66	50	368
2021	0	22	49	55	61	61	61	56	365
2022	0	22	50	56	61	59	57	52	357

Definitions:

All - All students residing in the attendance area

Enrollment - All students enrolled in the school, regardless of residence

ResAttendee - All students residing in the attendance area and enrolled in the school



Henderson Mill ES

11/12/2019

Historic Enrollment (7-years) and Long-Term Forecast (7-years)

*All forecasts are estimates only and are subject to change as data and assumptions are updated



Forecast by Grade (3-year historic & 3-year forecast)

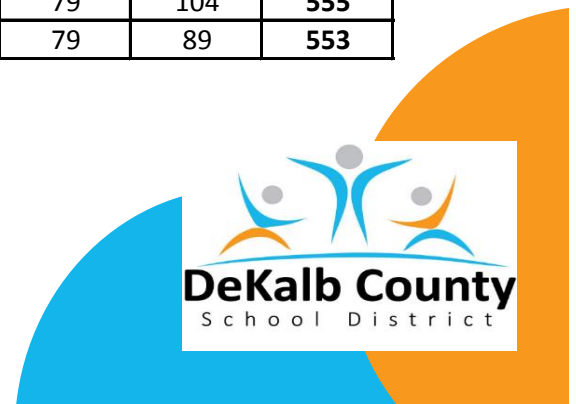
Fall	-2	-1	0	1	2	3	4	5	Total
2017	2	26	78	106	95	92	94	83	576
2018	0	25	75	70	103	92	90	98	553
2019	0	26	91	77	79	99	78	87	537
2020	0	26	79	93	77	86	92	89	542
2021	0	26	87	81	94	84	79	104	555
2022	0	26	97	86	77	99	79	89	553

Definitions:

All - All students residing in the attendance area

Enrollment - All students enrolled in the school, regardless of residence

ResAttendee - All students residing in the attendance area and enrolled in the school



Historic Enrollment (7-years) and Long-Term Forecast (7-years)

*All forecasts are estimates only and are subject to change as data and assumptions are updated



Forecast by Grade (3-year historic & 3-year forecast)

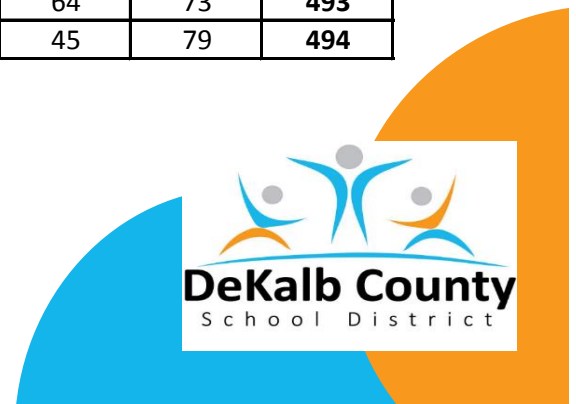
Fall	-2	-1	0	1	2	3	4	5	Total
2017	0	22	72	83	92	110	86	69	534
2018	0	44	57	90	75	88	88	78	520
2019	0	44	80	70	88	69	73	81	505
2020	0	44	63	101	69	75	58	87	497
2021	0	44	69	86	100	57	64	73	493
2022	0	44	62	92	84	88	45	79	494

Definitions:

All - All students residing in the attendance area

Enrollment - All students enrolled in the school, regardless of residence

ResAttendee - All students residing in the attendance area and enrolled in the school

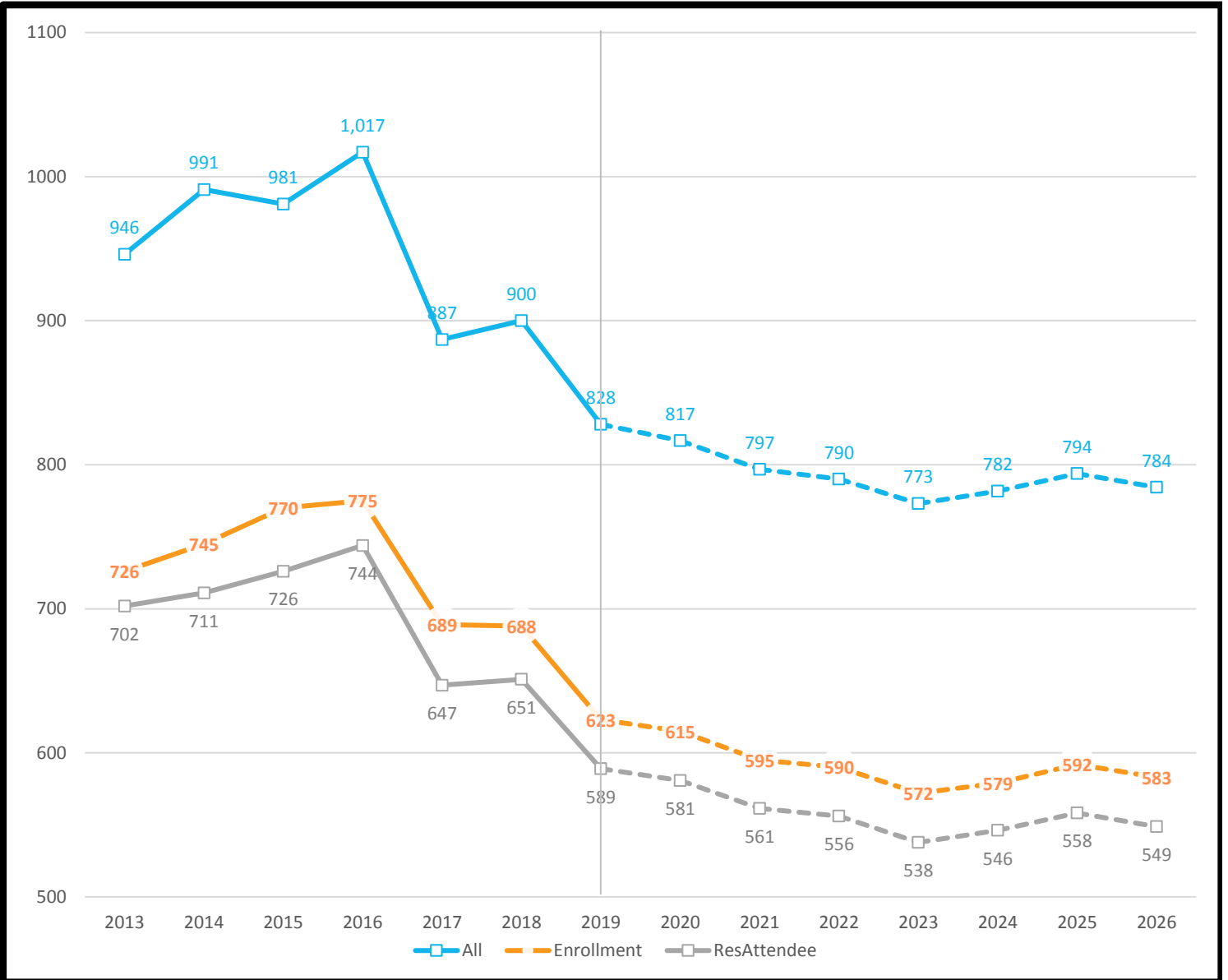


Pleasantdale ES

11/12/2019

Historic Enrollment (7-years) and Long-Term Forecast (7-years)

*All forecasts are estimates only and are subject to change as data and assumptions are updated



Forecast by Grade (3-year historic & 3-year forecast)

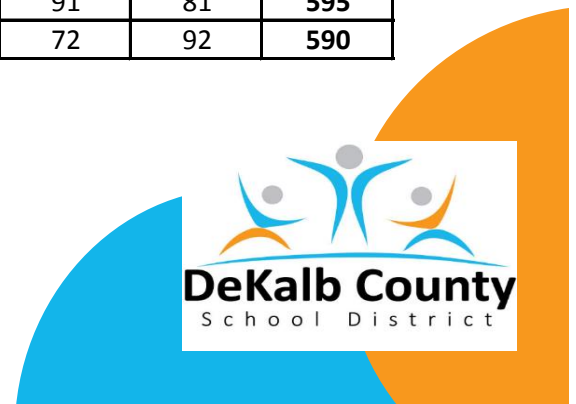
Fall	-2	-1	0	1	2	3	4	5	Total
2017	5	42	121	101	122	109	81	108	689
2018	0	54	117	112	98	109	115	83	688
2019	3	46	90	89	103	99	99	94	623
2020	3	46	122	77	81	105	86	95	615
2021	3	46	114	108	70	82	91	81	595
2022	3	46	106	104	99	68	72	92	590

Definitions:

All - All students residing in the attendance area

Enrollment - All students enrolled in the school, regardless of residence

ResAttendee - All students residing in the attendance area and enrolled in the school

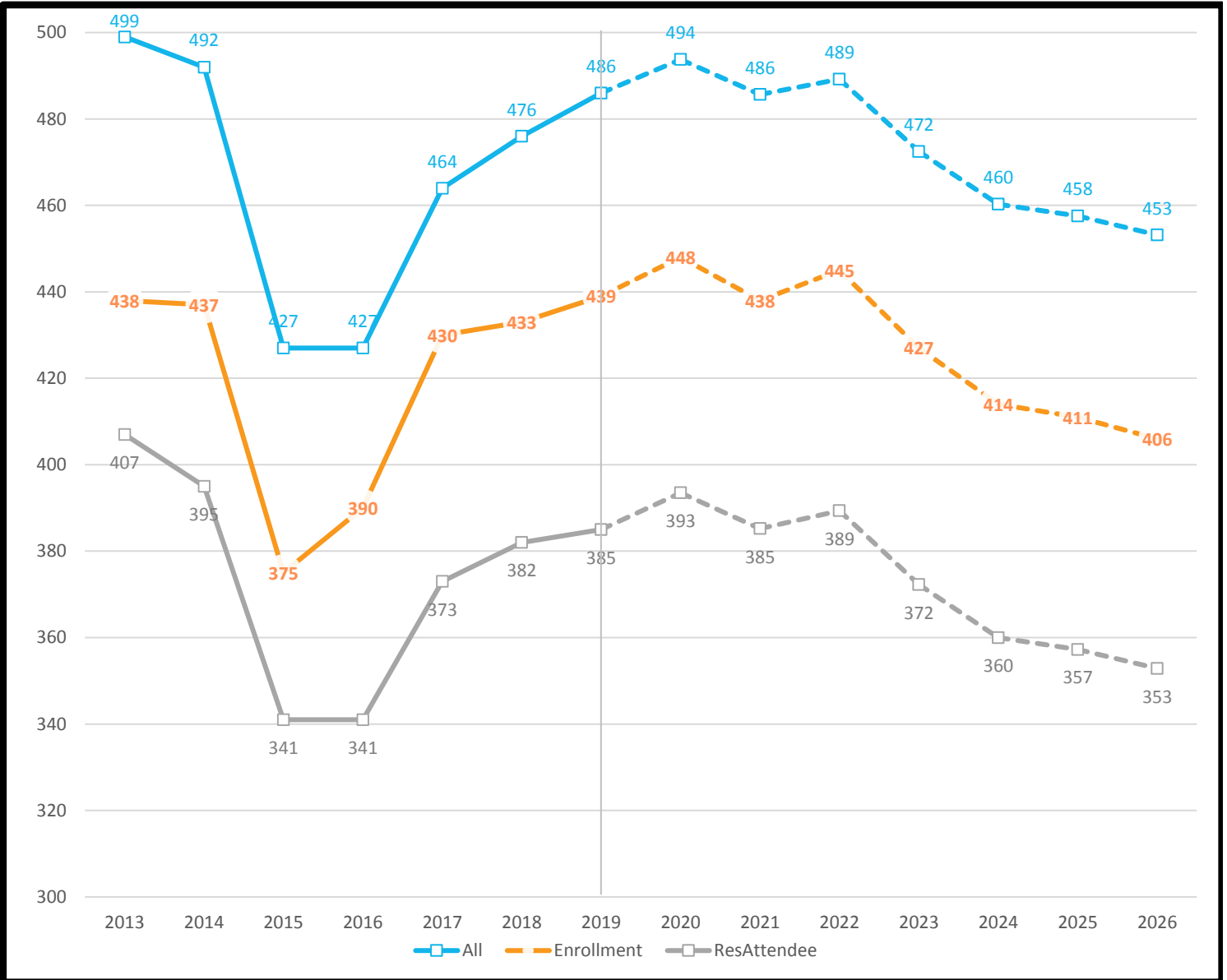


Sagamore Hills ES

11/12/2019

Historic Enrollment (7-years) and Long-Term Forecast (7-years)

*All forecasts are estimates only and are subject to change as data and assumptions are updated



Forecast by Grade (3-year historic & 3-year forecast)

Fall	-2	-1	0	1	2	3	4	5	Total
2017	3	26	67	76	69	67	65	57	430
2018	2	28	62	79	67	74	60	61	433
2019	2	32	66	79	72	62	70	56	439
2020	2	32	67	74	71	79	58	65	448
2021	2	32	58	74	66	78	75	53	438
2022	2	32	67	64	65	73	73	69	445

Definitions:

All - All students residing in the attendance area

Enrollment - All students enrolled in the school, regardless of residence

ResAttendee - All students residing in the attendance area and enrolled in the school

