



New 2021 Forecast for Austin Elementary School Redistricting

SCH	Name	Round 2 2021 Forecast	New 2021 Forecast	Difference	Note
118	Austin Elementary School	854	849	-5	
152	Chesnut Elementary School	483	466	-17	3-year average mobility rates are lower than the 2-year average. See note below*
180	Dunwoody Elementary School	1265	1245	-20	Used 4-year average mobility rate
218	Hightower Elementary School	716	714	-2	
236	Kingsley Elementary School	423	453	+30	Updated Kindergarten rate to a 1-year average birth-to-kindergarten ratio
484	Vanderlyn Elementary School	695	692	-3	

*Round 2 forecast used a default 2-year average in mobility rates and the New 2021 forecast uses a default 3 year forecast.

**New 2021 forecast corrected Kindergarten growth rate calculation error in Round 2 forecast that affected several elementary schools.

Historic Enrollment (7-years) and Long-Term Forecast (7-years)

*All forecasts are estimates only and are subject to change as data and assumptions are updated



Forecast by Grade (3-year historic & 3-year forecast)

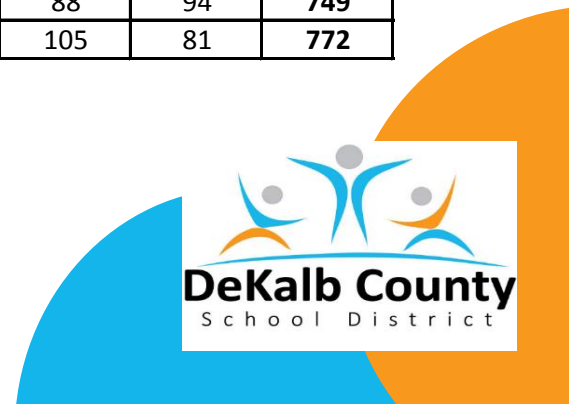
Fall	-2	-1	0	1	2	3	4	5	Total
2017	0	22	103	127	120	104	89	77	642
2018	0	22	133	109	124	120	97	83	688
2019	0	22	148	132	101	121	96	88	708
2020	0	22	144	145	120	103	105	86	725
2021	0	22	149	142	133	121	88	94	749
2022	0	22	154	148	128	134	105	81	772

Definitions:

All - All students residing in the attendance area

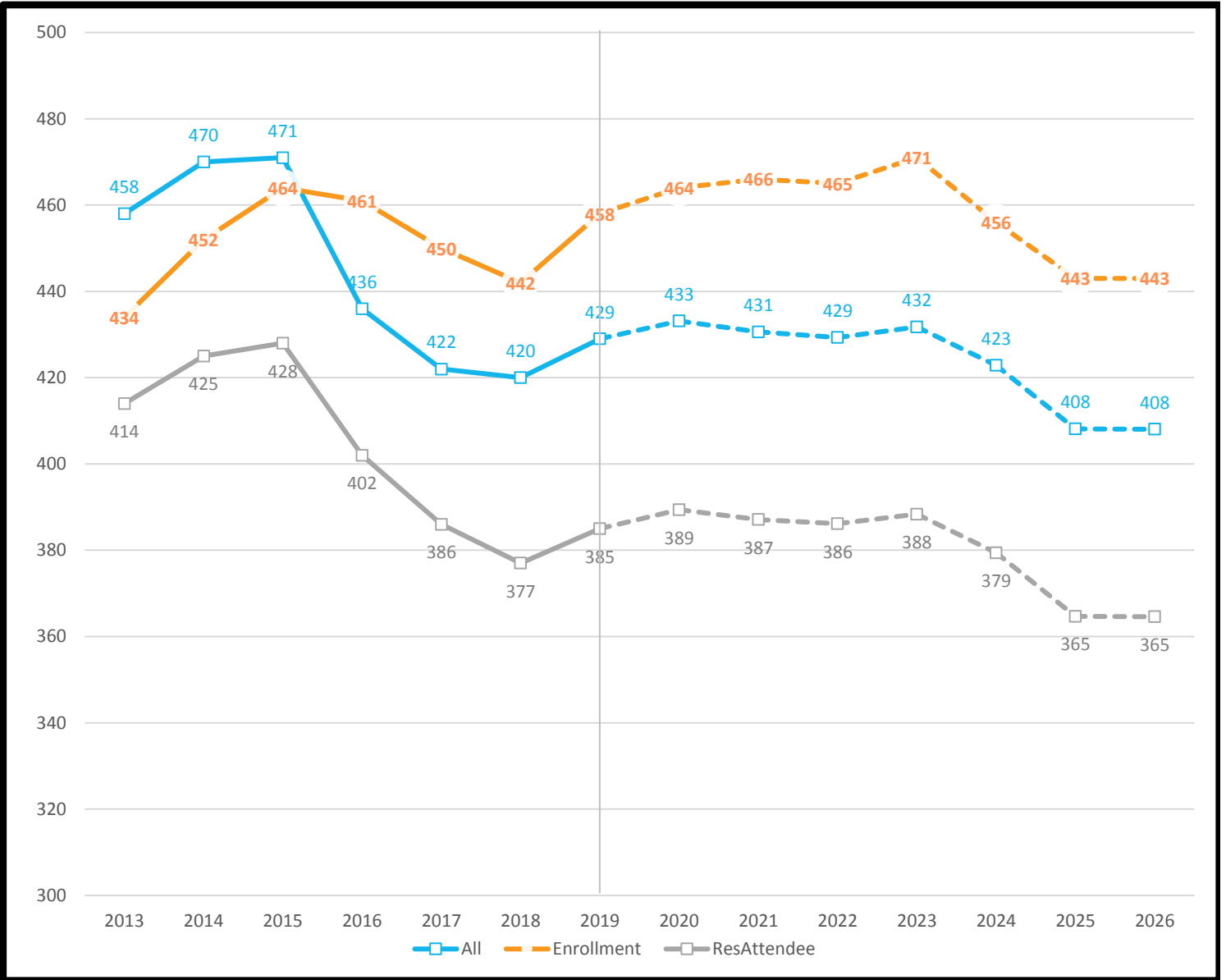
Enrollment - All students enrolled in the school, regardless of residence

ResAttendee - All students residing in the attendance area and enrolled in the school



Historic Enrollment (7-years) and Long-Term Forecast (7-years)

*All forecasts are estimates only and are subject to change as data and assumptions are updated



Forecast by Grade (3-year historic & 3-year forecast)

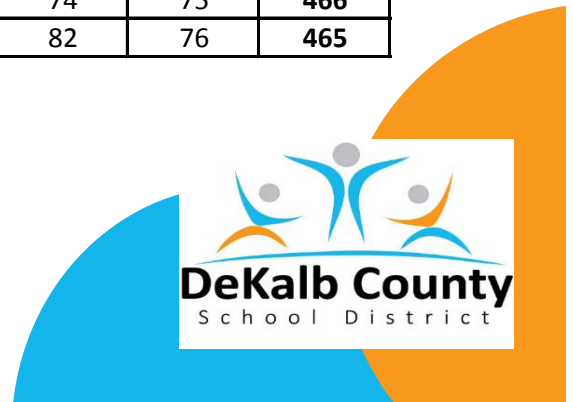
Fall	-2	-1	0	1	2	3	4	5	Total
2017	0	22	65	75	70	79	70	69	450
2018	0	22	68	64	65	72	70	81	442
2019	0	22	78	75	72	70	72	69	458
2020	0	22	64	79	80	72	71	76	464
2021	0	22	64	68	83	80	74	75	466
2022	0	22	64	67	73	81	82	76	465

Definitions:

All - All students residing in the attendance area

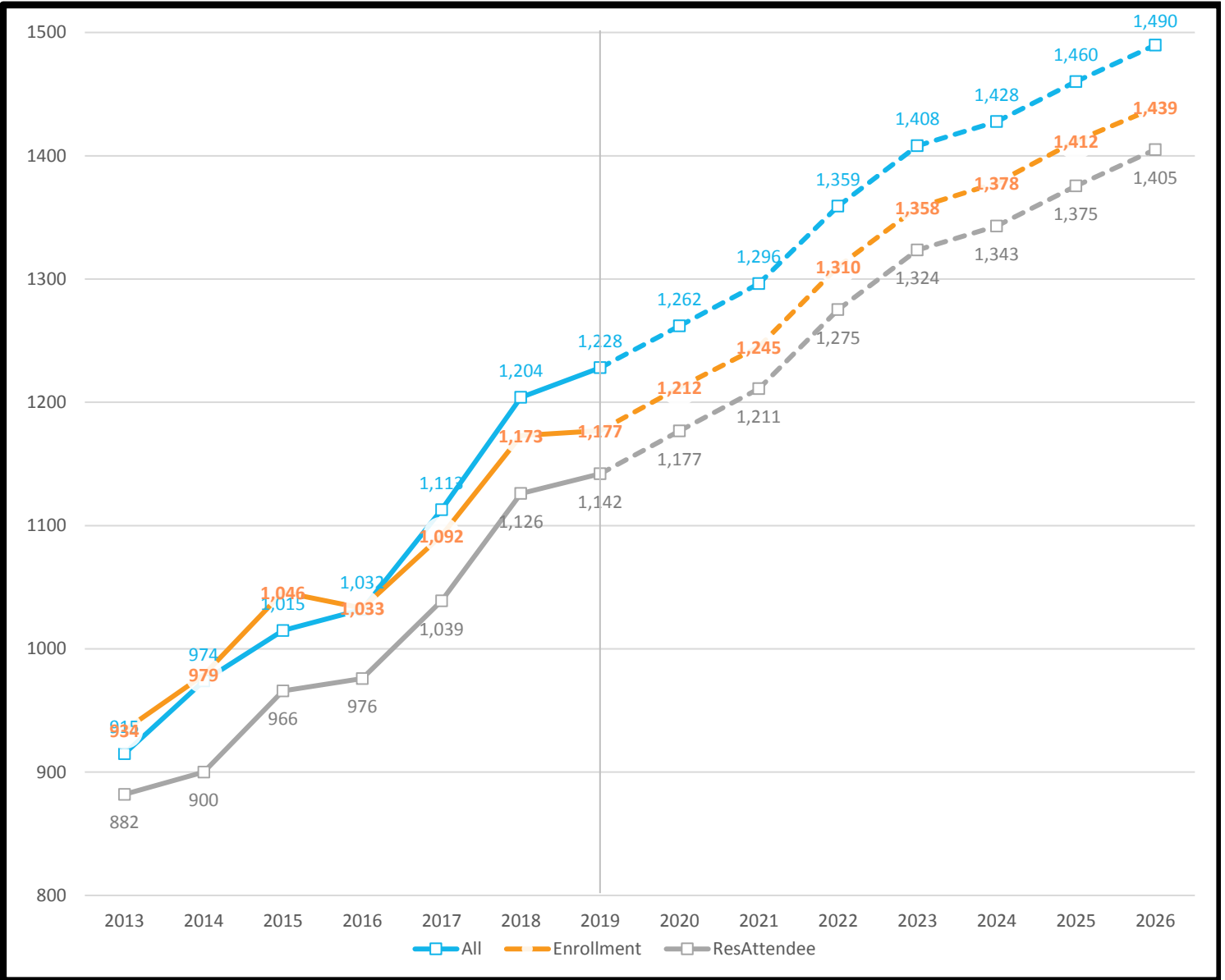
Enrollment - All students enrolled in the school, regardless of residence

ResAttendee - All students residing in the attendance area and enrolled in the school



Historic Enrollment (7-years) and Long-Term Forecast (7-years)

*All forecasts are estimates only and are subject to change as data and assumptions are updated



Forecast by Grade (3-year historic & 3-year forecast)

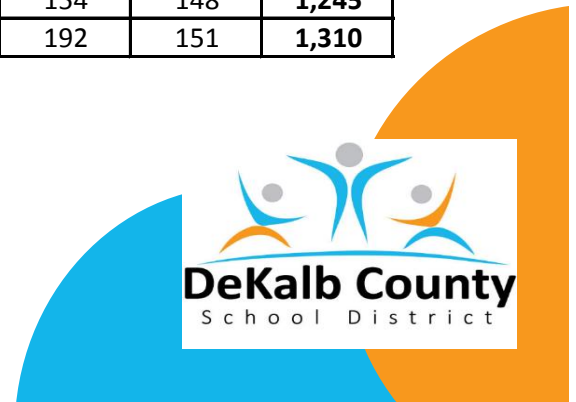
Fall	-2	-1	0	1	2	3	4	5	Total
2017	0	55	172	205	199	179	143	139	1,092
2018	0	52	230	194	201	201	152	143	1,173
2019	0	40	214	222	190	181	178	152	1,177
2020	0	40	224	207	232	182	153	174	1,212
2021	0	40	247	217	217	222	154	148	1,245
2022	0	40	246	242	229	210	192	151	1,310

Definitions:

All - All students residing in the attendance area

Enrollment - All students enrolled in the school, regardless of residence

ResAttendee - All students residing in the attendance area and enrolled in the school

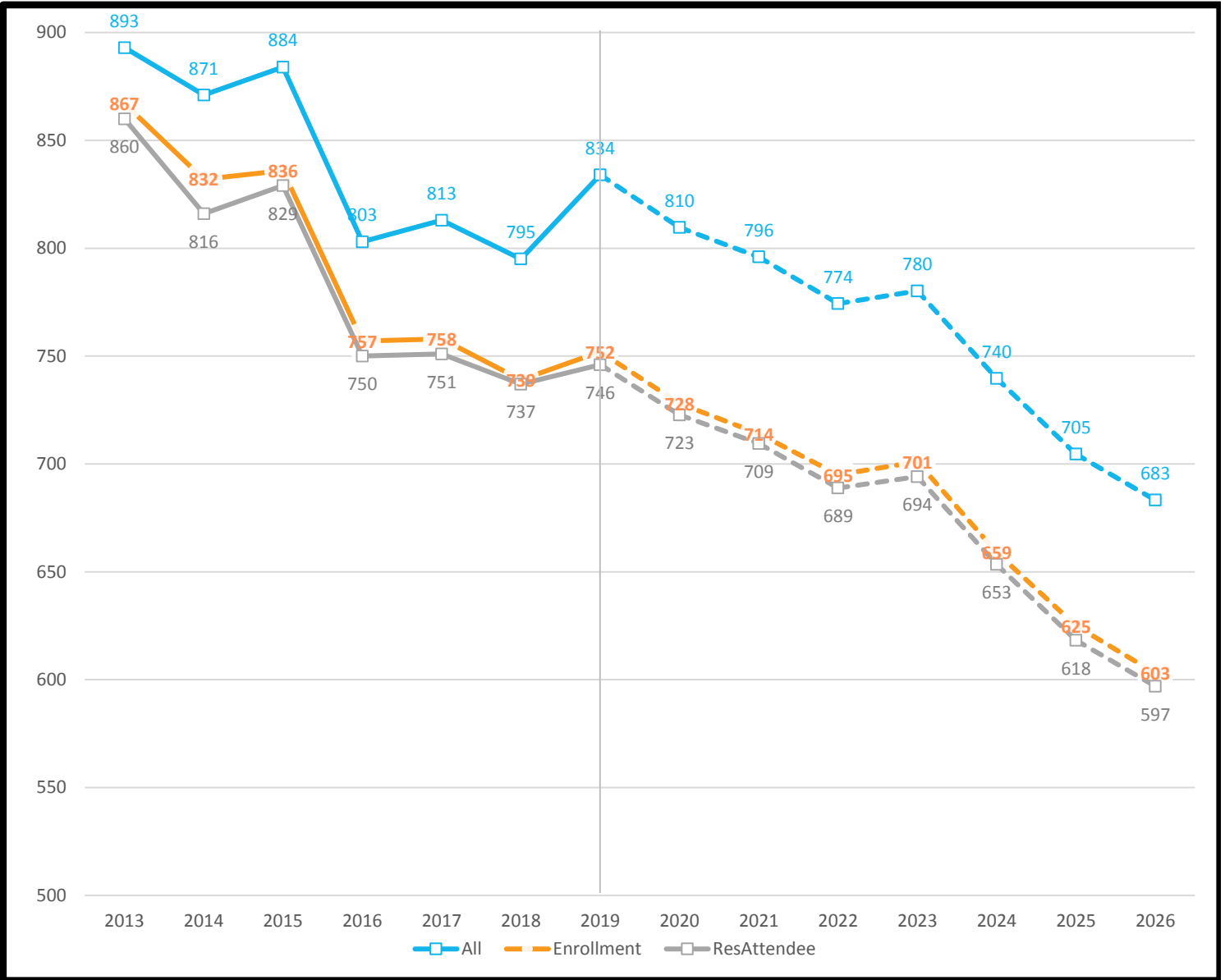


Hightower ES

11/12/2019

Historic Enrollment (7-years) and Long-Term Forecast (7-years)

*All forecasts are estimates only and are subject to change as data and assumptions are updated



Forecast by Grade (3-year historic & 3-year forecast)

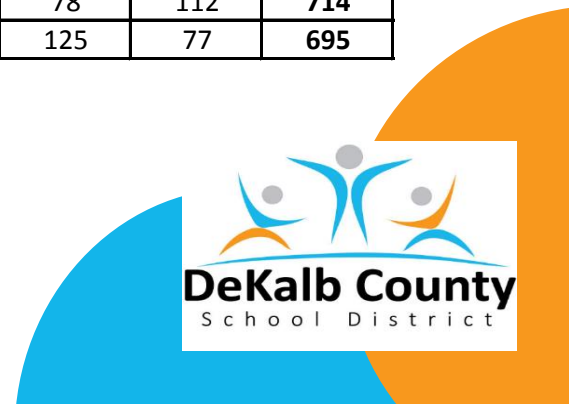
Fall	-2	-1	0	1	2	3	4	5	Total
2017	0	22	98	122	118	128	138	132	758
2018	0	22	129	91	128	119	121	129	739
2019	0	22	139	144	92	128	113	114	752
2020	0	22	116	140	137	87	119	107	728
2021	0	22	120	117	133	132	78	112	714
2022	0	22	105	123	113	130	125	77	695

Definitions:

All - All students residing in the attendance area

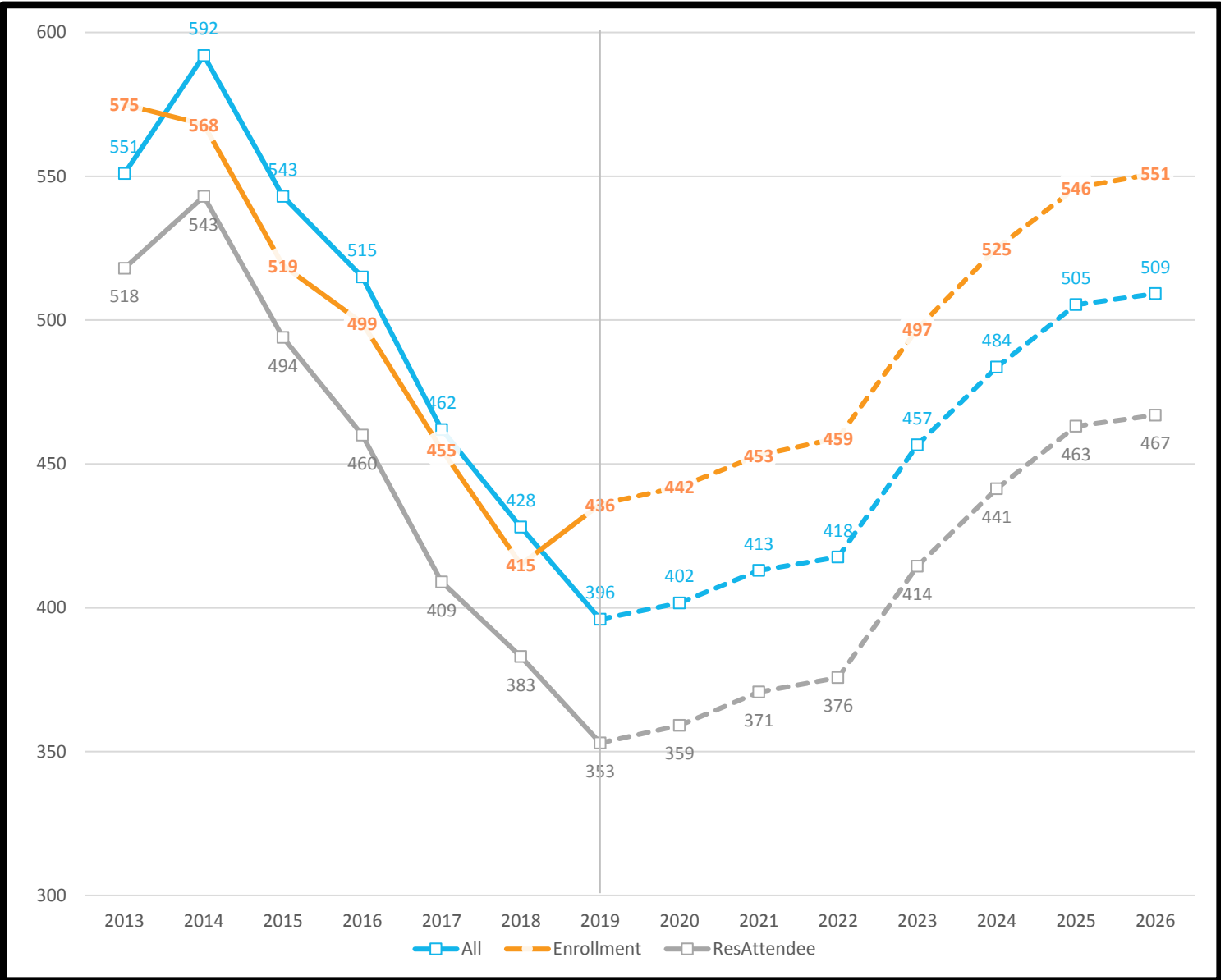
Enrollment - All students enrolled in the school, regardless of residence

ResAttendee - All students residing in the attendance area and enrolled in the school



Historic Enrollment (7-years) and Long-Term Forecast (7-years)

*All forecasts are estimates only and are subject to change as data and assumptions are updated



Forecast by Grade (3-year historic & 3-year forecast)

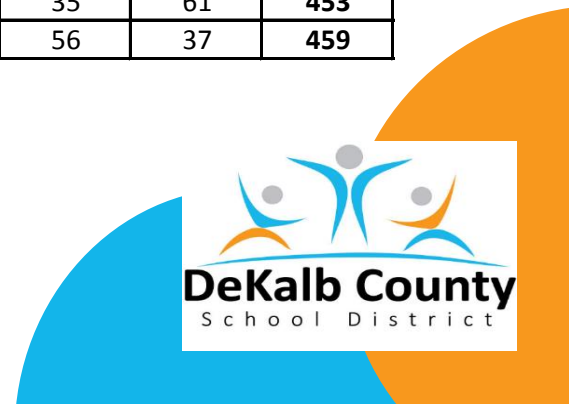
Fall	-2	-1	0	1	2	3	4	5	Total
2017	11	29	56	60	77	74	71	77	455
2018	4	32	64	46	61	72	67	69	415
2019	8	33	78	72	50	58	68	69	436
2020	8	33	98	69	73	31	60	70	442
2021	8	33	102	90	70	54	35	61	453
2022	8	33	88	93	92	52	56	37	459

Definitions:

All - All students residing in the attendance area

Enrollment - All students enrolled in the school, regardless of residence

ResAttendee - All students residing in the attendance area and enrolled in the school



Historic Enrollment (7-years) and Long-Term Forecast (7-years)

*All forecasts are estimates only and are subject to change as data and assumptions are updated



Forecast by Grade (3-year historic & 3-year forecast)

Fall	-2	-1	0	1	2	3	4	5	Total
2017	0	22	107	132	130	112	93	109	705
2018	0	22	105	114	128	119	93	87	668
2019	0	22	106	120	124	129	104	90	695
2020	0	22	115	117	122	117	114	90	697
2021	0	22	106	127	118	115	104	100	692
2022	0	22	88	118	126	110	104	93	661

Definitions:

All - All students residing in the attendance area

Enrollment - All students enrolled in the school, regardless of residence

ResAttendee - All students residing in the attendance area and enrolled in the school

