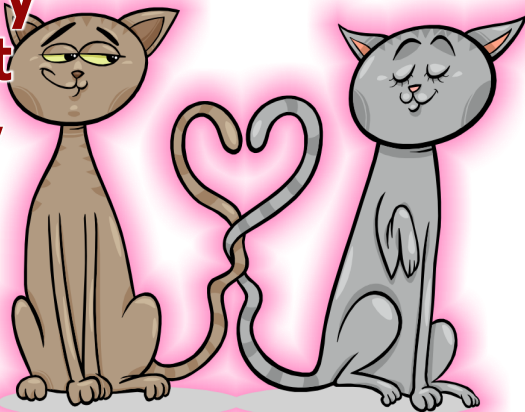


Elementary Breakfast February 2020

**DeKalb County
School District**



This institution is an equal opportunity provider. Menus are subject to change.

YOU'VE GOT TO LOVE IT!

You've got to love your heart, that is! And taking care of your heart is a job that lasts your whole lifetime. Eat more fruits, veggies, and whole grains and less salt and saturated fat. And exercise regularly like your healthy heart depends on it – because it does!



**EAT BETTER. PLAY HARDER. LIVE HEALTHIER. LEARN EASIER.
WELLNESS IS A WAY OF LIFE!**

Monday, February 3

Great Beginnings

Go Big Strawberry Yogurt with
Homemade Blueberry Muffin Bread V

Choice of Cereal with Blueberry Muffin
Bread

Fruity Delights (1-2):

Apple Juice
Seasonal Fresh Fruit

Tuesday, February 4

Great Beginnings

Chicken & Waffle

Cinnamon Toast Crunch Pastry

Fruity Delights (1-2):

Strawberry Kiwi Juice
Sliced Peaches

Wednesday, February 5

Great Beginnings

Paradise Parfait

Cereal Choice with Homemade
Blueberry Muffin Bread

Fruity Delights (1-2):

White Grape Juice
Chilled Pears

Thursday, February 6

Great Beginnings

Cheesy Scrambled Eggs with Toast

Choice of Cereal with Toast

Fruity Delights (1-2):

Orange Tangerine Juice
Bananas

Friday, February 7

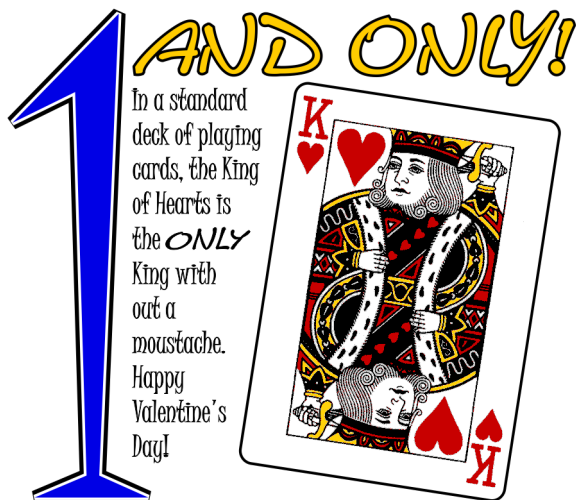
Great Beginnings

Pancake N' Link

Toasted Croissant with Jelly

Fruity Delights (1-2):

Assorted Juice
Applesauce



Monday, February 10

Great Beginnings

Country Chicken Biscuit

Choice of Cereal with Toast

Fruity Delights (1-2):

Apple Juice
Seasonal Fresh Fruit

Tuesday, February 11

Great Beginnings

Breakfast Pizza

Toasted Croissant with Jelly

Fruity Delights (1-2):

Fruit Punch Juice
Sliced Peaches

Wednesday, February 12

Great Beginnings

Peaches N Cream Parfait

Turkey Sausage Biscuit

With: Southern Grits

Fruity Delights (1-2):

White Grape Juice
Chilled Pears

Thursday, February 13

Great Beginnings

Maple French Toast Sticks

Assorted Cereal with Homemade
Blueberry Muffin Bread

Fruity Delights (1-2):

Orange Tangerine Juice
Bananas

Friday, February 14

Great Beginnings

Scrambled Eggs With Turkey Bacon &
Toast

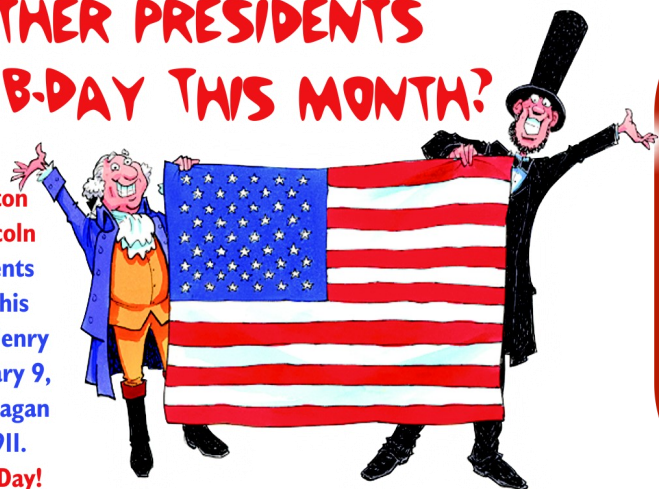
Assorted Cereal with Toast V

Fruity Delights (1-2):

Assorted Juice
Applesauce

WHAT OTHER PRESIDENTS HAVE A B-DAY THIS MONTH?

Other than
George Washington
and Abraham Lincoln
two other Presidents
have a birthday this
month – William Henry
Harrison on February 9,
1773 and Ronald Reagan
on February 6, 1911.
Happy Presidents Day!



Monday, February 17



**NO SCHOOL
TODAY**

Tuesday, February 18

Great Beginnings

Chicken & Waffle

Cinnamon Toast Crunch Pastry

Fruity Delights (1-2):

Strawberry Kiwi Juice
Sliced Peaches

Wednesday, February 19

Great Beginnings

Paradise Parfait

Cereal Choice with Homemade Blue-
berry Muffin Bread

Fruity Delights (1-2):

White Grape Juice
Chilled Pears

Thursday, February 20

Great Beginnings

Cheesy Scrambled Eggs with Toast

Choice of Cereal with Toast

Fruity Delights (1-2):

Orange Tangerine Juice
Bananas

Friday, February 21

Great Beginnings

Pancake N Link

Toasted Croissant with Jelly

Fruity Delights (1-2):

Assorted Juice
Applesauce

**BREAKFAST
@SCHOOL**
For first-class learning!

Featuring Healthy
Fruits & Grains!

Monday, February 24

Great Beginnings

Country Chicken Biscuit

Choice of Cereal with Toast

Fruity Delights (1-2):

Apple Juice
Seasonal Fresh Fruit

Tuesday, February 25

Great Beginnings

Breakfast Pizza

Toasted Croissant with Jelly

Fruity Delights (1-2):

Fruit Punch Juice
Sliced Peaches

Wednesday, February 26

Great Beginnings

Peaches N Cream Parfait

Turkey Sausage Biscuit

With: Southern Grits

Fruity Delights (1-2):

White Grape Juice
Chilled Pears

Thursday, February 27

Great Beginnings

Maple French Toast Sticks

Assorted Cereal with Homemade
Blueberry Muffin Bread

Fruity Delights (1-2):

Orange Tangerine Juice
Fresh Grapefruit

***Harvest of the Month**

Friday, February 28

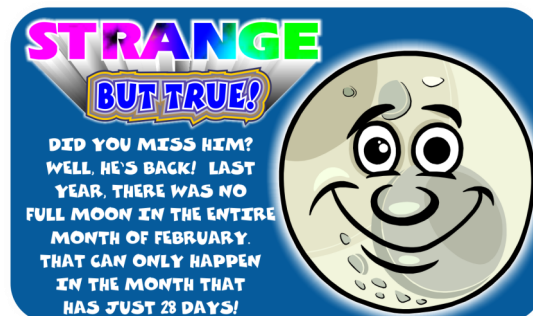
Great Beginnings

Scrambled Eggs With Turkey Bacon &
Toast

Assorted Cereal with Toast V

Fruity Delights (1-2):

Assorted Juice
Applesauce



Choice of milk served with all meals