

MAP Growth Quick Start Parent Guide

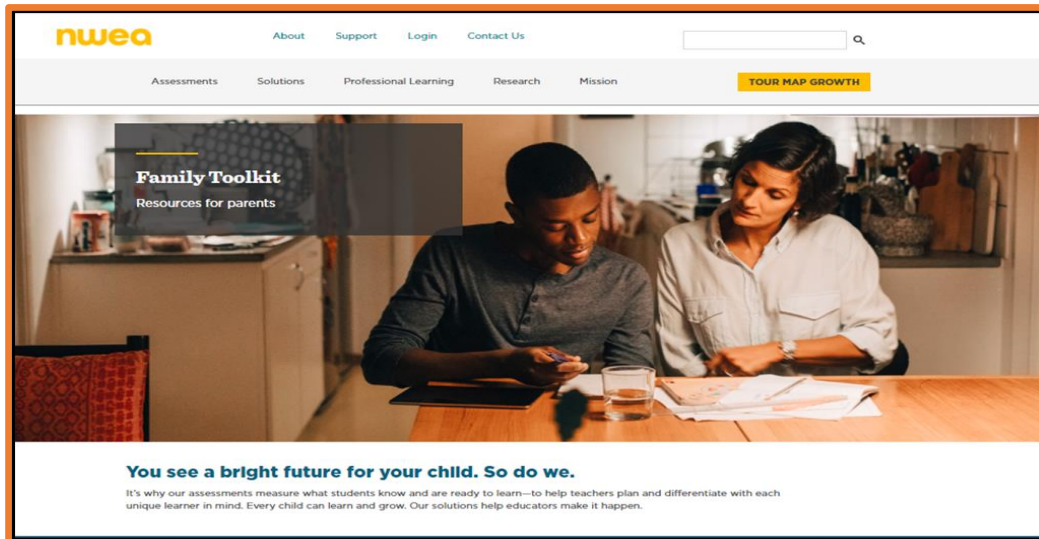
Purpose: The purpose of this guide is to assist parents with navigating through the NWEA Family Toolkit.

In the DeKalb County School District NWEA MAP Growth assessments are administered in the Fall, Winter and Spring semester of each school year. Students will be administered the MAP Growth tests based on grade levels as described in the chart in the chart below.

Student Groups	Test Name
Kindergarten, 1 st grade students, and 2 nd grade students	Growth: Reading K-2 Growth: Math K-2
3 rd -5 th grade students	Growth: Reading 2-5 Growth: Math 2-5 Growth: Language 2-12 Growth: Science 3-5
6 th -8 th grade students	Growth: Reading 6+ Growth: Math 6+ Growth: Language 2-12 Growth: Science 6+
9 th and 10 th grade students	Growth: Reading 6+ Growth: Math 6+ Growth: Language 2-12

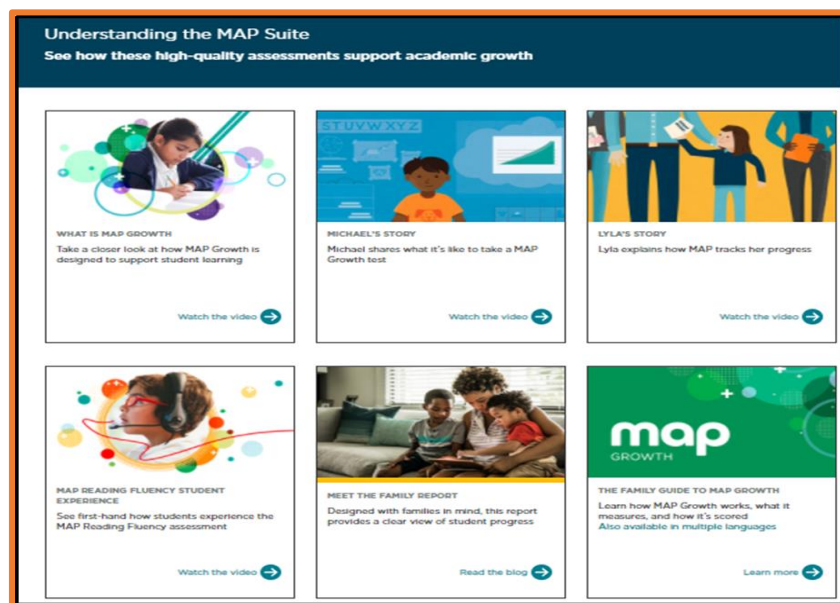
NWEA has provided parents with a Tool Kit that provides information on the MAP Growth Assessment

Step 1) Enter <https://www.nwea.org/the-map-suite/family-toolkit/> into your preferred browser. The Tool Kit resource page has 3 components: **Understanding the MAP Suite**, **Preparing for testing at home**, and **Supporting your learner**.




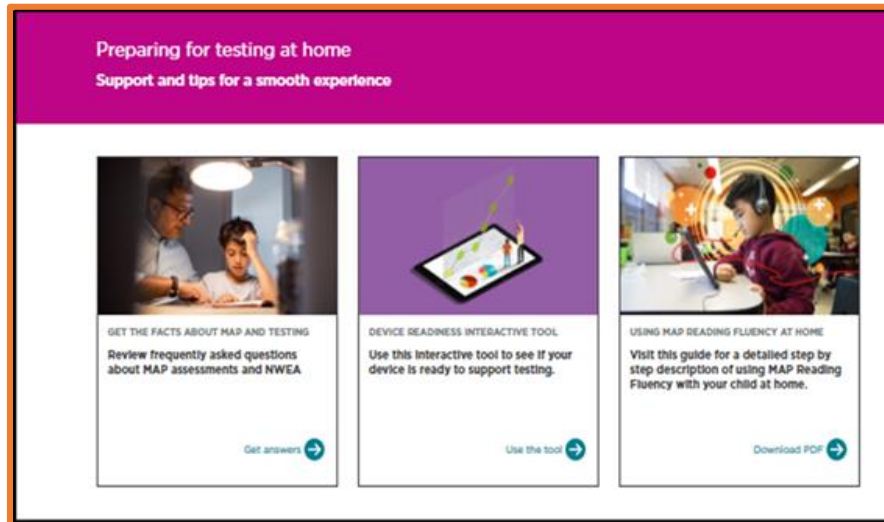
“Understanding the MAP Suite” explains how the MAP Growth assessment supports academic growth.

Step 2) Scroll down to the **Understanding the MAP Suite**. Click on each  to watch videos. You may also read the **Family Guide** (PDF).




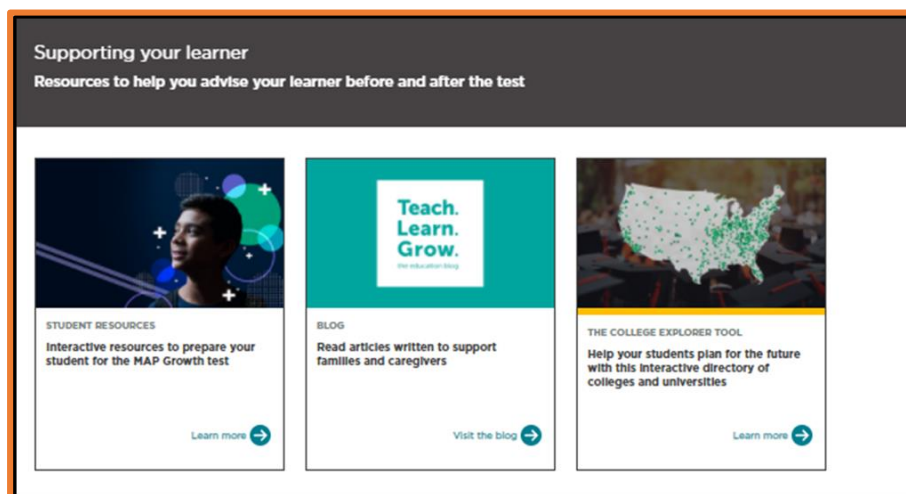
“Preparing for testing at home” provides support and tips for a smooth experience.

Step 3) Scroll down to **Preparing for testing at home**. Click on each  to view the **Frequently Asked Questions (FAQs)**, explore the **device readiness tool**, and to review the **MAP Reading Fluency Guide (PDF)**.



“Supporting your learner” provides resources to help you advise your learner before and after the test.

Step 4) Scroll down to **Supporting your learner**. Click each  to explore the interactive tools to assist your learner before and after the MAP Growth test.



*****If you have further questions, please contact your child’s School Test Coordinator*****