



IDLEWOOD ELEMENTARY
BOUNDARY ADJUSTMENT
SMOKE RISE ES RESOURCE PLANNING

COMMUNITY INFORMATION MEETING
JANUARY 23, 2025
SMOKE RISE ES

AGENDA

- 1. Background & Situation**
- 2. Redistricting Process**
- 3. Recommendation**
- 4. Resource Planning**

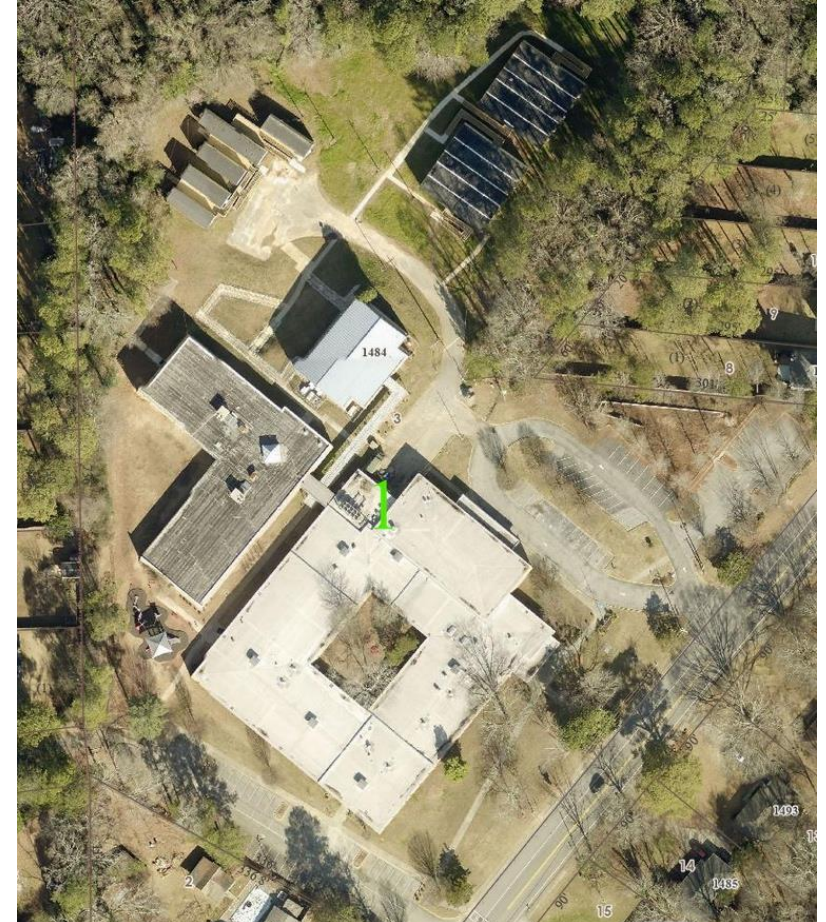


IDLEWOOD RENOVATION

- Scope
 - Renovations to kitchen, bathrooms, and more
 - HVAC Replacement

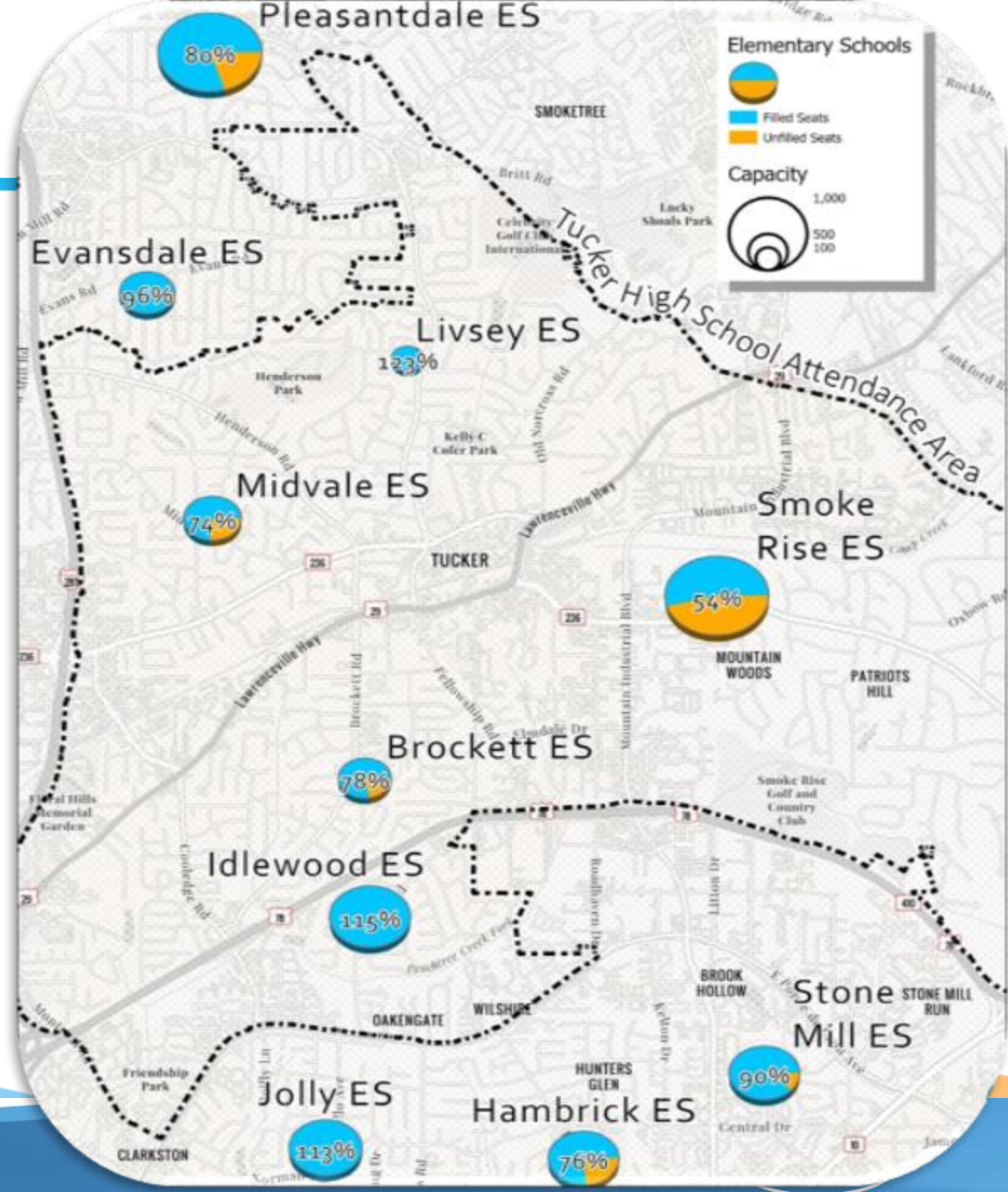
- Timeline
 - Starting in 2025
 - Complete in 2027

- ❖ A smaller student population at Idlewood will help make the project a success

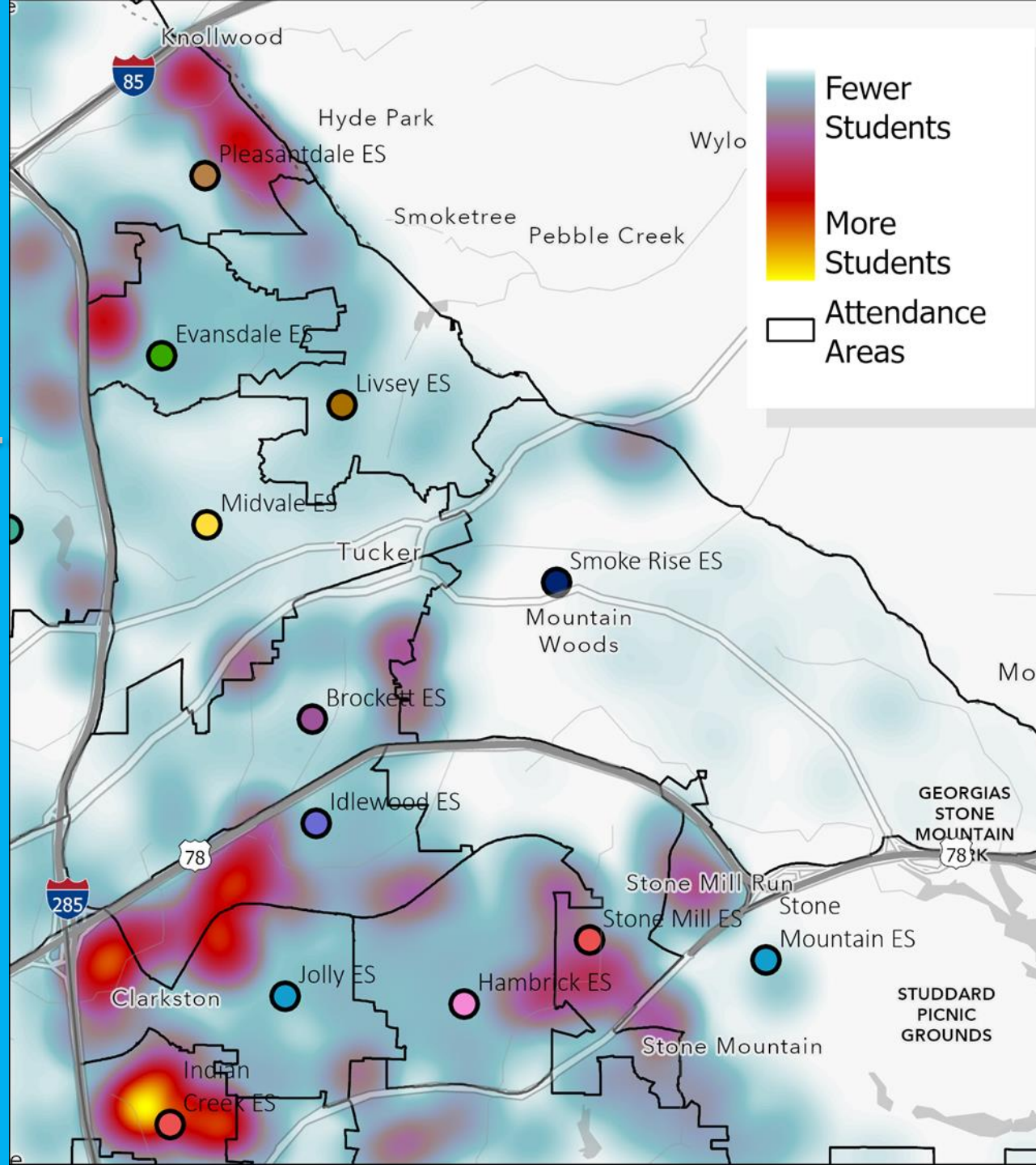


ELEMENTARY SCHOOLS

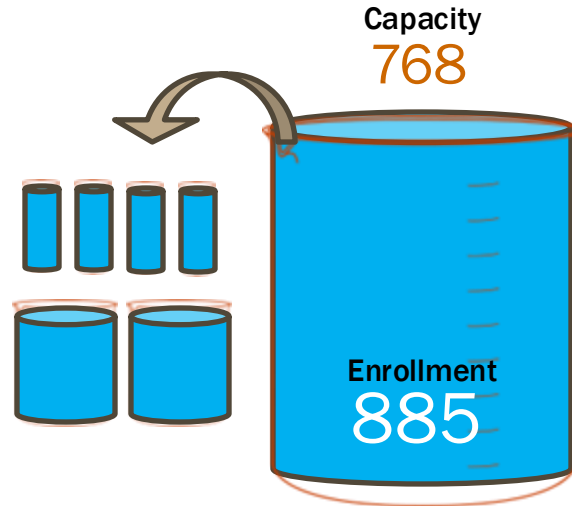
	Enr	Cap	Diff
Brockett ES	390	504	+114
Idlewood ES	885	768	-117
Livsey ES	383	312	-71
Midvale ES	411	552	+141
Smoke Rise ES	537	984	+447



WHERE DO OUR FAMILIES LIVE?



IDLEWOOD ELEMENTARY (1967)



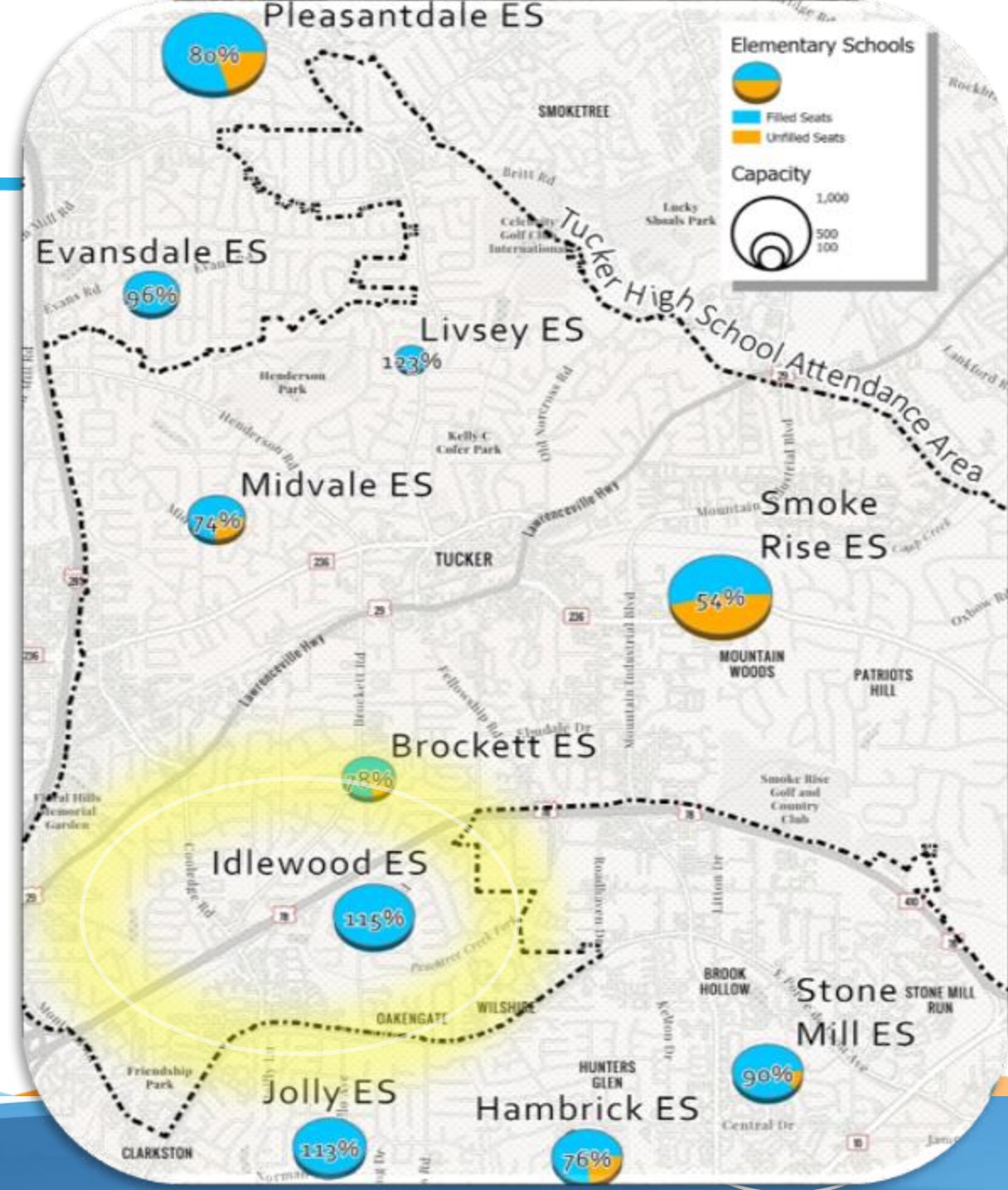
Renovation

Project Schedule:

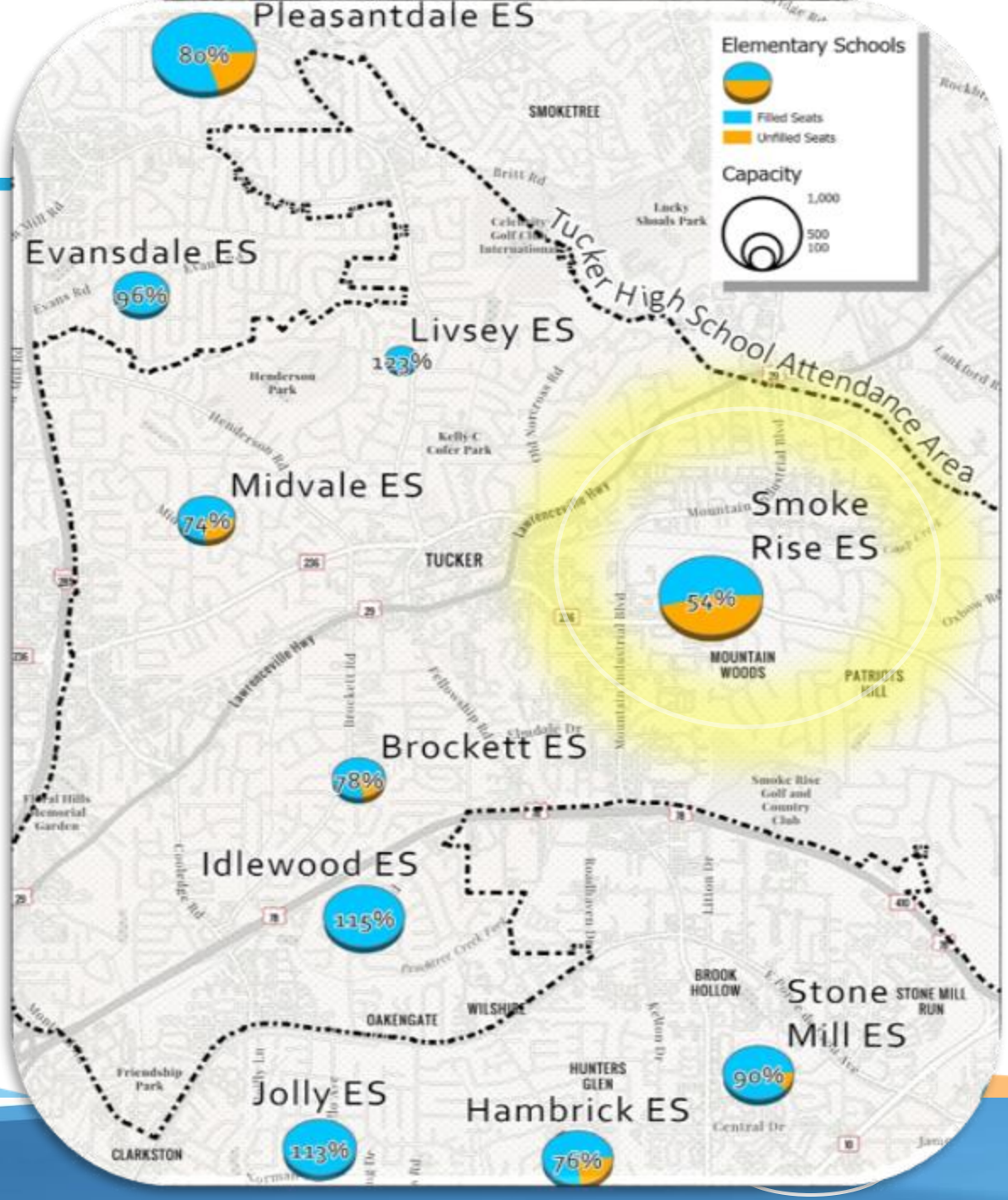
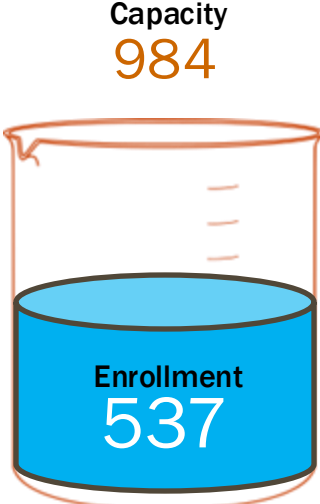
Planning	September-2023
Design Procurement	February-2024
CMAR Procurement	February-2024
Design/Permitting	March-2025
Construction	August-2027

Completion Date:

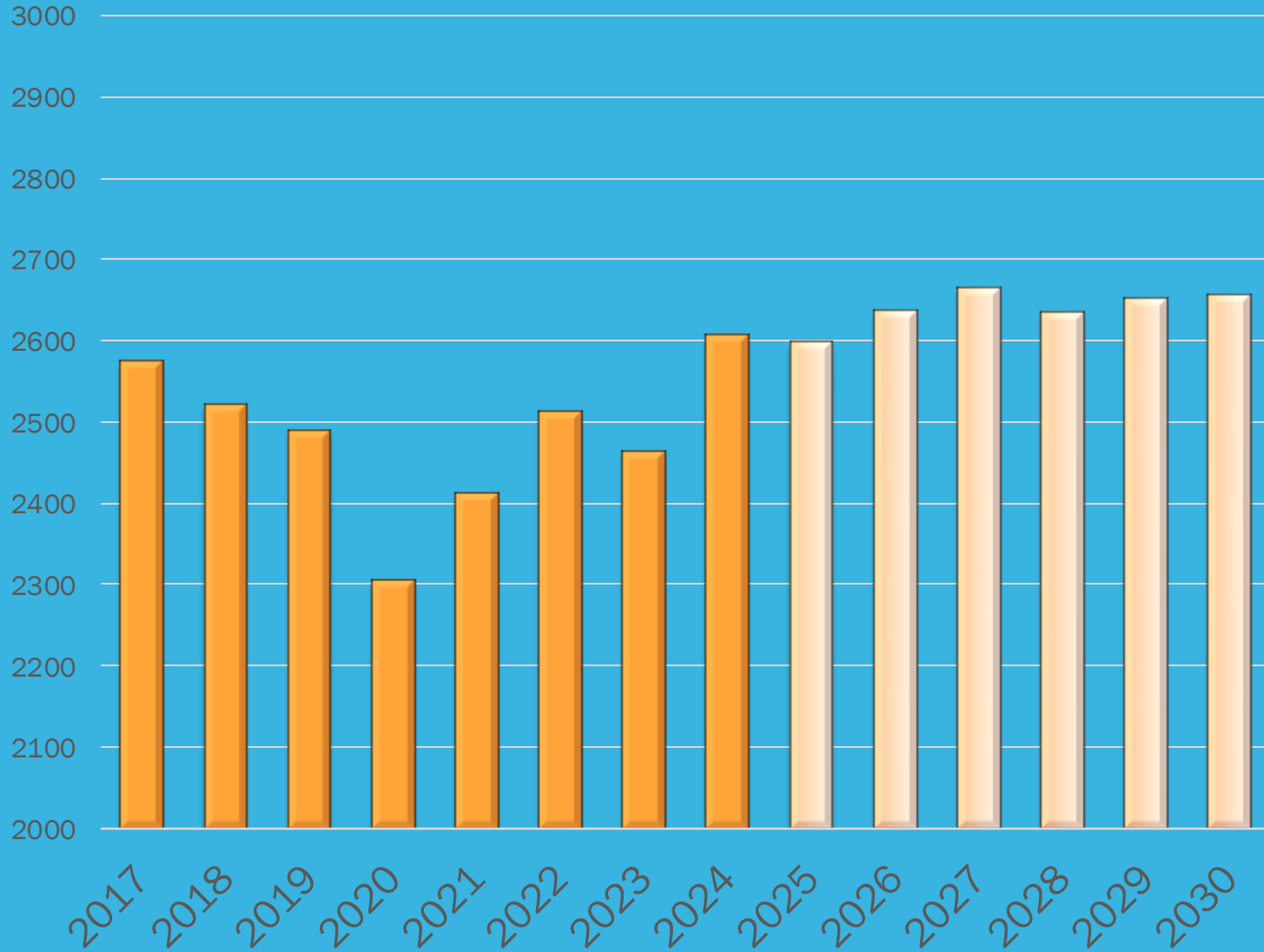
September-2023
February-2024
February-2024
March-2025
August-2027



SMOKE RISE ELEMENTARY (2021)

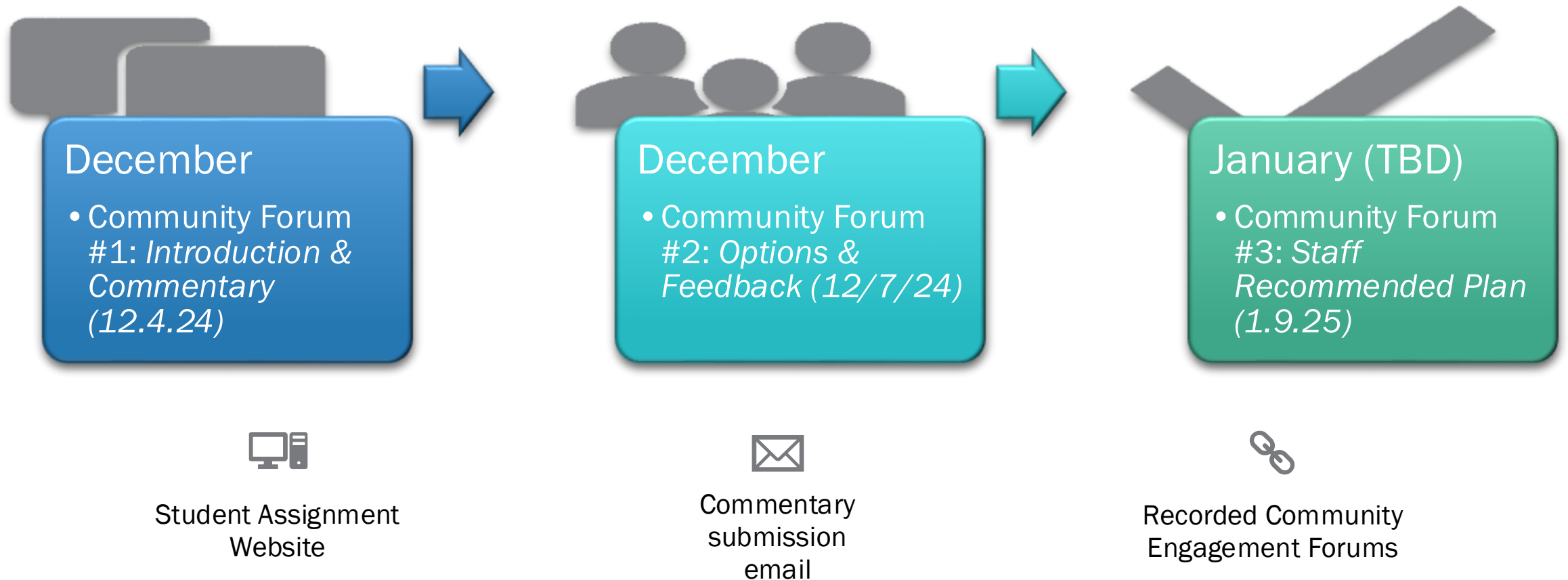


Tucker Cluster, Elementary Enrollment



Enrollment Forecast

ATTENDANCE BOUNDARY REVIEW: PROCESS



ATTENDANCE BOUNDARY REVIEW: *GUIDING PRINCIPLES*

Prioritize	Prioritize equitable access to high-quality instruction for all children.
Evaluate	Evaluate through a District-wide perspective by considering individual school capacities and student population projections to alleviate overcrowded schools and balance enrollment for now and the future.
Minimize	Minimize disruption to the greatest number of students.
Comply	Comply with Board Policy: AD – School Attendance Zones and associated state and federal regulations

FEEDBACK FRAMEWORK: CRITERIA

Primary Criteria

1. **Geographic Proximity**
2. **Instructional Capacity**
3. **Projected Enrollment**

• During the forum, community members will review the school board's redistricting criteria and can comment on residential development, traffic, previous redistricting, special programs, and other issues relevant to the criteria used for redrawing attendance lines.

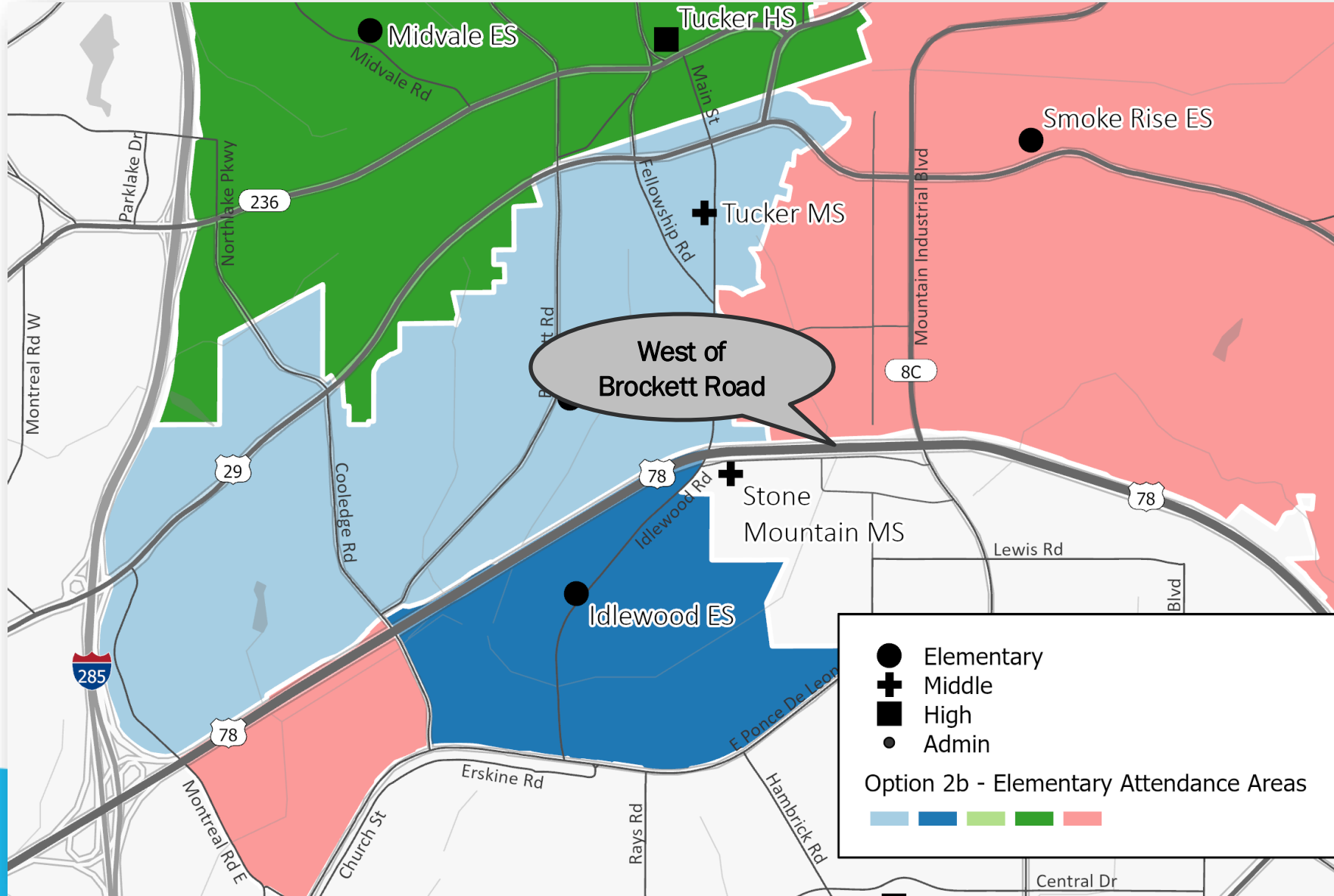
Secondary Criteria

When primary criteria indicate more than one option, options are evaluated based on, but not limited to:

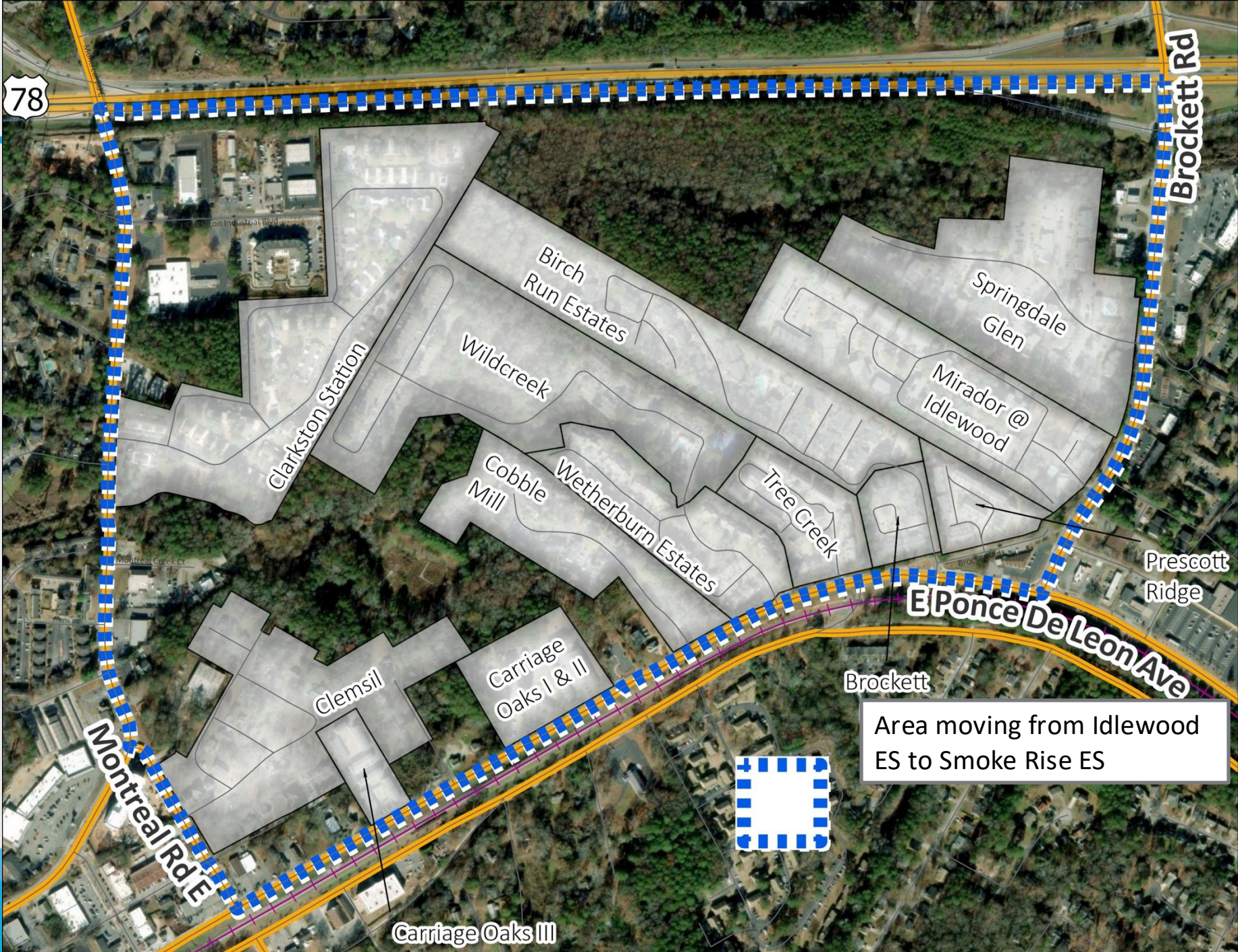
1. **Safety and traffic patterns**
2. **Previous redistricting**
3. **Special programs** (*i.e., programs serving special needs students that require additional classroom space*)
4. **Intact neighborhoods**
5. **Condition of facility**
6. **School feeder alignment**
7. **Efficient and economical operations**

Recommendation

School	Enrollment	Capacity	Seats	Utilization	Change
Idlewood ES	467	768	301	61%	-418
Smoke Rise ES	955	984	29	97%	418



Detail Map



SMOKE RISE ES RESOURCE PLANNINGS

Plan	Leadership	Timeline
Transportation Bus Service/Car Rider	Schools and Leadership; Operations	Spring/Summer
Traffic Planning Congestion and Safety	Public Safety; City of Tucker	Spring/Summer
School Operational Procedures i.e. Lunch; Arrival/Dismissal Procedures; Class Size, etc.	Schools and Leadership	Spring/Summer
Registration for redistricted families	Student Assignment and Planning	Spring – all families will be notified Summer – SA will withdraw and register families

STAFFING IMPACTS



In general, the finance and school teams plan for school administration, support staff, and school operation needs based on the projected enrollment. Smoke Rise's allocation plans will be based on the October enrollment and the projected Idlewood enrollment.

Our allotment team has already begun working on these allocation based on our Resource Allocation Methodology Plan (RAMP). This determines the number of resources per building per grade.

The allocation will be finalized before the end of the school year.

FEEDBACK FRAMEWORK



District Website



Commentary
submission
email



Recorded Community
Engagement Forums

E-Mail: DCSDBuilds@dekalbschoolsga.org (insert “Smoke Rise ES” in Subject line)

Redistricting: www.dekalbschoolsga.org/redistricting

Capital Improvement Program: www.dekalbschoolsga.org/cip

Student Assignment Planning: www.dekalbschoolsga.org/sap





PARTICIPATE IN
THOUGHT EXCHANGE



THANK YOU!

JANUARY 23, 2025

