

Woodridge Elementary School

	2015-16	2016-17	2017-18	2018-19	2019-20	2020-21	2021-22	2022-23	2023-24	2024-25	2025-26	2026-27	2027-28	2028-29	2029-30	2030-31
PK	31	31	32	33	34	25	33	34	34	34	34	34	34	34	34	34
K	62	103	86	65	90	59	79	79	80	81	82	83	84	85	86	87
1	106	66	103	79	66	78	82	81	81	82	83	84	85	86	87	88
2	79	96	67	96	90	67	79	83	82	82	83	85	86	87	88	89
3	84	108	91	60	94	74	64	73	77	76	76	78	80	81	82	83
4	93	93	107	91	76	82	70	61	69	73	72	73	75	77	78	79
5	88	89	96	92	75	65	77	66	57	65	69	68	69	71	73	74
Total: PK-5	543	586	582	516	525	450	484	477	480	493	499	505	513	521	528	534

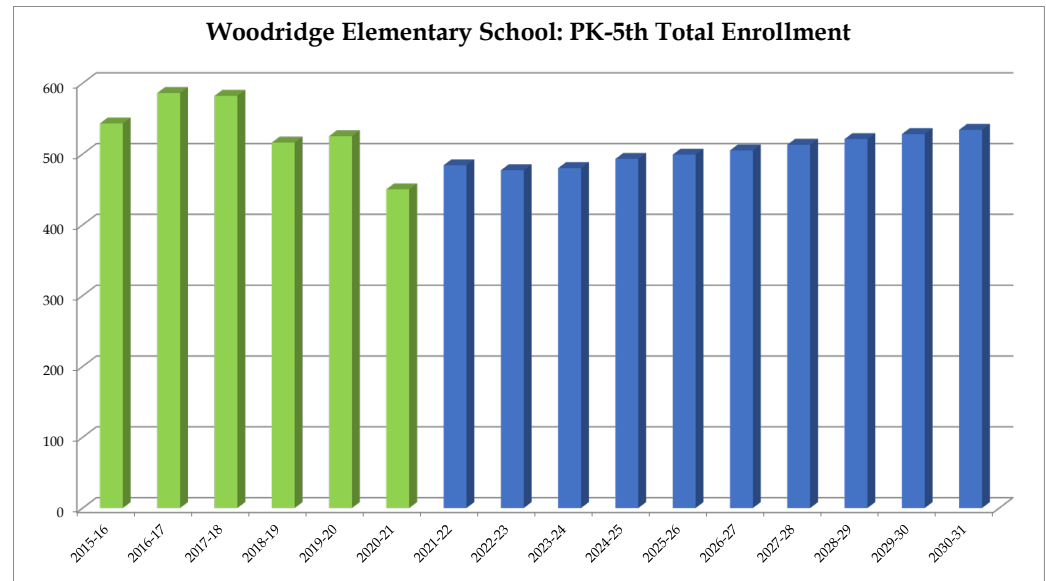
Total: PK-5	543	586	582	516	525	450	484	477	480	493	499	505	513	521	528	534
Change		43	-4	-66	9	-75	34	-7	3	13	6	6	8	8	7	6
% Change		7.9%	-0.7%	-11.3%	1.7%	-14.3%	7.6%	-1.4%	0.6%	2.7%	1.2%	1.2%	1.6%	1.6%	1.3%	1.1%

Forecasts developed January 2021

Green cells (2020-2021 and earlier) are historical data

Blue cells (2021-2022 and later) are forecasted years

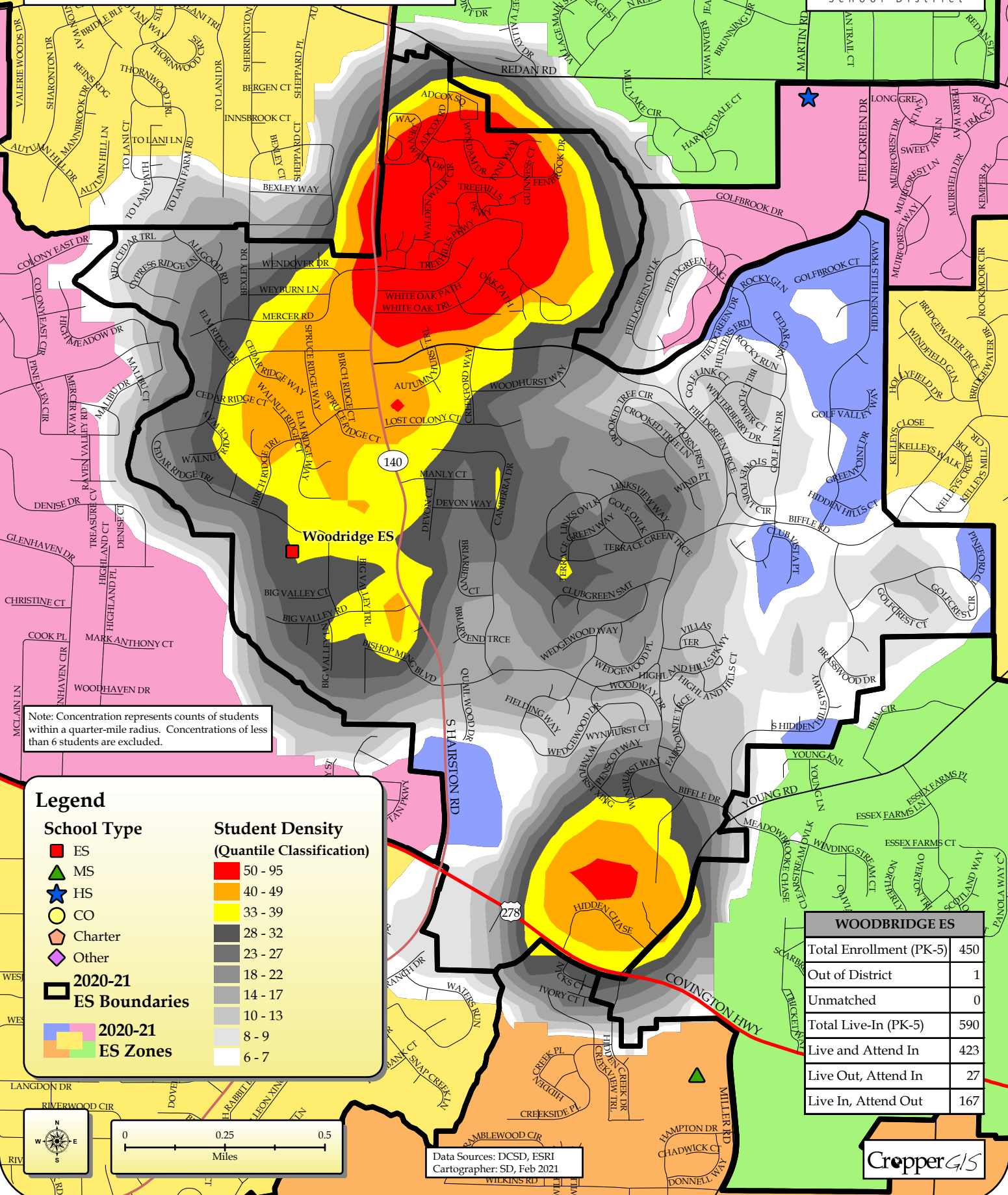
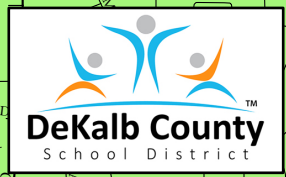
- Total enrollment is forecasted to increase by 49 students, or 10.9%, between 2020-21 and 2025-26.
 - Enrollment is forecasted to then increase by 35 students or 7.0%, between 2025-26 and 2030-31.
- **In total, enrollment is forecasted to increase by 84 students, or 18.7%, between 2020-21 and 2030-31.**



DeKalb County School District, GA

Woodbridge Elementary

2020-21 Student Density



Note: Concentration represents counts of students within a quarter-mile radius. Concentrations of less than 6 students are excluded.

Legend

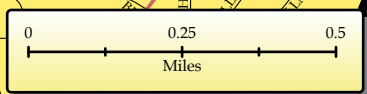
Student Density (Quantile Classification)

School Type

- ES
- ▲ MS
- ★ HS
- CO
- ◇ Charter
- ◇ Other
- 2020-21 ES Boundaries
- 2020-21 ES Zones

- 50 - 95
- 40 - 49
- 33 - 39
- 28 - 32
- 23 - 27
- 18 - 22
- 14 - 17
- 10 - 13
- 8 - 9
- 6 - 7

WOODBRIDGE ES	
Total Enrollment (PK-5)	450
Out of District	1
Unmatched	0
Total Live-In (PK-5)	590
Live and Attend In	423
Live Out, Attend In	27
Live In, Attend Out	167



Data Sources: DCSD, ESRI
Cartographer: SD, Feb 2021

