

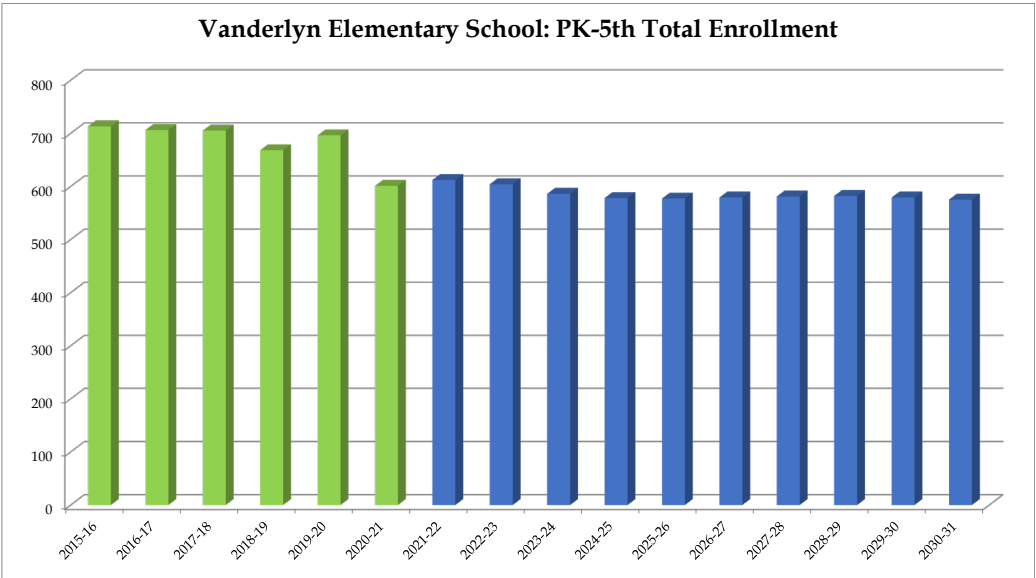
Vanderlyn Elementary School

	2015-16	2016-17	2017-18	2018-19	2019-20	2020-21	2021-22	2022-23	2023-24	2024-25	2025-26	2026-27	2027-28	2028-29	2029-30	2030-31
PK	22	22	22	22	22	21	22	22	22	22	22	22	22	22	22	22
K	116	117	107	105	106	67	90	89	91	92	91	90	89	88	87	88
1	123	133	132	114	120	96	96	94	93	95	96	95	94	93	92	91
2	118	111	129	128	124	106	97	97	95	94	96	98	97	96	95	94
3	142	106	114	119	130	114	108	99	99	97	96	99	101	100	99	98
4	85	132	93	93	104	93	108	99	91	91	89	89	92	94	93	92
5	107	85	108	87	90	104	91	104	95	87	87	86	86	89	91	90
Total: PK-5	713	706	705	668	696	601	612	604	586	578	577	579	581	582	579	575

Total: PK-5	713	706	705	668	696	601	612	604	586	578	577	579	581	582	579	575
Change		-7	-1	-37	28	-95	11	-8	-18	-8	-1	2	2	1	-3	-4
% Change		-1.0%	-0.1%	-5.2%	4.2%	-13.6%	1.8%	-1.3%	-3.0%	-1.4%	-0.2%	0.3%	0.3%	0.2%	-0.5%	-0.7%

Forecasts developed January 2021
 Green cells (2020-2021 and earlier) are historical data
 Blue cells (2021-2022 and later) are forecasted years

- Total enrollment is forecasted to decrease by 24 students, or -4.0%, between 2020-21 and 2025-26.
 - Enrollment is forecasted to then decrease by 2 students or -0.3%, between 2025-26 and 2030-31.
- **In total, enrollment is forecasted to decrease by 26 students, or -4.3%, between 2020-21 and 2030-31.**



DeKalb County School District, GA

Vanderlyn Elementary School

2020-21 Student Density



Note: Concentration represents counts of students within a quarter-mile radius. Concentrations of less than 6 students are excluded.

Legend

School Type

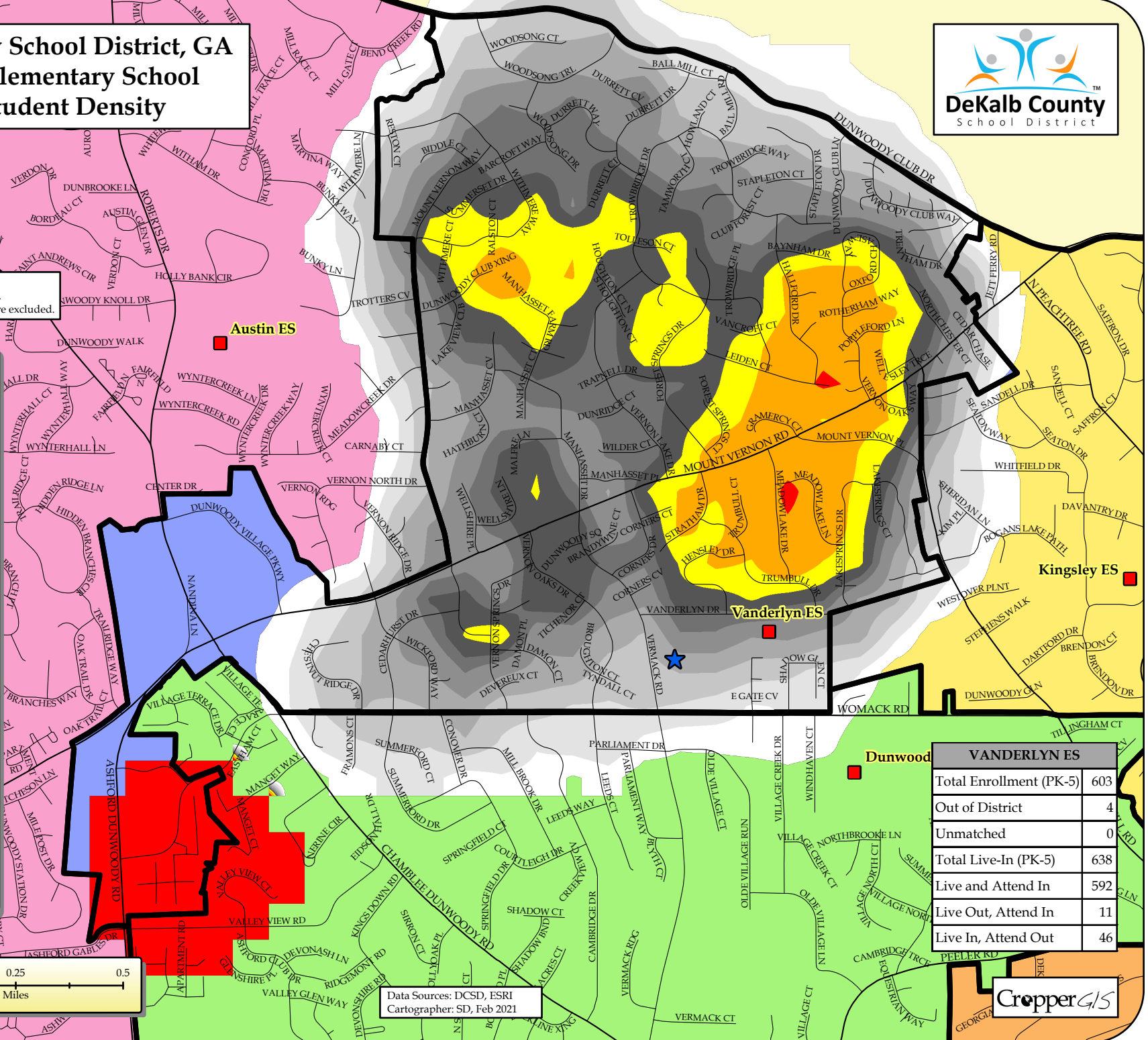
- ES
- MS
- HS
- CO
- Charter
- Other

2020-21 ES Boundaries

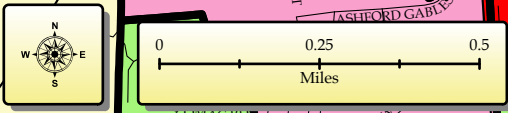
Student Density (Quantile Classification)

- 52 - 127
- 42 - 51
- 37 - 41
- 33 - 36
- 30 - 32
- 25 - 29
- 20 - 24
- 15 - 19
- 10 - 14
- 6 - 9

2020-21 ES Zones



VANDERLYN ES	
Total Enrollment (PK-5)	603
Out of District	4
Unmatched	0
Total Live-In (PK-5)	638
Live and Attend In	592
Live Out, Attend In	11
Live In, Attend Out	46



Data Sources: DCSD, ESRI
Cartographer: SD, Feb 2021

