

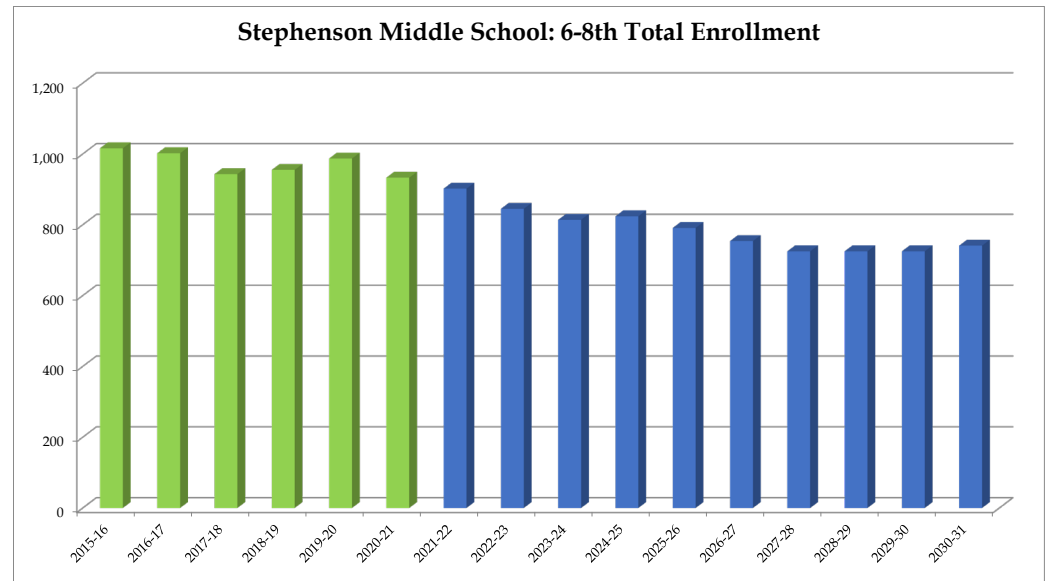
### Stephenson Middle School

	2015-16	2016-17	2017-18	2018-19	2019-20	2020-21	2021-22	2022-23	2023-24	2024-25	2025-26	2026-27	2027-28	2028-29	2029-30	2030-31
6	310	312	309	330	338	302	252	270	276	261	237	240	234	237	241	249
7	344	323	308	312	324	329	308	255	273	279	264	239	242	236	239	243
8	362	367	326	313	325	302	342	320	265	284	290	275	249	252	245	249
<b>Total: 6-8</b>	<b>1016</b>	<b>1002</b>	<b>943</b>	<b>955</b>	<b>987</b>	<b>933</b>	<b>902</b>	<b>845</b>	<b>814</b>	<b>824</b>	<b>791</b>	<b>754</b>	<b>725</b>	<b>725</b>	<b>725</b>	<b>741</b>

<b>Total: 6-8</b>	<b>1016</b>	<b>1002</b>	<b>943</b>	<b>955</b>	<b>987</b>	<b>933</b>	<b>902</b>	<b>845</b>	<b>814</b>	<b>824</b>	<b>791</b>	<b>754</b>	<b>725</b>	<b>725</b>	<b>725</b>	<b>741</b>
<b>Change</b>		-14	-59	12	32	-54	-31	-57	-31	10	-33	-37	-29	0	0	16
<b>% Change</b>		-1.4%	-5.9%	1.3%	3.4%	-5.5%	-3.3%	-6.3%	-3.7%	1.2%	-4.0%	-4.7%	-3.8%	0.0%	0.0%	2.2%

Forecasts developed January 2021  
 Green cells (2020-2021 and earlier) are historical data  
 Blue cells (2021-2022 and later) are forecasted years

- Total enrollment is forecasted to decrease by 142 students, or -15.2%, between 2020-21 and 2025-26.
- Enrollment is forecasted to then decrease by 50 students or -6.3%, between 2025-26 and 2030-31.
- **In total, enrollment is forecasted to decrease by 192 students, or -20.6%, between 2020-21 and 2030-31.**



# DeKalb County School District, GA

## Stephenson Middle School

### 2020-21 Student Density



STEPHENSON MS	
Total Enrollment (6-8)	933
Out of District	2
Unmatched	0
Total Live-In (6-8)	1,093
Live and Attend In	879
Live Out, Attend In	54
Live In, Attend Out	214

### Legend

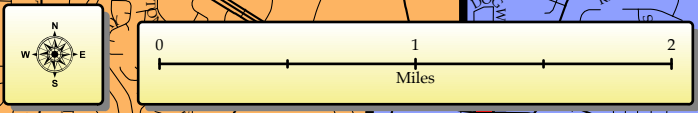
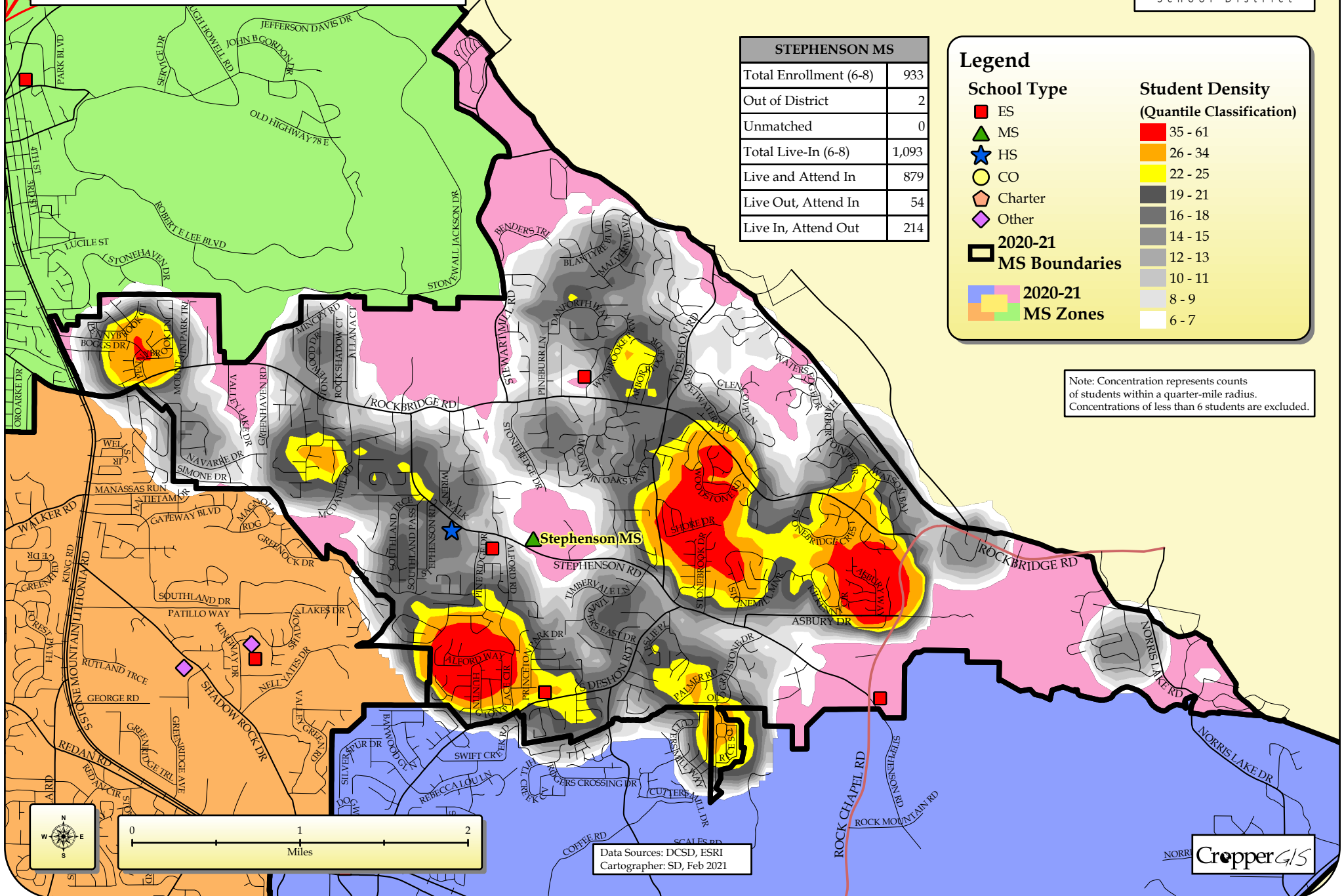
**School Type**

- ES
- ▲ MS
- ★ HS
- CO
- ◊ Charter
- ◆ Other
- 2020-21 MS Boundaries
- 2020-21 MS Zones

**Student Density (Quantile Classification)**

- 35 - 61
- 26 - 34
- 22 - 25
- 19 - 21
- 16 - 18
- 14 - 15
- 12 - 13
- 10 - 11
- 8 - 9
- 6 - 7

Note: Concentration represents counts of students within a quarter-mile radius. Concentrations of less than 6 students are excluded.



Data Sources: DCSD, ESRI  
Cartographer: SD, Feb 2021

