

Stephenson High School

	2015-16	2016-17	2017-18	2018-19	2019-20	2020-21	2021-22	2022-23	2023-24	2024-25	2025-26	2026-27	2027-28	2028-29	2029-30	2030-31
9	493	451	501	417	407	393	390	438	410	339	364	371	352	319	323	314
10	392	408	375	388	324	331	326	324	364	340	281	302	308	292	265	268
11	373	371	328	329	338	289	295	290	288	324	303	250	269	274	260	236
12	358	371	372	309	313	315	283	289	284	282	318	297	245	264	269	255
Total: 9-12	1,616	1,601	1,576	1,443	1,382	1,328	1,294	1,341	1,346	1,285	1,266	1,220	1,174	1,149	1,117	1,073

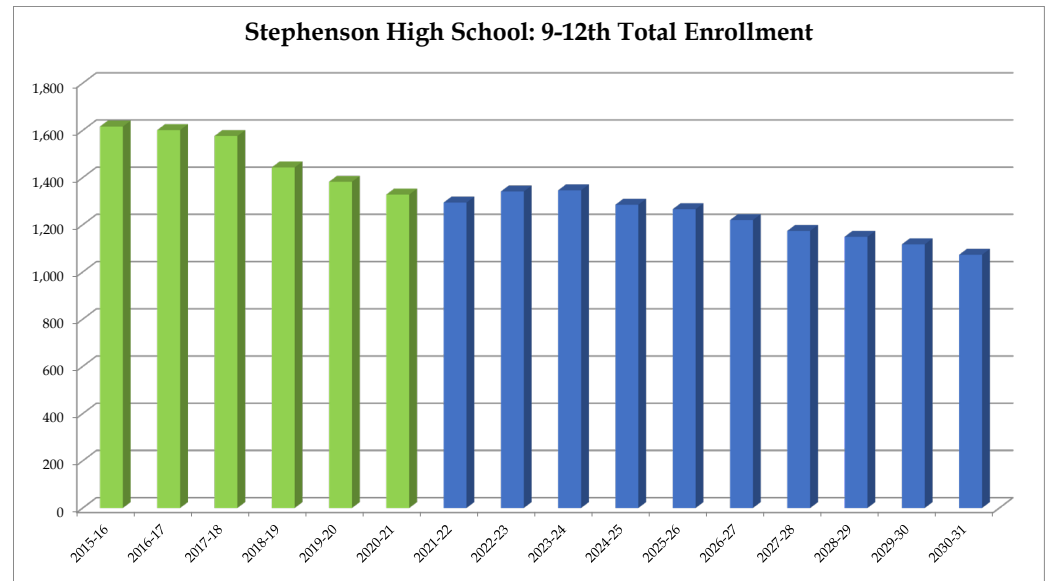
Total: 9-12	1,616	1,601	1,576	1,443	1,382	1,328	1,294	1,341	1,346	1,285	1,266	1,220	1,174	1,149	1,117	1,073
Change		-15	-25	-133	-61	-54	-34	47	5	-61	-19	-46	-46	-25	-32	-44
% Change		-0.9%	-1.6%	-8.4%	-4.2%	-3.9%	-2.6%	3.6%	0.4%	-4.5%	-1.5%	-3.6%	-3.8%	-2.1%	-2.8%	-3.9%

Forecasts developed January 2021

Green cells (2020-2021 and earlier) are historical data

Blue cells (2021-2022 and later) are forecasted years

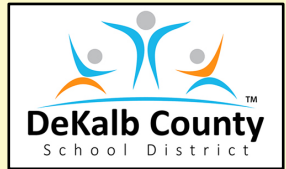
- Total enrollment is forecasted to decrease by 62 students, or -4.7%, between 2020-21 and 2025-26.
- Enrollment is forecasted to then decrease by 193 students or -15.2%, between 2025-26 and 2030-31.
- **In total, enrollment is forecasted to decrease by 255 students, or -19.2%, between 2020-21 and 2030-31.**



DeKalb County School District, GA

Stephenson High School

2020-21 Student Density



STEPHENSON HS	
Total Enrollment (9-12)	1,326
Out of District	15
Unmatched	0
Total Live-In (9-12)	1,482
Live and Attend In	1,186
Live Out, Attend In	140
Live In, Attend Out	296

Legend

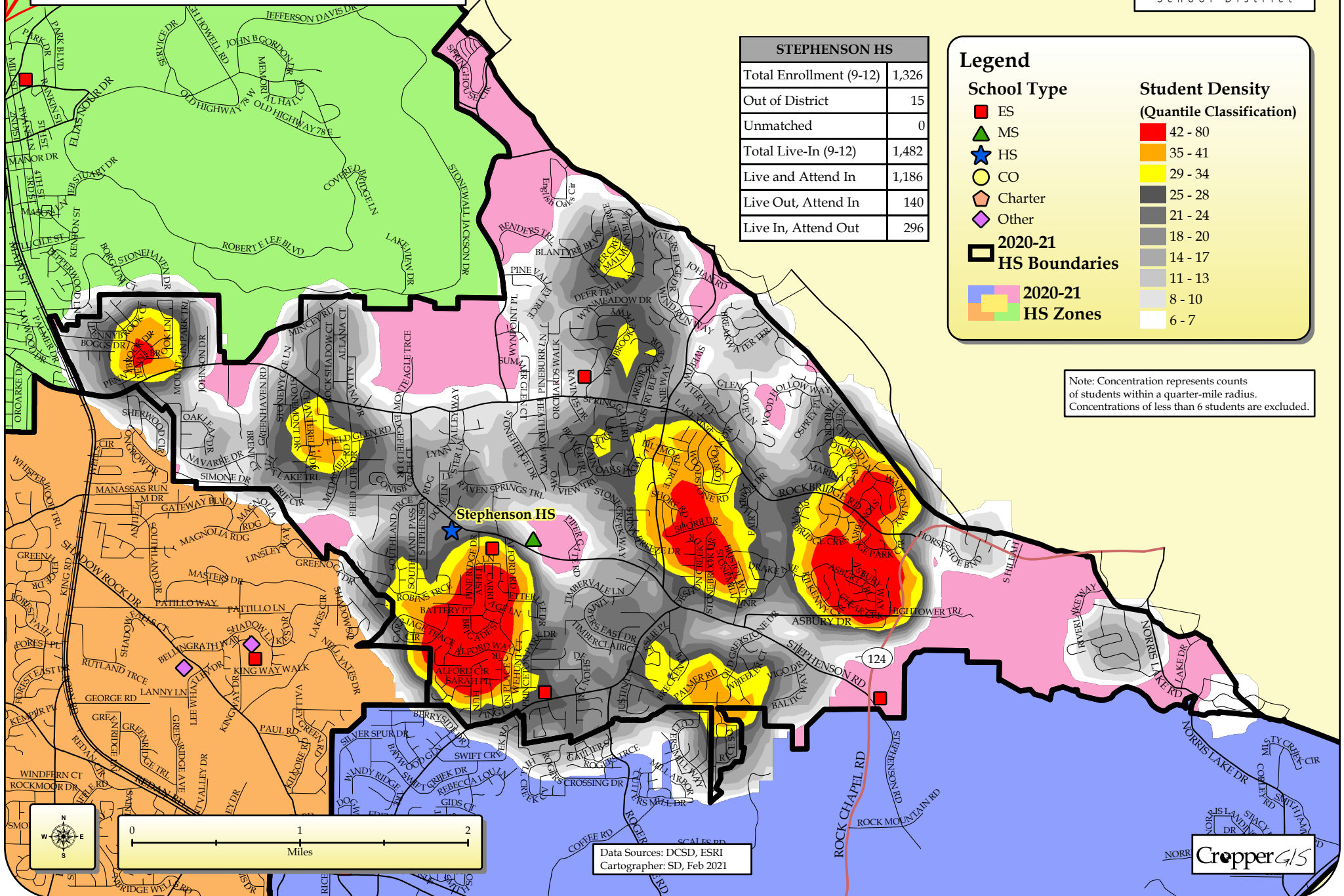
School Type

- ES (Red square)
- MS (Green triangle)
- HS (Blue star)
- CO (Yellow circle)
- Charter (Orange pentagon)
- Other (Purple diamond)
- 2020-21 HS Boundaries (Black outline)
- 2020-21 HS Zones (Colorful shaded area)

Student Density (Quantile Classification)

- 42 - 80 (Red)
- 35 - 41 (Orange)
- 29 - 34 (Yellow)
- 25 - 28 (Dark Gray)
- 21 - 24 (Medium Gray)
- 18 - 20 (Light Gray)
- 14 - 17 (Very Light Gray)
- 11 - 13 (Off-white)
- 8 - 10 (White)
- 6 - 7 (White)

Note: Concentration represents counts of students within a quarter-mile radius. Concentrations of less than 6 students are excluded.



Data Sources: DCSD, ESRI
Cartographer: SD, Feb 2021

