

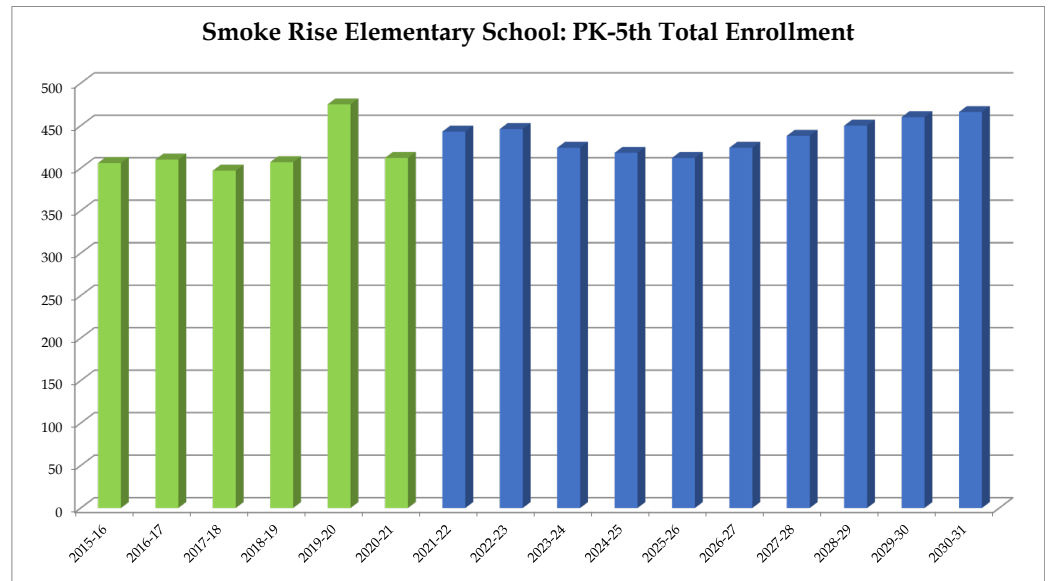
### Smoke Rise Elementary School

	2015-16	2016-17	2017-18	2018-19	2019-20	2020-21	2021-22	2022-23	2023-24	2024-25	2025-26	2026-27	2027-28	2028-29	2029-30	2030-31
PK	30	22	22	23	24	24	24	24	24	24	24	24	24	24	24	24
K	52	66	57	61	78	42	60	60	61	62	64	65	67	68	69	68
1	68	56	62	69	72	72	64	62	63	64	65	67	68	70	71	72
2	73	68	65	66	84	71	74	65	63	64	65	68	70	71	73	74
3	67	81	65	62	73	84	73	75	66	64	65	68	71	73	74	76
4	54	56	68	62	68	60	86	72	74	65	63	66	69	72	74	75
5	62	61	58	64	76	59	62	88	73	75	66	66	69	72	75	77
<b>Total: PK-5</b>	<b>406</b>	<b>410</b>	<b>397</b>	<b>407</b>	<b>475</b>	<b>412</b>	<b>443</b>	<b>446</b>	<b>424</b>	<b>418</b>	<b>412</b>	<b>424</b>	<b>438</b>	<b>450</b>	<b>460</b>	<b>466</b>

<b>Total: PK-5</b>	<b>406</b>	<b>410</b>	<b>397</b>	<b>407</b>	<b>475</b>	<b>412</b>	<b>443</b>	<b>446</b>	<b>424</b>	<b>418</b>	<b>412</b>	<b>424</b>	<b>438</b>	<b>450</b>	<b>460</b>	<b>466</b>
<b>Change</b>		4	-13	10	68	-63	31	3	-22	-6	-6	12	14	12	10	6
<b>% Change</b>		1.0%	-3.2%	2.5%	16.7%	-13.3%	7.5%	0.7%	-4.9%	-1.4%	-1.4%	2.9%	3.3%	2.7%	2.2%	1.3%

Forecasts developed January 2021  
 Green cells (2020-2021 and earlier) are historical data  
 Blue cells (2021-2022 and later) are forecasted years

- Total enrollment is forecasted to stay the same between 2020-21 and 2025-26.
  - Enrollment is forecasted to then increase by 54 students or 13.1%, between 2025-26 and 2030-31.
- **In total, enrollment is forecasted to increase by 54 students, or 13.1%, between 2020-21 and 2030-31.**



# DeKalb County School District, GA

## Smoke Rise Elementary School

### 2020-21 Student Density



SMOKE RISE ES	
Total Enrollment (PK-5)	407
Out of District	4
Unmatched	0
Total Live-In (PK-5)	459
Live and Attend In	359
Live Out, Attend In	48
Live In, Attend Out	100

### Legend

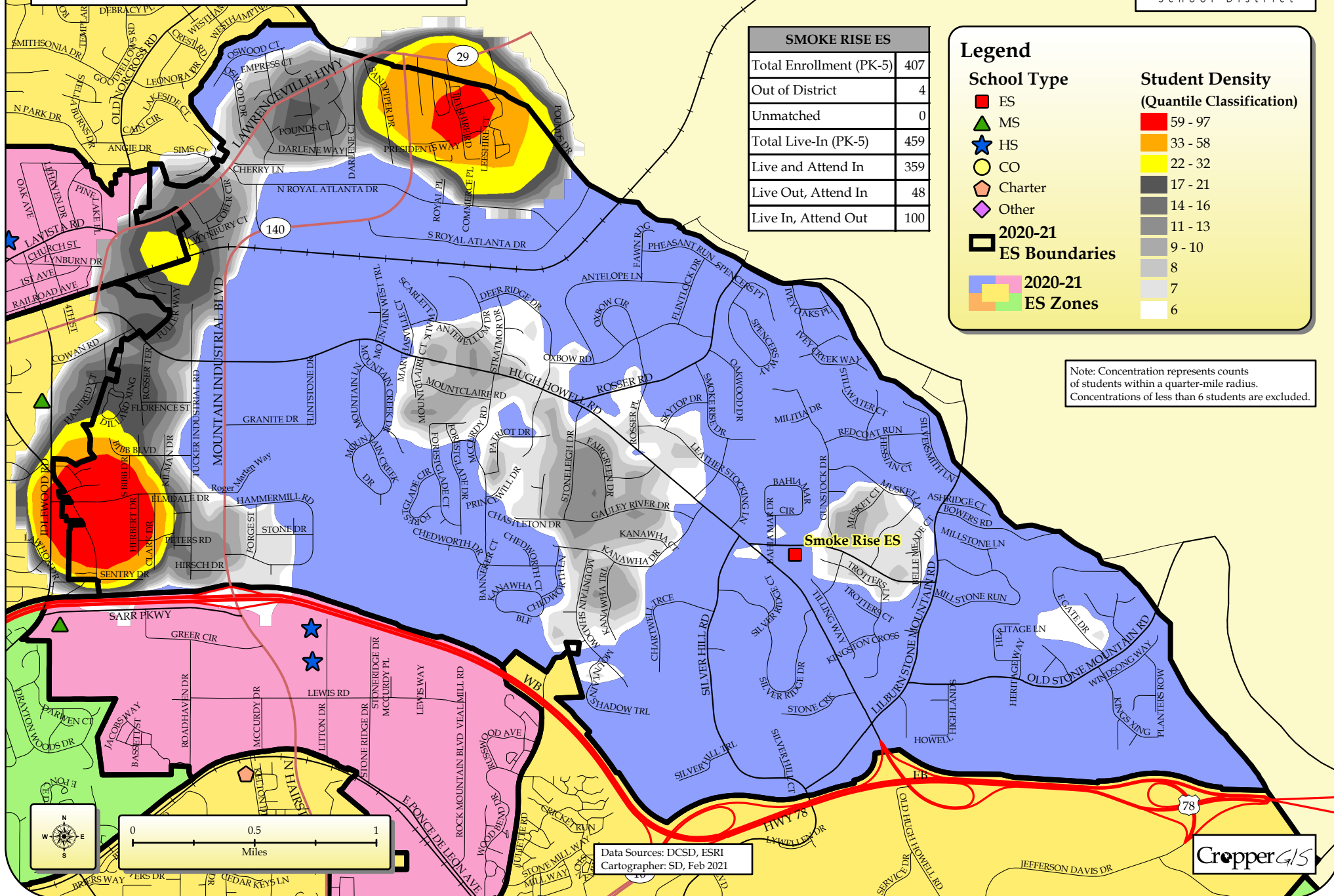
#### School Type

- ES
- ▲ MS
- ★ HS
- CO
- ◊ Charter
- ◆ Other
- 2020-21 ES Boundaries

#### Student Density (Quantile Classification)

- 59 - 97
- 33 - 58
- 22 - 32
- 17 - 21
- 14 - 16
- 11 - 13
- 9 - 10
- 8
- 7
- 6

Note: Concentration represents counts of students within a quarter-mile radius. Concentrations of less than 6 students are excluded.



Data Sources: DCSD, ESRI  
Cartographer: SD, Feb 2021

