

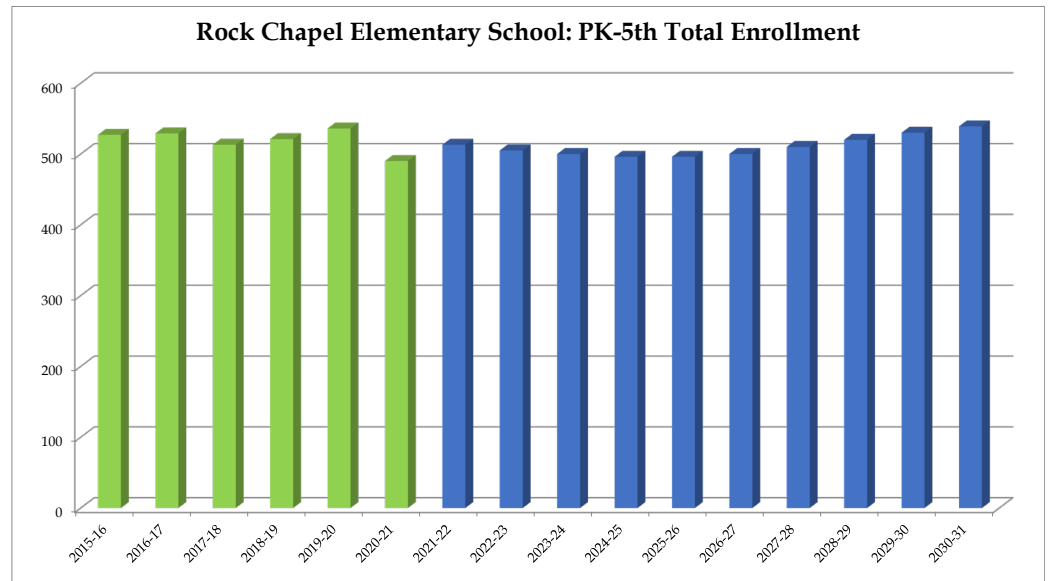
### Rock Chapel Elementary School

	2015-16	2016-17	2017-18	2018-19	2019-20	2020-21	2021-22	2022-23	2023-24	2024-25	2025-26	2026-27	2027-28	2028-29	2029-30	2030-31
PK	33	30	29	33	35	34	34	35	35	35	35	35	35	35	35	35
K	75	86	74	82	88	63	78	77	78	80	82	81	83	84	86	87
1	71	70	79	72	79	74	75	74	73	74	75	77	78	80	81	83
2	97	68	77	75	83	81	77	77	75	74	75	77	79	80	82	83
3	84	95	80	84	83	81	84	79	79	77	75	77	79	81	82	84
4	80	93	79	86	74	82	80	81	77	77	75	76	78	80	82	83
5	87	87	95	89	94	75	85	82	83	79	79	77	78	80	82	84
<b>Total: PK-5</b>	<b>527</b>	<b>529</b>	<b>513</b>	<b>521</b>	<b>536</b>	<b>490</b>	<b>513</b>	<b>505</b>	<b>500</b>	<b>496</b>	<b>496</b>	<b>500</b>	<b>510</b>	<b>520</b>	<b>530</b>	<b>539</b>

<b>Total: PK-5</b>	<b>527</b>	<b>529</b>	<b>513</b>	<b>521</b>	<b>536</b>	<b>490</b>	<b>513</b>	<b>505</b>	<b>500</b>	<b>496</b>	<b>496</b>	<b>500</b>	<b>510</b>	<b>520</b>	<b>530</b>	<b>539</b>
<b>Change</b>		2	-16	8	15	-46	23	-8	-5	-4	0	4	10	10	10	9
<b>% Change</b>		0.4%	-3.0%	1.6%	2.9%	-8.6%	4.7%	-1.6%	-1.0%	-0.8%	0.0%	0.8%	2.0%	2.0%	1.9%	1.7%

Forecasts developed January 2021  
 Green cells (2020-2021 and earlier) are historical data  
 Blue cells (2021-2022 and later) are forecasted years

- Total enrollment is forecasted to increase by 6 students, or 1.2%, between 2020-21 and 2025-26.
  - Enrollment is forecasted to then increase by 43 students or 8.7%, between 2025-26 and 2030-31.
- **In total, enrollment is forecasted to increase by 49 students, or 10.0%, between 2020-21 and 2030-31.**



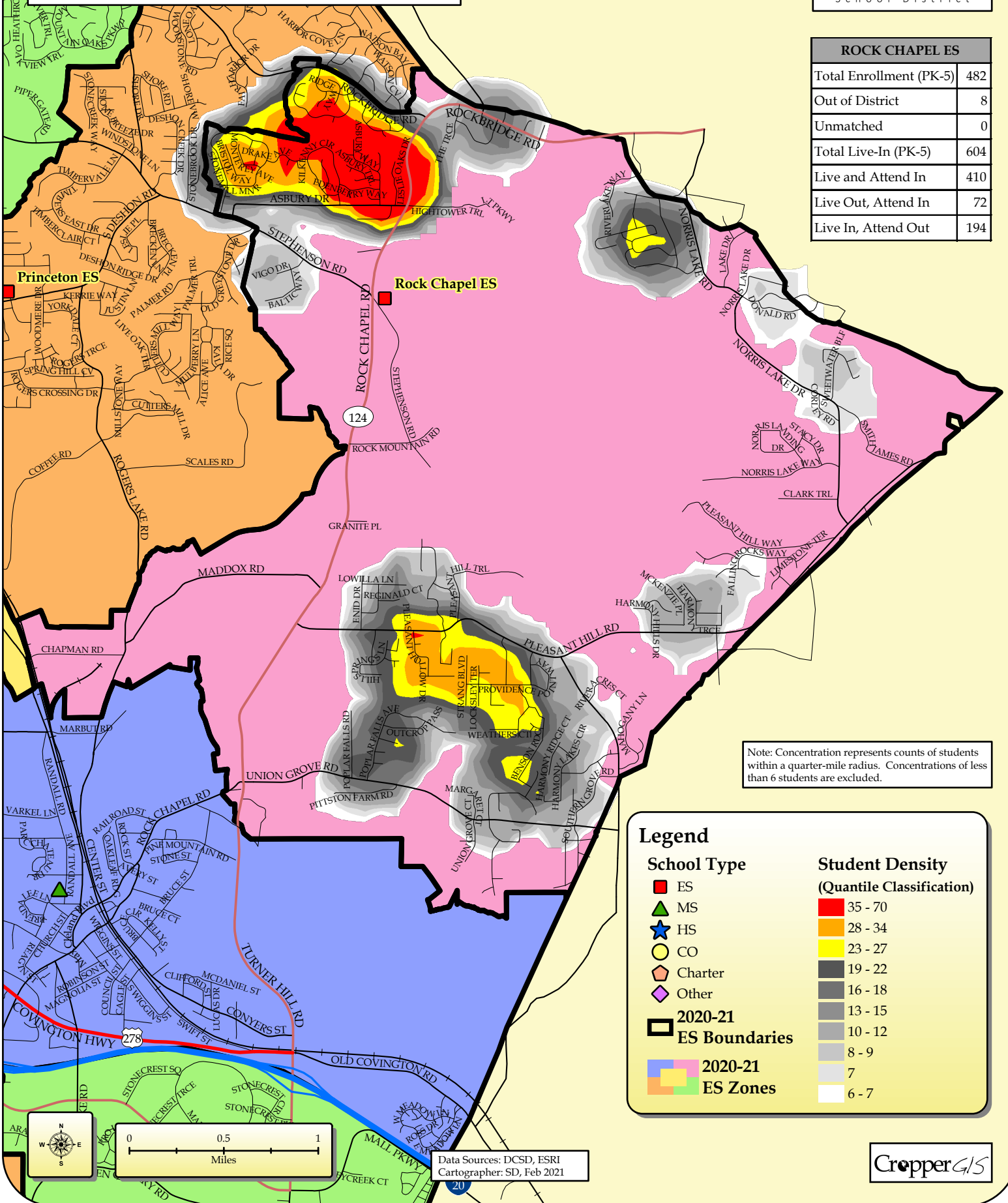
# DeKalb County School District, GA

## Rock Chapel Elementary School

### 2020-21 Student Density



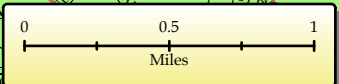
ROCK CHAPEL ES	
Total Enrollment (PK-5)	482
Out of District	8
Unmatched	0
Total Live-In (PK-5)	604
Live and Attend In	410
Live Out, Attend In	72
Live In, Attend Out	194



Note: Concentration represents counts of students within a quarter-mile radius. Concentrations of less than 6 students are excluded.

### Legend

<b>School Type</b>	<b>Student Density (Quantile Classification)</b>
■ ES	■ 35 - 70
▲ MS	■ 28 - 34
★ HS	■ 23 - 27
○ CO	■ 19 - 22
◻ Charter	■ 16 - 18
◇ Other	■ 13 - 15
□ 2020-21 ES Boundaries	■ 10 - 12
■ 2020-21 ES Zones	■ 8 - 9
	■ 7
	■ 6 - 7



Data Sources: DCSD, ESRI  
Cartographer: SD, Feb 2021

