

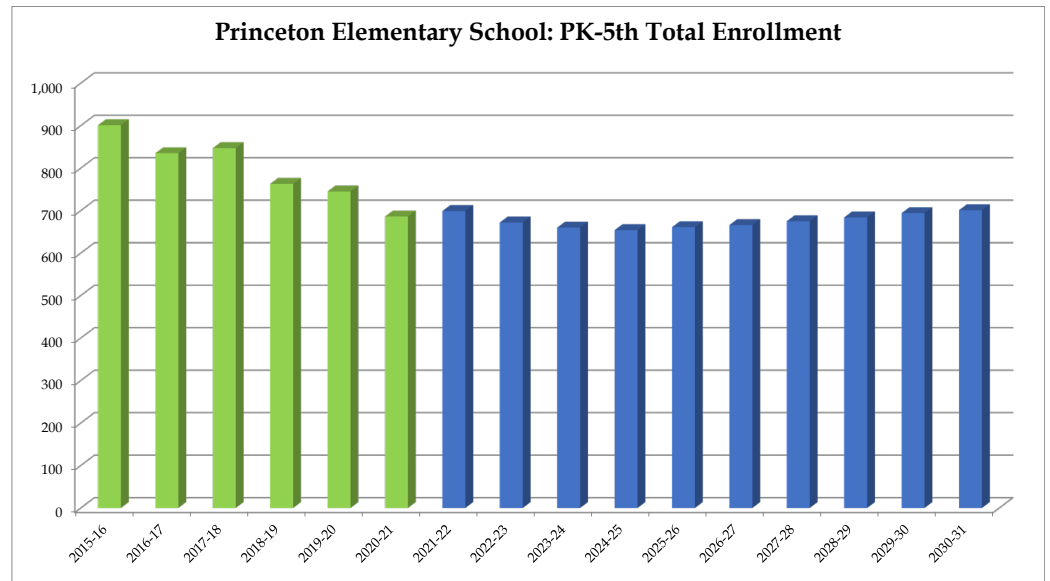
Princeton Elementary School

	2015-16	2016-17	2017-18	2018-19	2019-20	2020-21	2021-22	2022-23	2023-24	2024-25	2025-26	2026-27	2027-28	2028-29	2029-30	2030-31
PK	22	22	22	23	25	31	31	31	31	31	31	31	31	31	31	31
K	117	119	124	101	101	95	103	102	103	104	106	106	108	108	110	109
1	153	110	140	128	110	102	108	106	105	106	107	109	110	112	113	115
2	150	131	120	139	120	113	103	109	107	106	107	109	111	112	114	115
3	158	150	131	101	146	116	112	101	107	105	104	106	108	110	111	113
4	153	155	155	125	109	128	115	110	99	105	103	103	105	107	109	110
5	148	148	155	146	134	101	127	113	108	97	103	102	102	104	106	108
Total: PK-5	901	835	847	763	745	686	699	672	660	654	661	666	675	684	694	701

Total: PK-5	901	835	847	763	745	686	699	672	660	654	661	666	675	684	694	701
Change		-66	12	-84	-18	-59	13	-27	-12	-6	7	5	9	9	10	7
% Change		-7.3%	1.4%	-9.9%	-2.4%	-7.9%	1.9%	-3.9%	-1.8%	-0.9%	1.1%	0.8%	1.4%	1.3%	1.5%	1.0%

Forecasts developed January 2021
 Green cells (2020-2021 and earlier) are historical data
 Blue cells (2021-2022 and later) are forecasted years

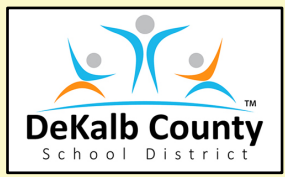
- Total enrollment is forecasted to decrease by 25 students, or -3.6%, between 2020-21 and 2025-26.
- Enrollment is forecasted to then increase by 40 students or 6.1%, between 2025-26 and 2030-31.
- **In total, enrollment is forecasted to increase by 15 students, or 2.2%, between 2020-21 and 2030-31.**



DeKalb County School District, GA

Princeton Elementary School

2020-21 Student Density



Legend

School Type

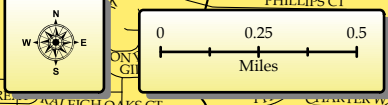
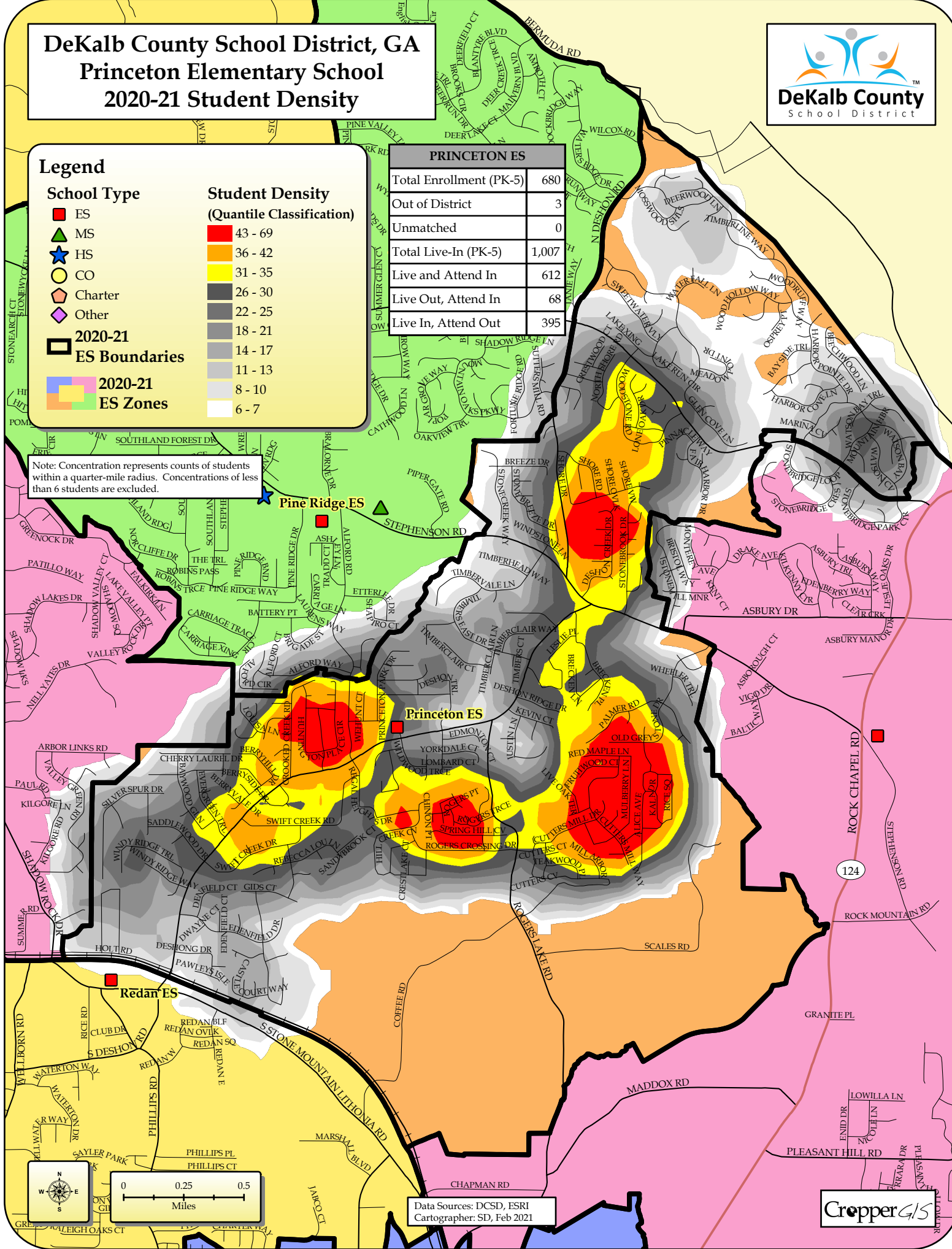
- ES (Red square)
- MS (Green triangle)
- HS (Blue star)
- CO (Yellow circle)
- Charter (Orange pentagon)
- Other (Purple diamond)
- 2020-21 ES Boundaries (Black outline)
- 2020-21 ES Zones (Color swatches)

Student Density (Quantile Classification)

- 43 - 69 (Red)
- 36 - 42 (Orange)
- 31 - 35 (Yellow)
- 26 - 30 (Light Gray)
- 22 - 25 (Medium Gray)
- 18 - 21 (Dark Gray)
- 14 - 17 (Lightest Gray)
- 11 - 13 (Very Light Gray)
- 8 - 10 (Off-white)
- 6 - 7 (White)

PRINCETON ES	
Total Enrollment (PK-5)	680
Out of District	3
Unmatched	0
Total Live-In (PK-5)	1,007
Live and Attend In	612
Live Out, Attend In	68
Live In, Attend Out	395

Note: Concentration represents counts of students within a quarter-mile radius. Concentrations of less than 6 students are excluded.



Data Sources: DCSD, ESRI
Cartographer: SD, Feb 2021

