

Pine Ridge Elementary School

	2015-16	2016-17	2017-18	2018-19	2019-20	2020-21	2021-22	2022-23	2023-24	2024-25	2025-26	2026-27	2027-28	2028-29	2029-30	2030-31
PK	63	58	59	60	63	54	59	63	63	63	63	63	63	63	63	63
K	82	72	100	84	73	70	71	71	71	72	73	76	77	78	80	81
1	95	94	73	88	92	75	77	75	75	75	76	77	79	80	81	83
2	106	97	89	66	84	83	74	73	71	71	71	74	75	77	78	79
3	97	111	100	77	74	93	84	75	74	72	72	72	75	77	79	80
4	109	107	105	92	93	80	95	86	77	75	73	74	74	77	79	81
5	106	126	119	103	95	87	81	96	87	78	76	74	75	75	79	81
Total: PK-5	658	665	645	570	574	542	541	539	518	506	504	510	518	527	539	548

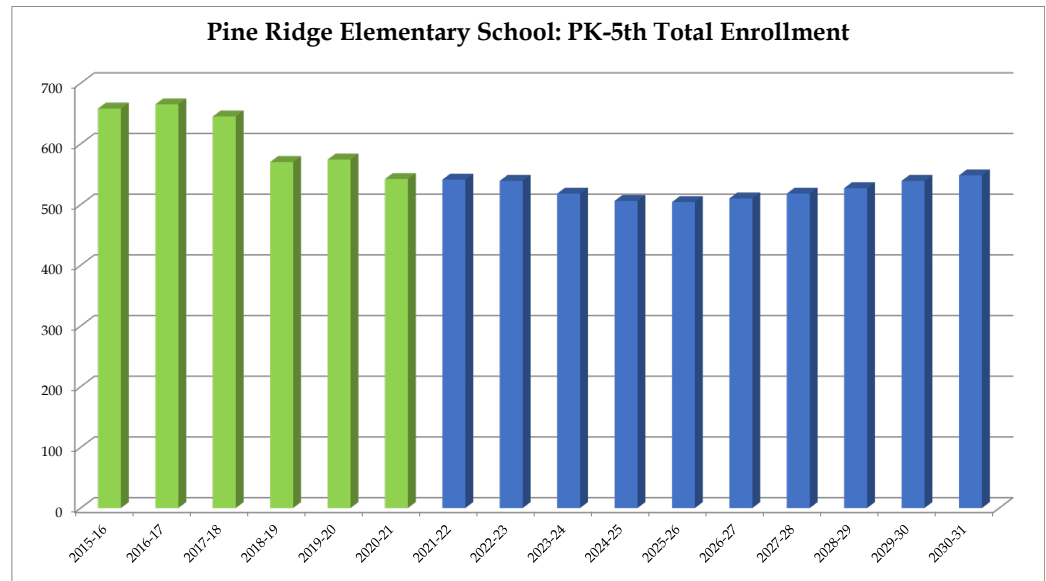
Total: PK-5	658	665	645	570	574	542	541	539	518	506	504	510	518	527	539	548
Change		7	-20	-75	4	-32	-1	-2	-21	-12	-2	6	8	9	12	9
% Change		1.1%	-3.0%	-11.6%	0.7%	-5.6%	-0.2%	-0.4%	-3.9%	-2.3%	-0.4%	1.2%	1.6%	1.7%	2.3%	1.7%

Forecasts developed January 2021

Green cells (2020-2021 and earlier) are historical data

Blue cells (2021-2022 and later) are forecasted years

- Total enrollment is forecasted to decrease by 38 students, or -7.0%, between 2020-21 and 2025-26.
 - Enrollment is forecasted to then increase by 44 students or 8.7%, between 2025-26 and 2030-31.
- **In total, enrollment is forecasted to increase by 6 students, or 1.1%, between 2020-21 and 2030-31.**



DeKalb County School District, GA

Pine Ridge Elementary School

2020-21 Student Density



Note: Concentration represents counts of students within a quarter-mile radius. Concentrations of less than 6 students are excluded.

Legend

School Type

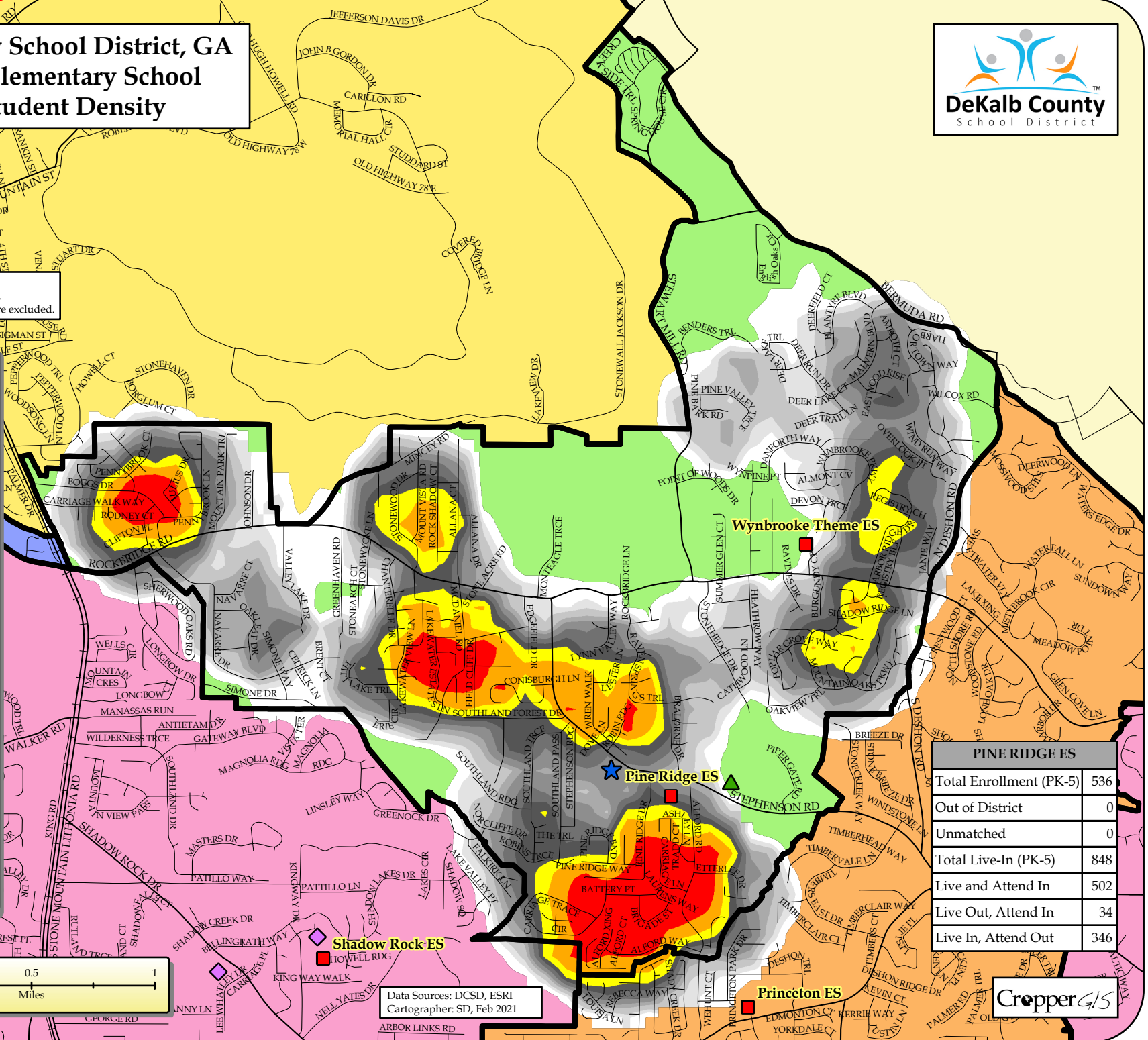
- ES
- MS
- HS
- CO
- Charter
- Other

2020-21 ES Boundaries

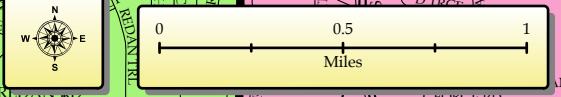
Student Density (Quantile Classification)

- 35 - 50
- 29 - 34
- 25 - 28
- 22 - 24
- 19 - 21
- 16 - 18
- 14 - 15
- 11 - 13
- 9 - 10
- 6 - 8

2020-21 ES Zones



PINE RIDGE ES	
Total Enrollment (PK-5)	536
Out of District	0
Unmatched	0
Total Live-In (PK-5)	848
Live and Attend In	502
Live Out, Attend In	34
Live In, Attend Out	346



Data Sources: DCSD, ESRI
Cartographer: SD, Feb 2021

