

Peachtree Charter Middle School

	2015-16	2016-17	2017-18	2018-19	2019-20	2020-21	2021-22	2022-23	2023-24	2024-25	2025-26	2026-27	2027-28	2028-29	2029-30	2030-31
6	497	543	526	545	526	480	537	495	501	565	546	502	493	496	514	527
7	518	491	542	512	541	482	475	532	490	496	559	541	497	488	491	509
8	473	526	511	554	506	515	501	489	548	505	511	576	557	512	503	506
Total: 6-8	1488	1560	1579	1611	1573	1477	1513	1516	1539	1566	1616	1619	1547	1496	1508	1542

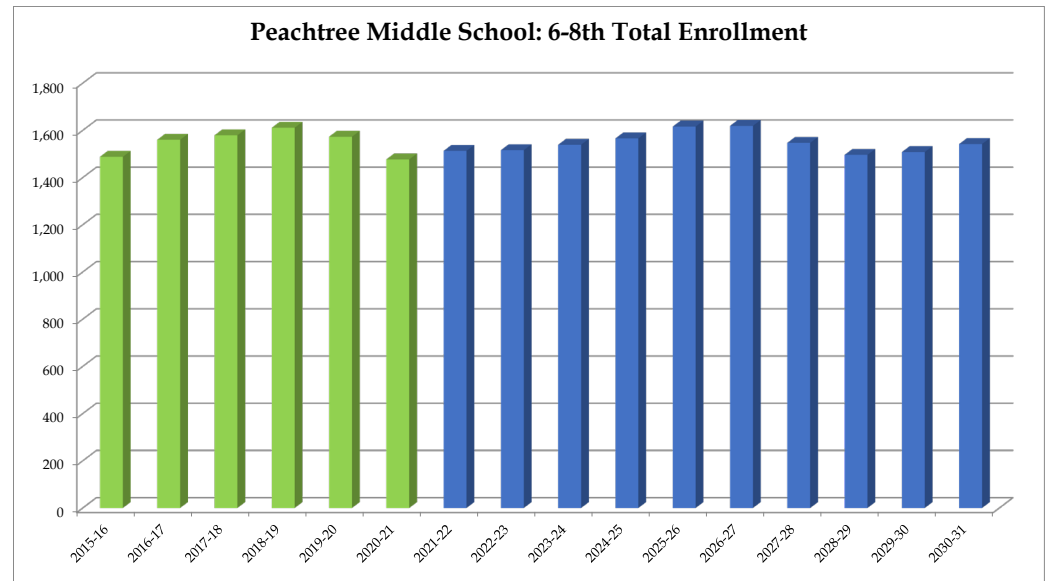
Total: 6-8	1488	1560	1579	1611	1573	1477	1513	1516	1539	1566	1616	1619	1547	1496	1508	1542
Change		72	19	32	-38	-96	36	3	23	27	50	3	-72	-51	12	34
% Change		4.8%	1.2%	2.0%	-2.4%	-6.1%	2.4%	0.2%	1.5%	1.8%	3.2%	0.2%	-4.4%	-3.3%	0.8%	2.3%

Forecasts developed January 2021

Green cells (2020-2021 and earlier) are historical data

Blue cells (2021-2022 and later) are forecasted years

- Total enrollment is forecasted to increase by 139 students, or 9.4%, between 2020-21 and 2025-26.
 - Enrollment is forecasted to then decrease by 74 students or -4.6%, between 2025-26 and 2030-31.
- **In total, enrollment is forecasted to increase by 65 students, or 4.4%, between 2020-21 and 2030-31.**



DeKalb County School District, GA

Peachtree Charter Middle School

2020-21 Student Density



Note: Concentration represents counts of students within a quarter-mile radius. Concentrations of less than 6 students are excluded.

PEACHTREE CHARTER MS	
Total Enrollment (6-8)	1,456
Out of District	11
Unmatched	0
Total Live-In (6-8)	1,615
Live and Attend In	1,397
Live Out, Attend In	59
Live In, Attend Out	218

Legend

School Type

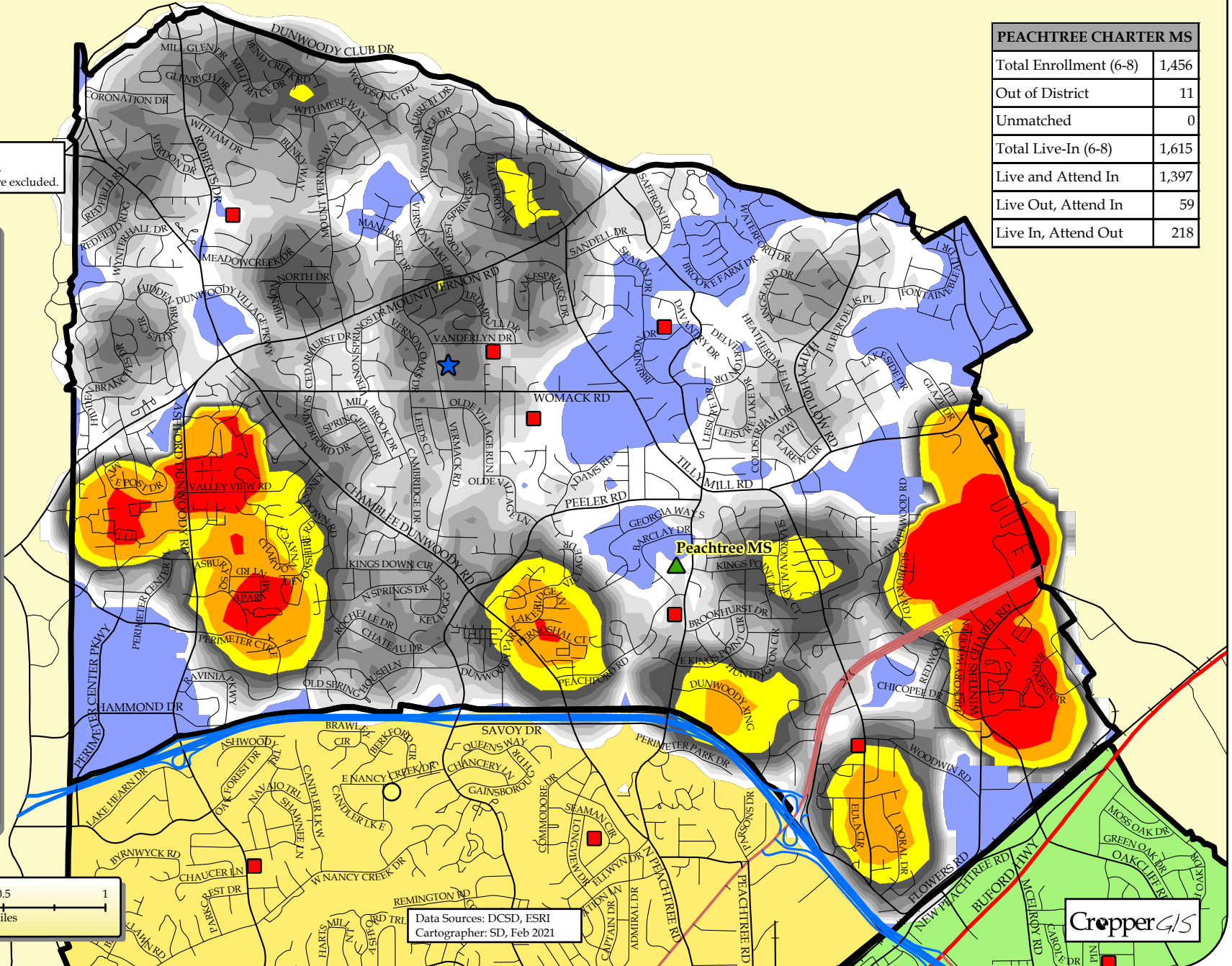
- ES: Red square
- MS: Green triangle
- HS: Blue star
- CO: Yellow circle
- Charter: Orange pentagon
- Other: Purple diamond

2020-21 MS Boundaries

Student Density (Quantile Classification)

- 49 - 127: Red
- 33 - 48: Orange
- 23 - 32: Yellow
- 19 - 22: Light Yellow
- 16 - 18: Pale Yellow
- 14 - 15: Light Gray
- 12 - 13: Medium Gray
- 10 - 11: Dark Gray
- 8 - 9: Very Dark Gray
- 6 - 7: Black

2020-21 MS Zones



Data Sources: DCSD, ESRI
Cartographer: SD, Feb 2021

