

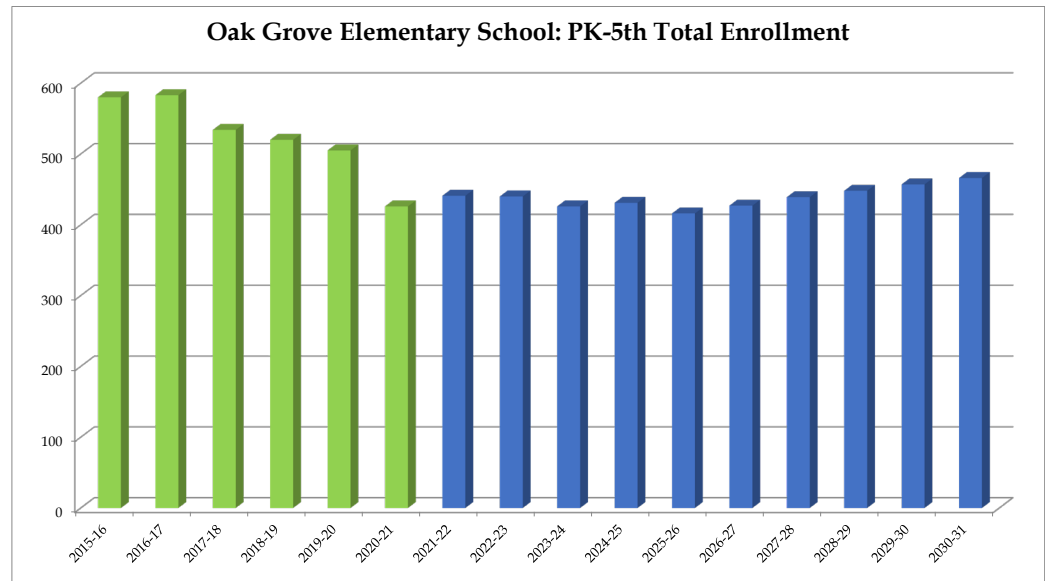
Oak Grove Elementary School

	2015-16	2016-17	2017-18	2018-19	2019-20	2020-21	2021-22	2022-23	2023-24	2024-25	2025-26	2026-27	2027-28	2028-29	2029-30	2030-31
PK	22	22	22	44	44	41	44	44	44	44	44	44	44	44	44	44
K	84	78	72	57	80	36	58	60	62	63	64	66	68	69	71	72
1	108	86	83	90	70	88	64	63	65	67	68	70	71	73	74	76
2	104	113	92	75	88	59	87	63	62	64	66	67	69	70	72	73
3	90	112	110	88	69	79	58	84	61	60	62	65	66	68	69	71
4	99	78	86	88	73	57	76	55	80	58	57	60	63	64	66	67
5	73	94	69	78	81	66	54	71	52	75	55	55	58	60	61	63
Total: PK-5	580	583	534	520	505	426	441	440	426	431	416	427	439	448	457	466

Total: PK-5	580	583	534	520	505	426	441	440	426	431	416	427	439	448	457	466
Change		3	-49	-14	-15	-79	15	-1	-14	5	-15	11	12	9	9	9
% Change		0.5%	-8.4%	-2.6%	-2.9%	-15.6%	3.5%	-0.2%	-3.2%	1.2%	-3.5%	2.6%	2.8%	2.1%	2.0%	2.0%

Forecasts developed January 2021
 Green cells (2020-2021 and earlier) are historical data
 Blue cells (2021-2022 and later) are forecasted years

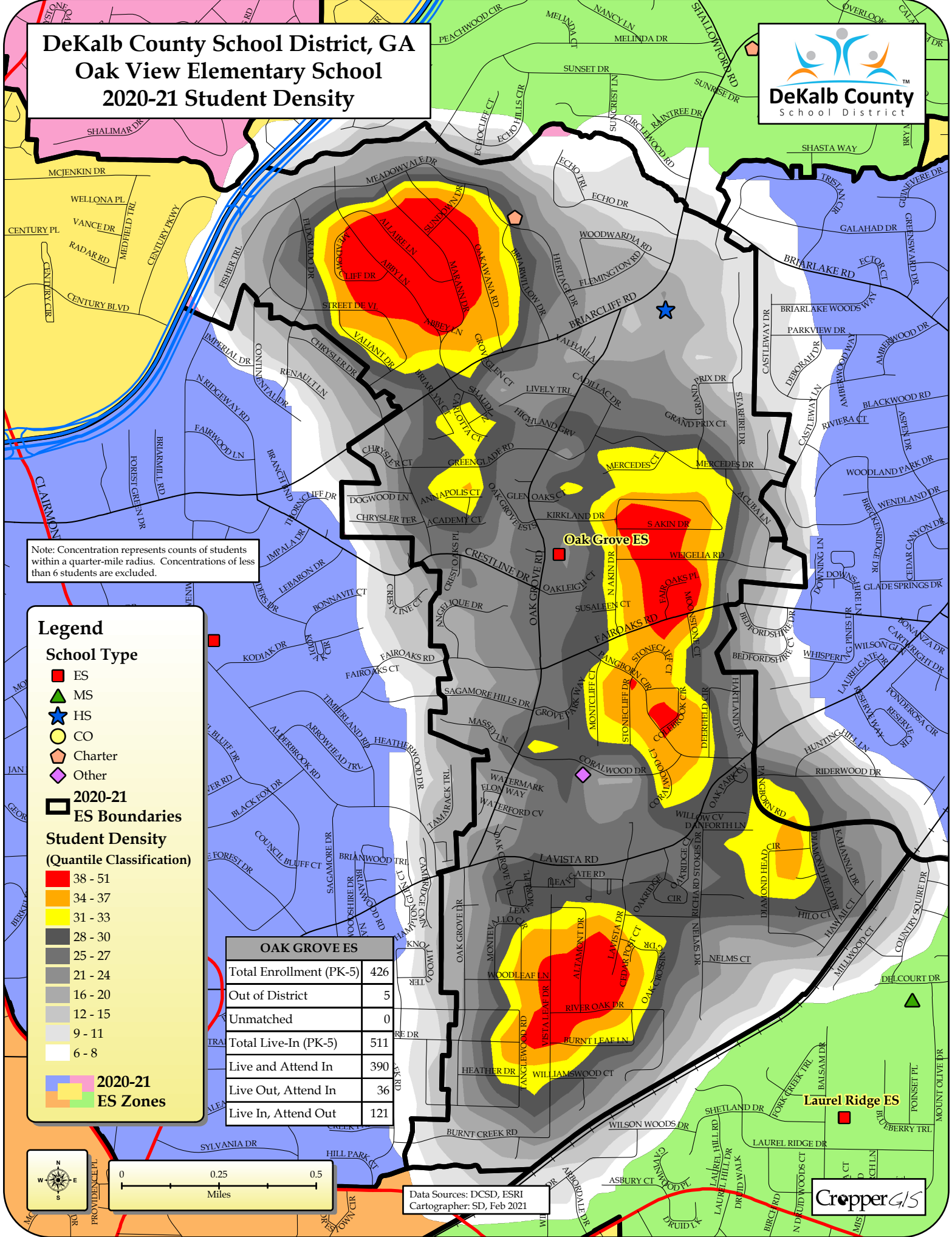
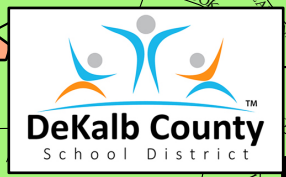
- Total enrollment is forecasted to decrease by 10 students, or -2.3%, between 2020-21 and 2025-26.
 - Enrollment is forecasted to then increase by 50 students or 12.0%, between 2025-26 and 2030-31.
- **In total, enrollment is forecasted to increase by 40 students, or 9.4%, between 2020-21 and 2030-31.**



DeKalb County School District, GA

Oak View Elementary School

2020-21 Student Density



Note: Concentration represents counts of students within a quarter-mile radius. Concentrations of less than 6 students are excluded.

Legend

School Type

- ES (Red square)
- MS (Green triangle)
- HS (Blue star)
- CO (Yellow circle)
- Charter (Orange pentagon)
- Other (Purple diamond)

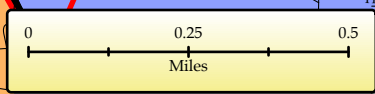
2020-21 ES Boundaries

Student Density (Quantile Classification)

- 38 - 51 (Red)
- 34 - 37 (Orange)
- 31 - 33 (Yellow)
- 28 - 30 (Light Yellow)
- 25 - 27 (Light Green)
- 21 - 24 (Light Blue)
- 16 - 20 (Light Grey)
- 12 - 15 (Medium Grey)
- 9 - 11 (Dark Grey)
- 6 - 8 (White)

2020-21 ES Zones

OAK GROVE ES	
Total Enrollment (PK-5)	426
Out of District	5
Unmatched	0
Total Live-In (PK-5)	511
Live and Attend In	390
Live Out, Attend In	36
Live In, Attend Out	121



Data Sources: DCSD, ESRI
Cartographer: SD, Feb 2021

