

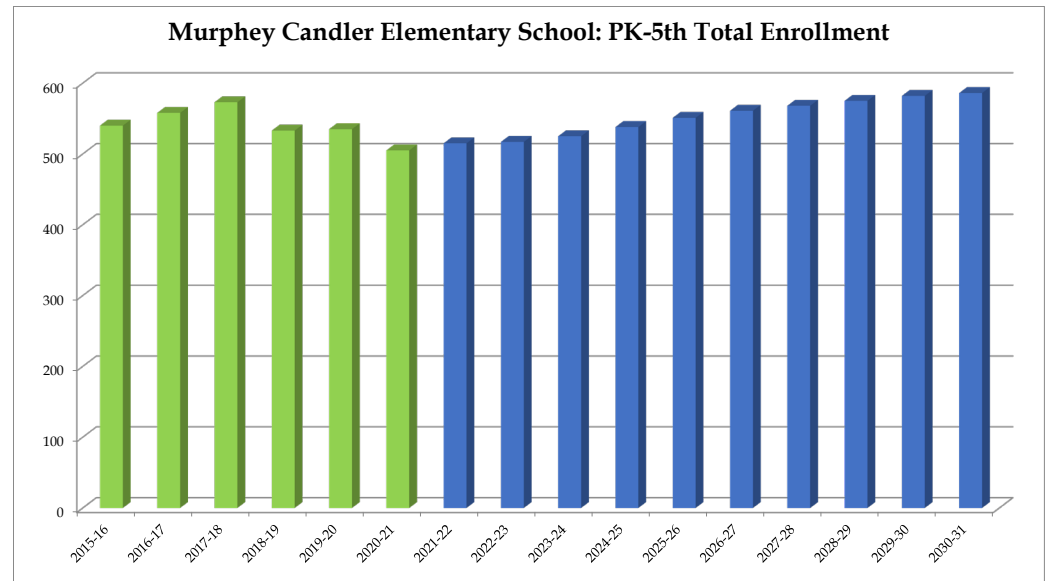
Murphy Candler Elementary School

	2015-16	2016-17	2017-18	2018-19	2019-20	2020-21	2021-22	2022-23	2023-24	2024-25	2025-26	2026-27	2027-28	2028-29	2029-30	2030-31
PK	27	32	30	29	37	33	37	37	37	37	37	37	37	37	37	37
K	79	81	72	69	73	82	84	83	84	84	85	87	88	88	89	90
1	84	82	89	81	81	72	87	86	86	87	88	89	89	90	90	91
2	97	80	85	85	82	72	73	85	84	84	85	89	90	90	91	91
3	87	90	92	79	88	79	73	74	86	85	85	86	90	91	91	92
4	91	93	99	88	88	83	80	74	75	87	86	86	87	91	92	92
5	75	100	106	102	86	84	81	78	73	74	85	87	87	88	92	93
Total: PK-5	540	558	573	533	535	505	515	517	525	538	551	561	568	575	582	586

Total: PK-5	540	558	573	533	535	505	515	517	525	538	551	561	568	575	582	586
Change		18	15	-40	2	-30	10	2	8	13	13	10	7	7	7	4
% Change		3.3%	2.7%	-7.0%	0.4%	-5.6%	2.0%	0.4%	1.5%	2.5%	2.4%	1.8%	1.2%	1.2%	1.2%	0.7%

Forecasts developed January 2021
 Green cells (2020-2021 and earlier) are historical data
 Blue cells (2021-2022 and later) are forecasted years

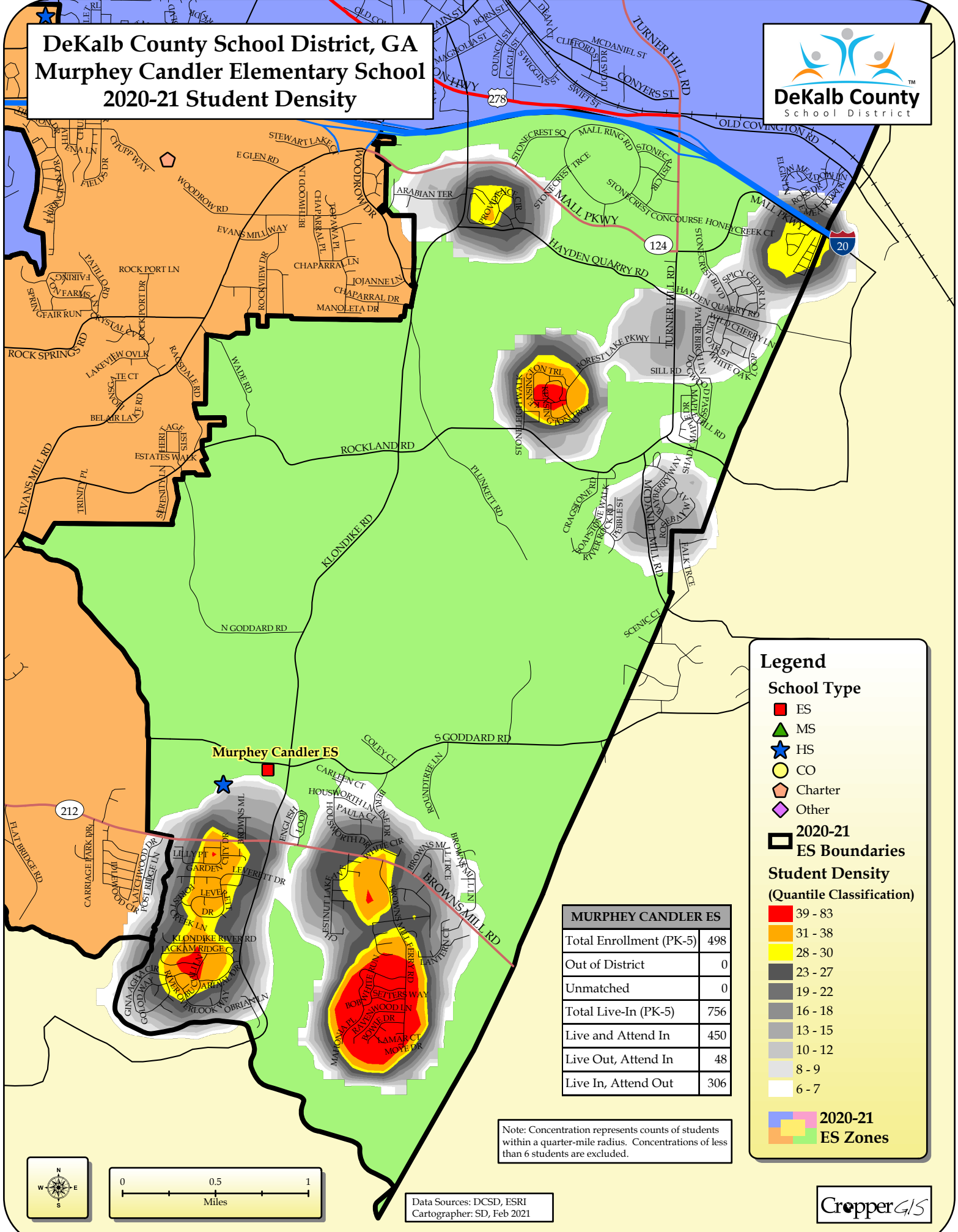
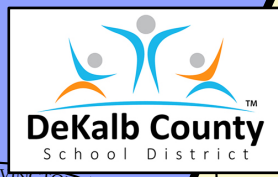
- Total enrollment is forecasted to increase by 46 students, or 9.1%, between 2020-21 and 2025-26.
 - Enrollment is forecasted to then increase by 35 students or 6.4%, between 2025-26 and 2030-31.
- **In total, enrollment is forecasted to increase by 81 students, or 16.0%, between 2020-21 and 2030-31.**



DeKalb County School District, GA

Murphey Candler Elementary School

2020-21 Student Density



Legend

School Type

- ES
- ▲ MS
- ★ HS
- CO
- ◊ Charter
- ◇ Other

2020-21 ES Boundaries

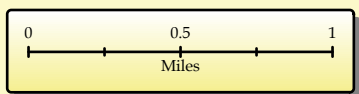
Student Density (Quantile Classification)

- 39 - 83
- 31 - 38
- 28 - 30
- 23 - 27
- 19 - 22
- 16 - 18
- 13 - 15
- 10 - 12
- 8 - 9
- 6 - 7

2020-21 ES Zones

MURPHEY CANDLER ES	
Total Enrollment (PK-5)	498
Out of District	0
Unmatched	0
Total Live-In (PK-5)	756
Live and Attend In	450
Live Out, Attend In	48
Live In, Attend Out	306

Note: Concentration represents counts of students within a quarter-mile radius. Concentrations of less than 6 students are excluded.



Data Sources: DCSD, ESRI
Cartographer: SD, Feb 2021

