

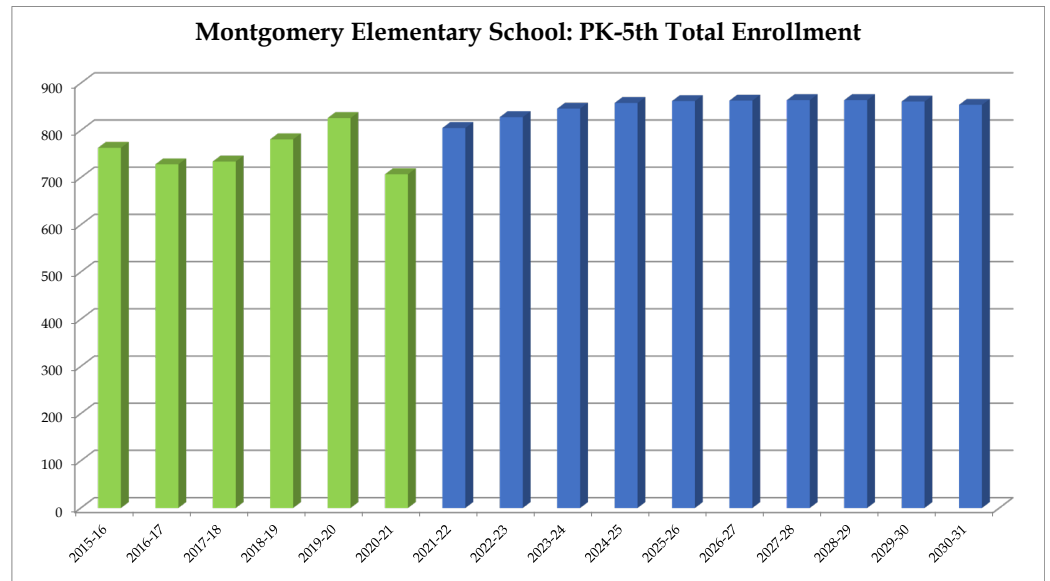
Montgomery Elementary School

	2015-16	2016-17	2017-18	2018-19	2019-20	2020-21	2021-22	2022-23	2023-24	2024-25	2025-26	2026-27	2027-28	2028-29	2029-30	2030-31
PK	22	21	22	20	22	20	21	22	22	22	22	22	22	22	22	22
K	131	125	124	162	164	94	151	150	153	155	154	151	150	149	148	146
1	146	120	132	120	165	144	146	145	144	147	149	148	147	146	145	144
2	155	134	124	129	124	133	143	145	144	143	146	148	147	146	145	144
3	130	142	133	124	136	117	132	140	142	141	140	143	145	144	143	142
4	98	92	109	108	99	102	108	116	123	125	125	125	127	129	128	127
5	81	94	90	118	116	97	104	110	118	125	126	126	126	128	130	129
Total: PK-5	763	728	734	781	826	707	805	828	846	858	862	863	864	864	861	854

Total: PK-5	763	728	734	781	826	707	805	828	846	858	862	863	864	864	861	854
Change		-35	6	47	45	-119	98	23	18	12	4	1	1	0	-3	-7
% Change		-4.6%	0.8%	6.4%	5.8%	-14.4%	13.9%	2.9%	2.2%	1.4%	0.5%	0.1%	0.1%	0.0%	-0.3%	-0.8%

Forecasts developed January 2021
 Green cells (2020-2021 and earlier) are historical data
 Blue cells (2021-2022 and later) are forecasted years

- Total enrollment is forecasted to increase by 155 students, or 21.9%, between 2020-21 and 2025-26.
 - Enrollment is forecasted to then decrease by 8 students or -0.9%, between 2025-26 and 2030-31.
- **In total, enrollment is forecasted to increase by 147 students, or 20.8%, between 2020-21 and 2030-31.**



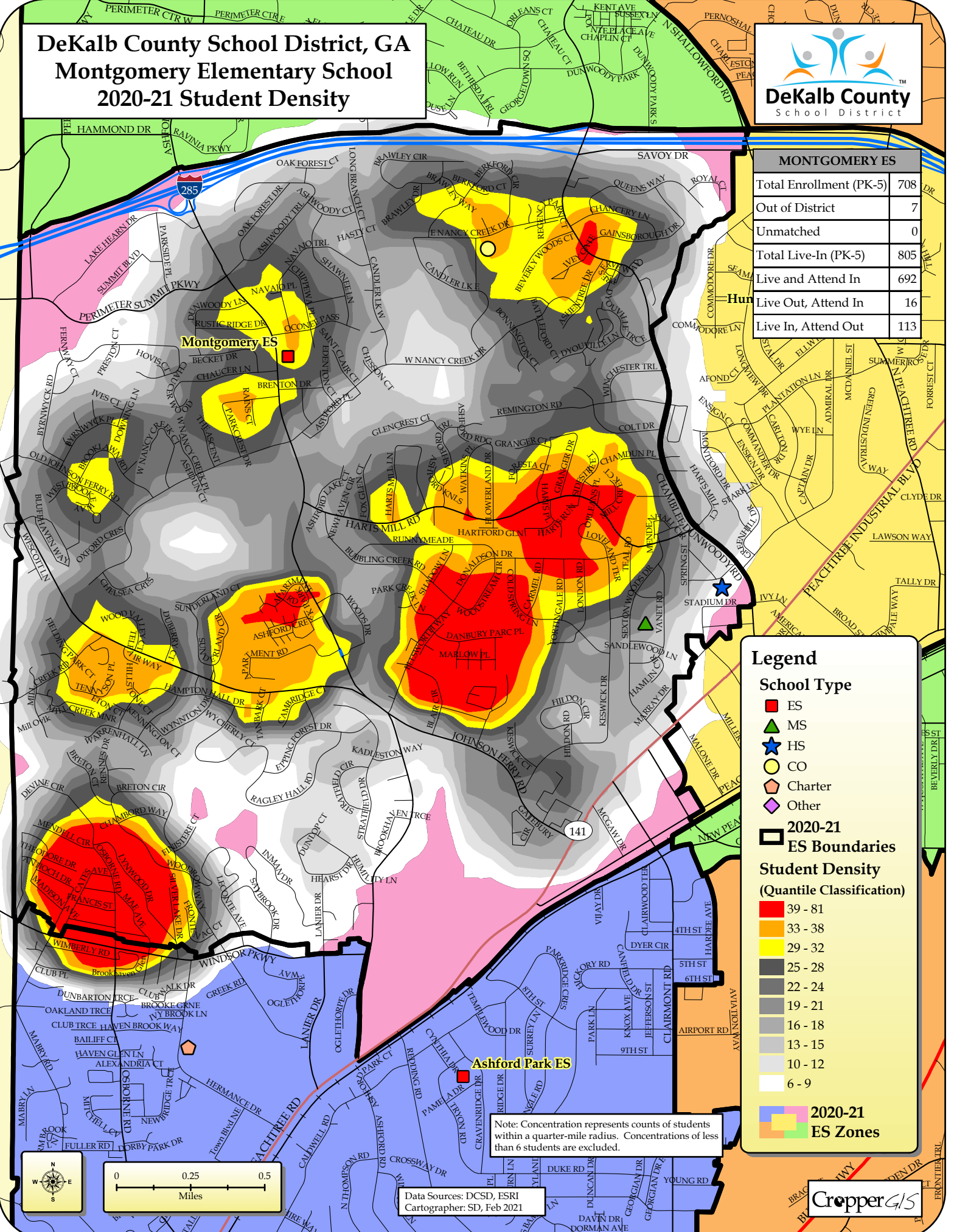
DeKalb County School District, GA

Montgomery Elementary School

2020-21 Student Density



MONTGOMERY ES	
Total Enrollment (PK-5)	708
Out of District	7
Unmatched	0
Total Live-In (PK-5)	805
Live and Attend In	692
Live Out, Attend In	16
Live In, Attend Out	113



Legend

School Type

- ES (Red square)
- MS (Green triangle)
- HS (Blue star)
- CO (Yellow circle)
- Charter (Orange pentagon)
- Other (Purple diamond)

2020-21 ES Boundaries (Black outline)

Student Density (Quantile Classification)

- 39 - 81 (Red)
- 33 - 38 (Orange)
- 29 - 32 (Yellow)
- 25 - 28 (Light Yellow)
- 22 - 24 (Light Green)
- 19 - 21 (Light Blue)
- 16 - 18 (Light Purple)
- 13 - 15 (Light Grey)
- 10 - 12 (Light Blue-Grey)
- 6 - 9 (White)

2020-21 ES Zones (Color swatches)

Note: Concentration represents counts of students within a quarter-mile radius. Concentrations of less than 6 students are excluded.

Data Sources: DCSD, ESRI
Cartographer: SD, Feb 2021

