

### Lithonia Middle School

|                   | 2015-16     | 2016-17     | 2017-18     | 2018-19     | 2019-20     | 2020-21     | 2021-22     | 2022-23     | 2023-24     | 2024-25     | 2025-26    | 2026-27    | 2027-28    | 2028-29    | 2029-30    | 2030-31     |
|-------------------|-------------|-------------|-------------|-------------|-------------|-------------|-------------|-------------|-------------|-------------|------------|------------|------------|------------|------------|-------------|
| 6                 | 368         | 366         | 355         | 421         | 367         | 425         | 339         | 356         | 341         | 340         | 319        | 331        | 331        | 332        | 339        | 348         |
| 7                 | 339         | 361         | 326         | 377         | 393         | 372         | 417         | 329         | 345         | 331         | 330        | 309        | 321        | 321        | 322        | 329         |
| 8                 | 362         | 337         | 407         | 339         | 380         | 397         | 379         | 425         | 336         | 352         | 338        | 337        | 315        | 327        | 327        | 328         |
| <b>Total: 6-8</b> | <b>1069</b> | <b>1064</b> | <b>1088</b> | <b>1137</b> | <b>1140</b> | <b>1194</b> | <b>1135</b> | <b>1110</b> | <b>1022</b> | <b>1023</b> | <b>987</b> | <b>977</b> | <b>967</b> | <b>980</b> | <b>988</b> | <b>1005</b> |

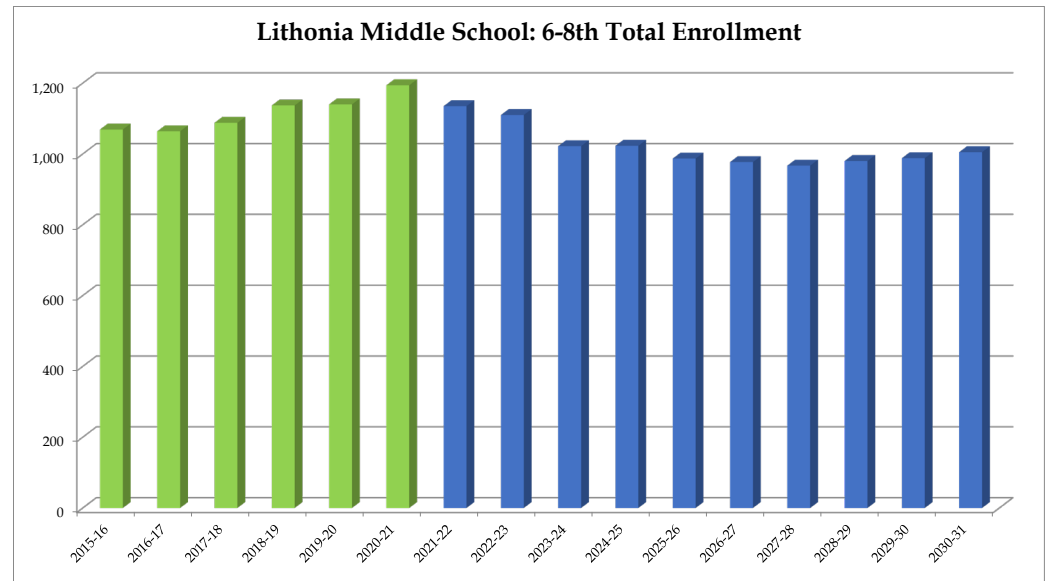
|                   |             |             |             |             |             |             |             |             |             |             |            |            |            |            |            |             |
|-------------------|-------------|-------------|-------------|-------------|-------------|-------------|-------------|-------------|-------------|-------------|------------|------------|------------|------------|------------|-------------|
| <b>Total: 6-8</b> | <b>1069</b> | <b>1064</b> | <b>1088</b> | <b>1137</b> | <b>1140</b> | <b>1194</b> | <b>1135</b> | <b>1110</b> | <b>1022</b> | <b>1023</b> | <b>987</b> | <b>977</b> | <b>967</b> | <b>980</b> | <b>988</b> | <b>1005</b> |
| <b>Change</b>     |             | -5          | 24          | 49          | 3           | 54          | -59         | -25         | -88         | 1           | -36        | -10        | -10        | 13         | 8          | 17          |
| <b>% Change</b>   |             | -0.5%       | 2.3%        | 4.5%        | 0.3%        | 4.7%        | -4.9%       | -2.2%       | -7.9%       | 0.1%        | -3.5%      | -1.0%      | -1.0%      | 1.3%       | 0.8%       | 1.7%        |

Forecasts developed January 2021

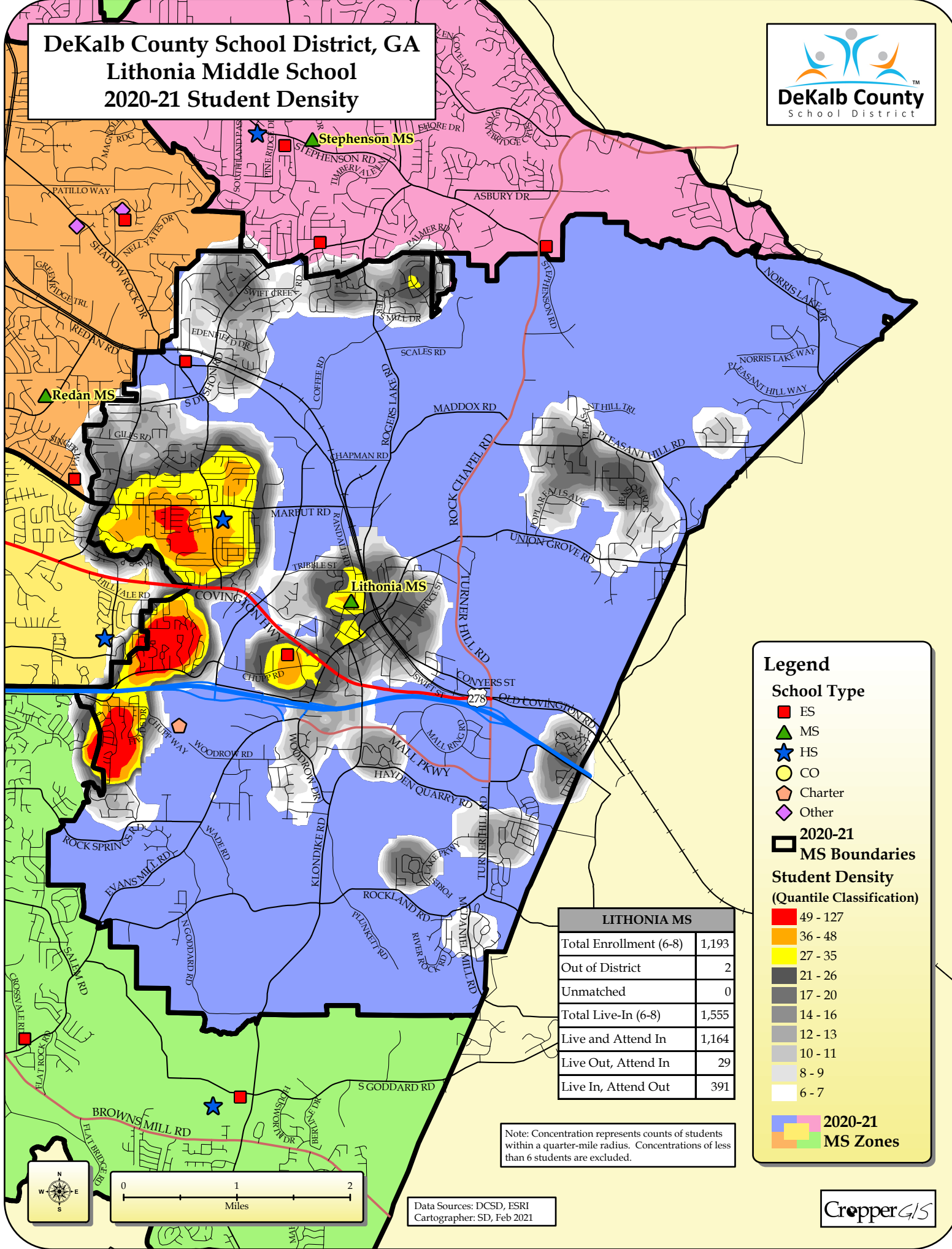
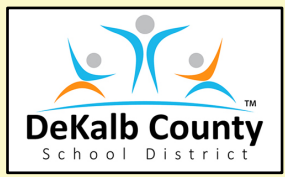
Green cells (2020-2021 and earlier) are historical data

Blue cells (2021-2022 and later) are forecasted years

- Total enrollment is forecasted to decrease by 207 students, or -17.3%, between 2020-21 and 2025-26.
  - Enrollment is forecasted to then increase by 18 students or 1.8%, between 2025-26 and 2030-31.
- **In total, enrollment is forecasted to decrease by 189 students, or -15.8%, between 2020-21 and 2030-31.**



DeKalb County School District, GA  
 Lithonia Middle School  
 2020-21 Student Density



**Legend**

**School Type**

- ES
- ▲ MS
- ★ HS
- CO
- ⬠ Charter
- ◆ Other
- ▭ 2020-21 MS Boundaries

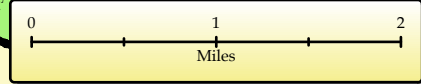
**Student Density (Quantile Classification)**

- 49 - 127
- 36 - 48
- 27 - 35
- 21 - 26
- 17 - 20
- 14 - 16
- 12 - 13
- 10 - 11
- 8 - 9
- 6 - 7

■ 2020-21 MS Zones

| LITHONIA MS            |       |
|------------------------|-------|
| Total Enrollment (6-8) | 1,193 |
| Out of District        | 2     |
| Unmatched              | 0     |
| Total Live-In (6-8)    | 1,555 |
| Live and Attend In     | 1,164 |
| Live Out, Attend In    | 29    |
| Live In, Attend Out    | 391   |

Note: Concentration represents counts of students within a quarter-mile radius. Concentrations of less than 6 students are excluded.



Data Sources: DCSD, ESRI  
 Cartographer: SD, Feb 2021

