

Lithonia High School

	2015-16	2016-17	2017-18	2018-19	2019-20	2020-21	2021-22	2022-23	2023-24	2024-25	2025-26	2026-27	2027-28	2028-29	2029-30	2030-31
9	448	437	413	432	440	439	480	451	506	400	419	402	401	375	389	389
10	357	324	306	325	337	340	338	370	347	390	308	323	310	309	289	300
11	320	278	344	284	294	297	313	311	340	319	359	283	297	285	284	266
12	293	305	264	329	291	311	294	310	308	337	316	355	280	294	282	281
Total: 9-12	1,418	1,344	1,327	1,370	1,362	1,387	1,425	1,442	1,501	1,446	1,402	1,363	1,288	1,263	1,244	1,236

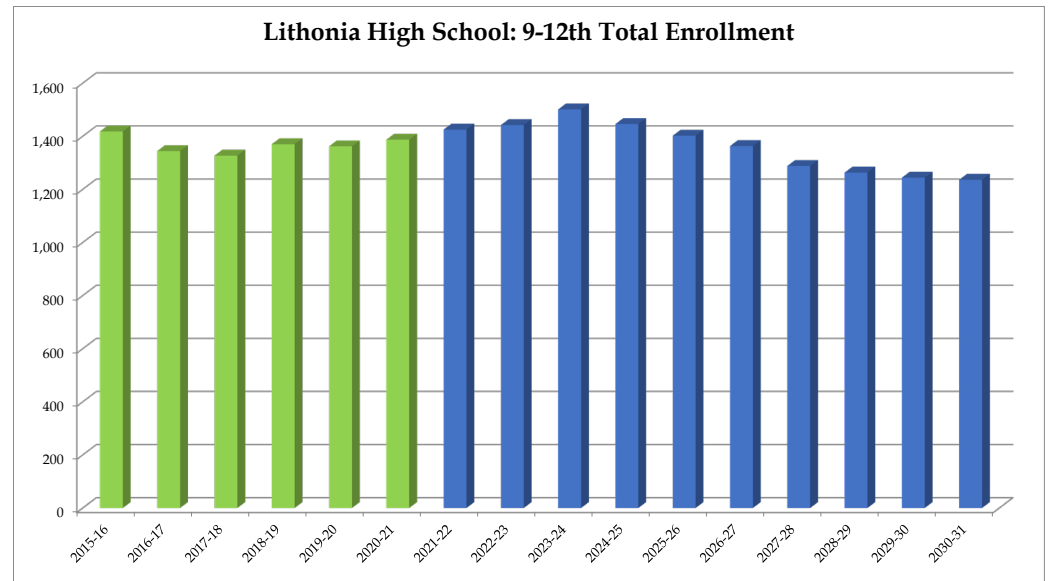
Total: 9-12	1,418	1,344	1,327	1,370	1,362	1,387	1,425	1,442	1,501	1,446	1,402	1,363	1,288	1,263	1,244	1,236
Change		-74	-17	43	-8	25	38	17	59	-55	-44	-39	-75	-25	-19	-8
% Change		-5.2%	-1.3%	3.2%	-0.6%	1.8%	2.7%	1.2%	4.1%	-3.7%	-3.0%	-2.8%	-5.5%	-1.9%	-1.5%	-0.6%

Forecasts developed January 2021

Green cells (2020-2021 and earlier) are historical data

Blue cells (2021-2022 and later) are forecasted years

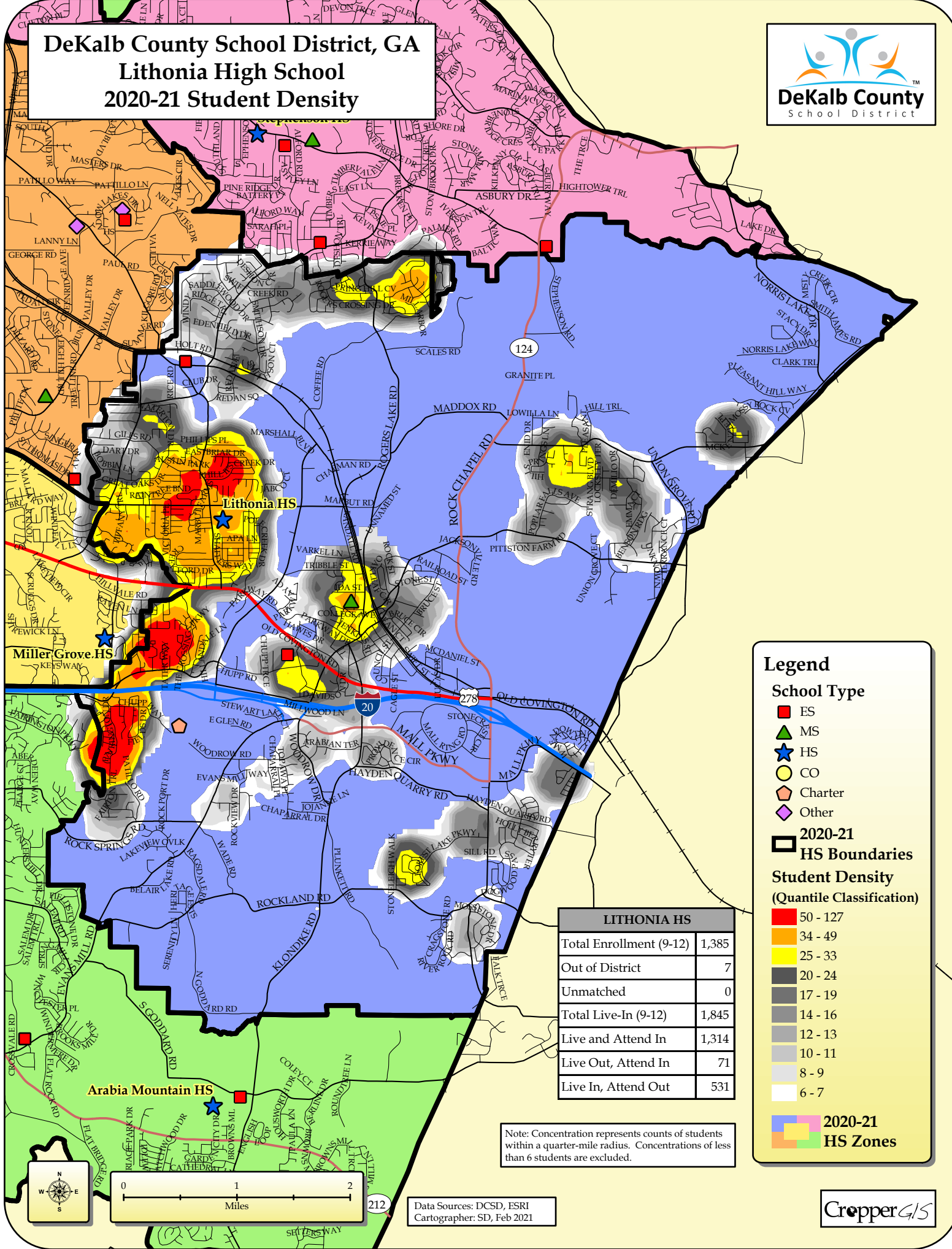
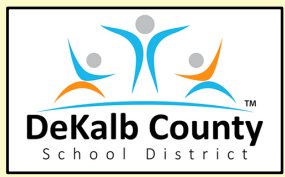
- Total enrollment is forecasted to increase by 15 students, or 1.1%, between 2020-21 and 2025-26.
- Enrollment is forecasted to then decrease by 166 students or -11.8%, between 2025-26 and 2030-31.
- **In total, enrollment is forecasted to decrease by 151 students, or -10.9%, between 2020-21 and 2030-31.**



DeKalb County School District, GA

Lithonia High School

2020-21 Student Density



Legend

School Type

- ES
- ▲ MS
- ★ HS
- CO
- ◊ Charter
- ◆ Other

2020-21 HS Boundaries

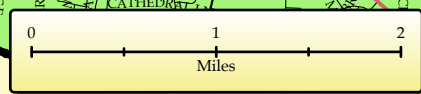
Student Density (Quantile Classification)

- 50 - 127
- 34 - 49
- 25 - 33
- 20 - 24
- 17 - 19
- 14 - 16
- 12 - 13
- 10 - 11
- 8 - 9
- 6 - 7

2020-21 HS Zones

LITHONIA HS	
Total Enrollment (9-12)	1,385
Out of District	7
Unmatched	0
Total Live-In (9-12)	1,845
Live and Attend In	1,314
Live Out, Attend In	71
Live In, Attend Out	531

Note: Concentration represents counts of students within a quarter-mile radius. Concentrations of less than 6 students are excluded.



Data Sources: DCSD, ESRI
Cartographer: SD, Feb 2021

