

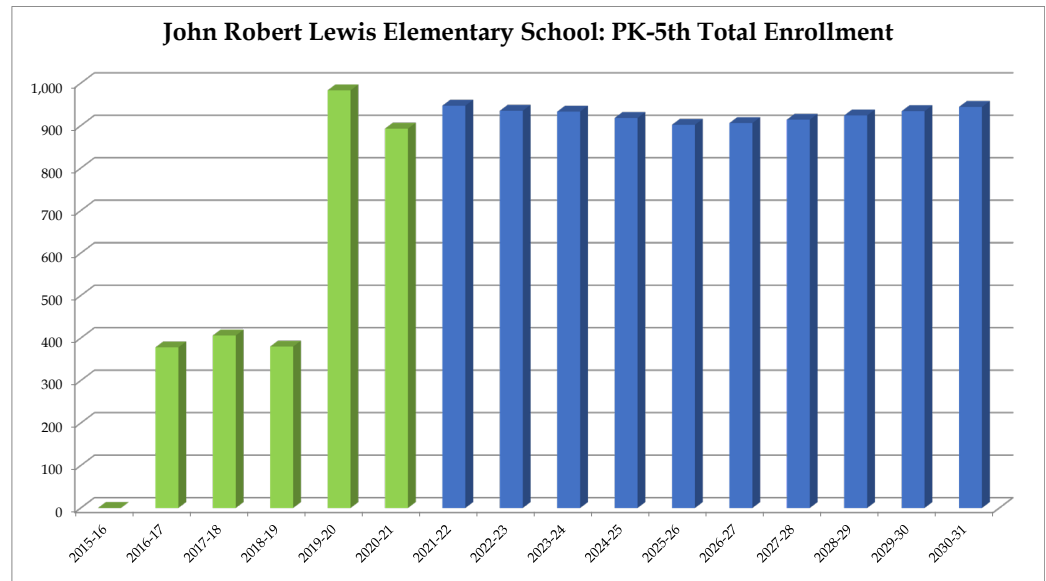
John Robert Lewis Elementary School

	2015-16	2016-17	2017-18	2018-19	2019-20	2020-21	2021-22	2022-23	2023-24	2024-25	2025-26	2026-27	2027-28	2028-29	2029-30	2030-31
PK	0	22	22	22	65	53	62	65	65	65	65	65	65	65	65	65
K	0	57	66	45	152	99	133	132	134	136	138	139	141	142	144	146
1	0	59	57	66	167	156	138	136	135	137	139	141	142	144	145	147
2	0	61	62	55	153	154	158	139	137	136	138	140	142	143	145	146
3	0	73	71	65	157	143	157	161	142	140	139	141	143	145	146	148
4	0	64	74	71	151	153	144	159	163	143	141	140	142	144	146	147
5	0	42	54	56	138	135	155	143	157	161	142	140	139	141	143	145
Total: PK-5	0	378	406	380	983	893	947	935	933	918	902	906	914	924	934	944

Total: PK-5	0	378	406	380	983	893	947	935	933	918	902	906	914	924	934	944
Change		378	28	-26	603	-90	54	-12	-2	-15	-16	4	8	10	10	10
% Change			7.4%	-6.4%	158.7%	-9.2%	6.0%	-1.3%	-0.2%	-1.6%	-1.7%	0.4%	0.9%	1.1%	1.1%	1.1%

Forecasts developed January 2021
 Green cells (2020-2021 and earlier) are historical data
 Blue cells (2021-2022 and later) are forecasted years

- Total enrollment is forecasted to increase by 9 students, or 1.0%, between 2020-21 and 2025-26.
 - Enrollment is forecasted to then increase by 42 students or 4.7%, between 2025-26 and 2030-31.
- **In total, enrollment is forecasted to increase by 51 students, or 5.7%, between 2020-21 and 2030-31.**



DeKalb County School District, GA

John R. Lewis Elementary School

2020-21 Student Density



Note: Concentration represents counts of students within a quarter-mile radius. Concentrations of less than 6 students are excluded.

Legend

School Type

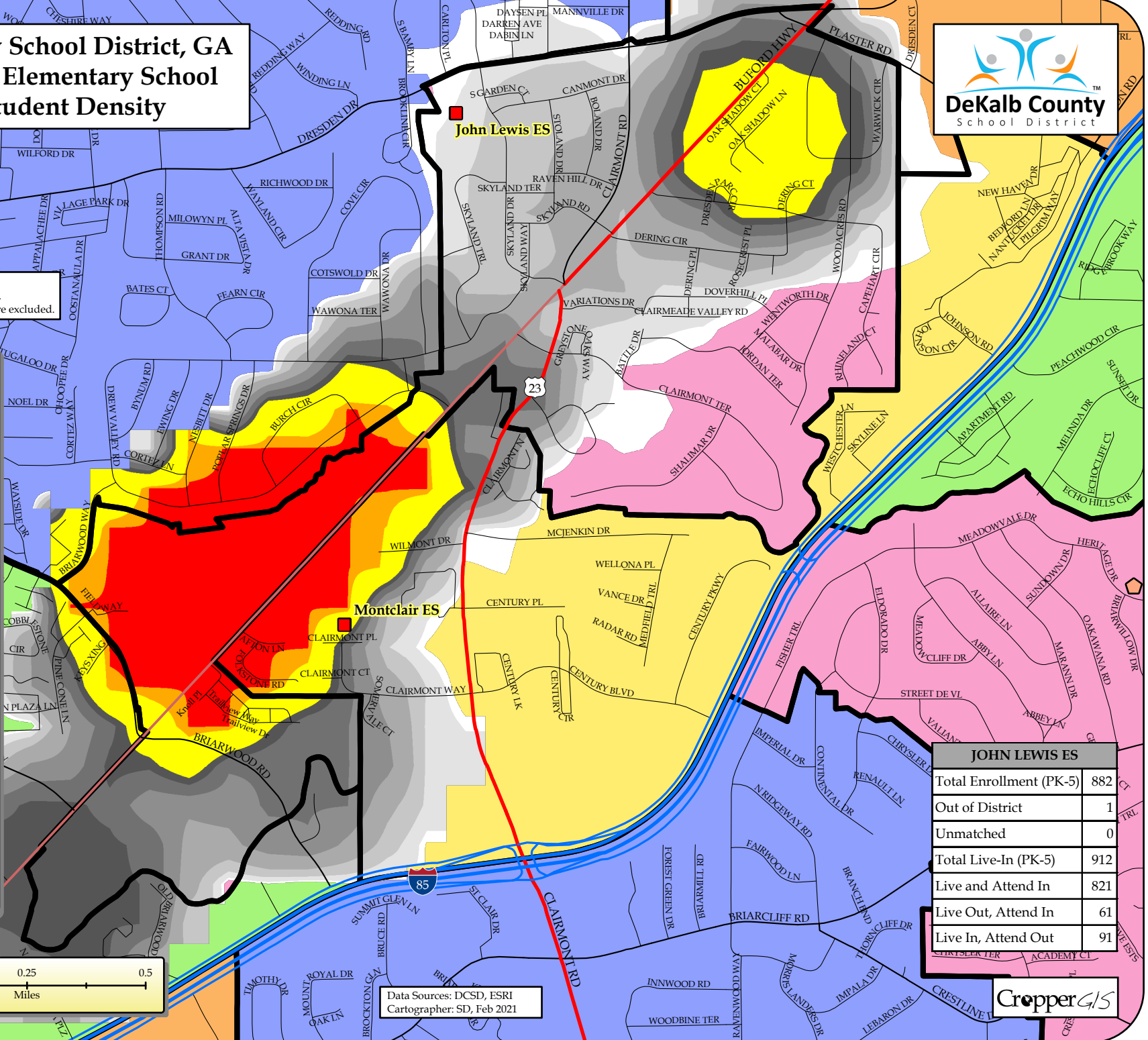
- ES (Red square)
- MS (Green triangle)
- HS (Blue star)
- CO (Yellow circle)
- Charter (Orange diamond)
- Other (Purple diamond)

2020-21 ES Boundaries

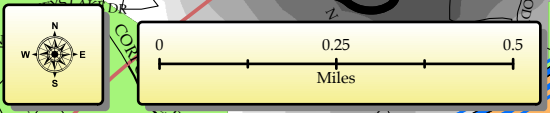
Student Density (Quantile Classification)

- 127 (Red)
- 121 - 126 (Orange)
- 85 - 120 (Yellow)
- 75 - 84 (Light Yellow)
- 59 - 74 (Light Green)
- 42 - 58 (Light Blue)
- 24 - 41 (Light Purple)
- 14 - 23 (Light Grey)
- 8 - 13 (Light Blue-Grey)
- 6 - 7 (White)

2020-21 ES Zones



JOHN LEWIS ES	
Total Enrollment (PK-5)	882
Out of District	1
Unmatched	0
Total Live-In (PK-5)	912
Live and Attend In	821
Live Out, Attend In	61
Live In, Attend Out	91



Data Sources: DCSD, ESRI
Cartographer: SD, Feb 2021

