

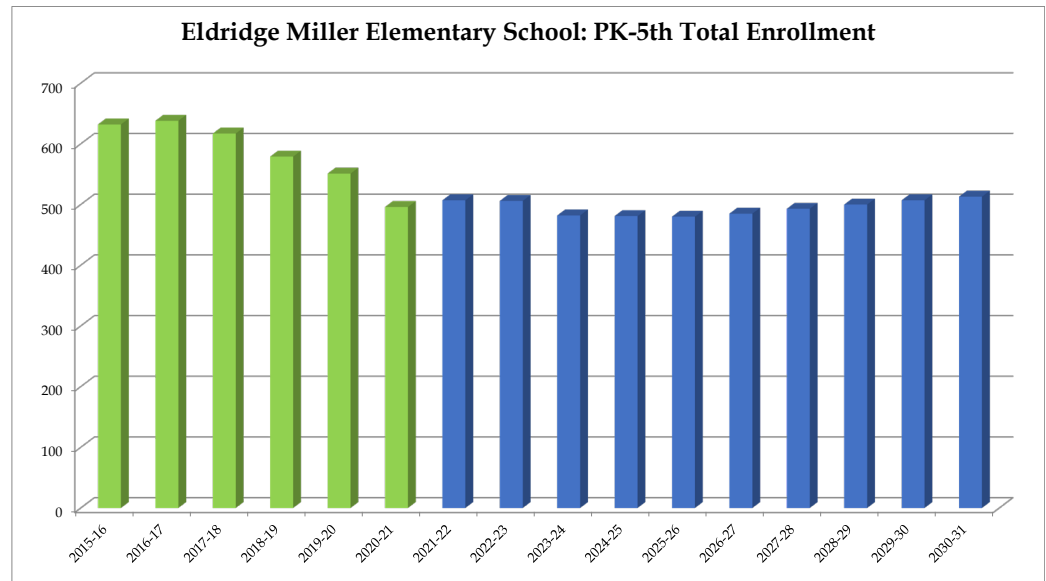
### Eldridge Miller Elementary School

	2015-16	2016-17	2017-18	2018-19	2019-20	2020-21	2021-22	2022-23	2023-24	2024-25	2025-26	2026-27	2027-28	2028-29	2029-30	2030-31
PK	43	44	40	44	43	23	38	43	43	43	43	43	43	43	43	43
K	91	84	103	72	85	61	76	76	77	78	80	81	83	84	86	85
1	98	110	78	96	75	79	75	74	74	75	76	78	79	81	82	84
2	118	88	95	70	99	76	78	74	73	73	74	74	76	77	79	80
3	106	102	100	103	68	96	74	76	72	71	71	73	73	74	75	77
4	100	109	102	94	85	74	93	71	73	69	68	69	71	71	72	73
5	76	101	99	100	96	87	73	92	70	72	68	67	68	70	70	71
<b>Total: PK-5</b>	<b>632</b>	<b>638</b>	<b>617</b>	<b>579</b>	<b>551</b>	<b>496</b>	<b>507</b>	<b>506</b>	<b>482</b>	<b>481</b>	<b>480</b>	<b>485</b>	<b>493</b>	<b>500</b>	<b>507</b>	<b>513</b>

<b>Total: PK-5</b>	<b>632</b>	<b>638</b>	<b>617</b>	<b>579</b>	<b>551</b>	<b>496</b>	<b>507</b>	<b>506</b>	<b>482</b>	<b>481</b>	<b>480</b>	<b>485</b>	<b>493</b>	<b>500</b>	<b>507</b>	<b>513</b>
<b>Change</b>		6	-21	-38	-28	-55	11	-1	-24	-1	-1	5	8	7	7	6
<b>% Change</b>		0.9%	-3.3%	-6.2%	-4.8%	-10.0%	2.2%	-0.2%	-4.7%	-0.2%	-0.2%	1.0%	1.6%	1.4%	1.4%	1.2%

Forecasts developed January 2021  
 Green cells (2020-2021 and earlier) are historical data  
 Blue cells (2021-2022 and later) are forecasted years

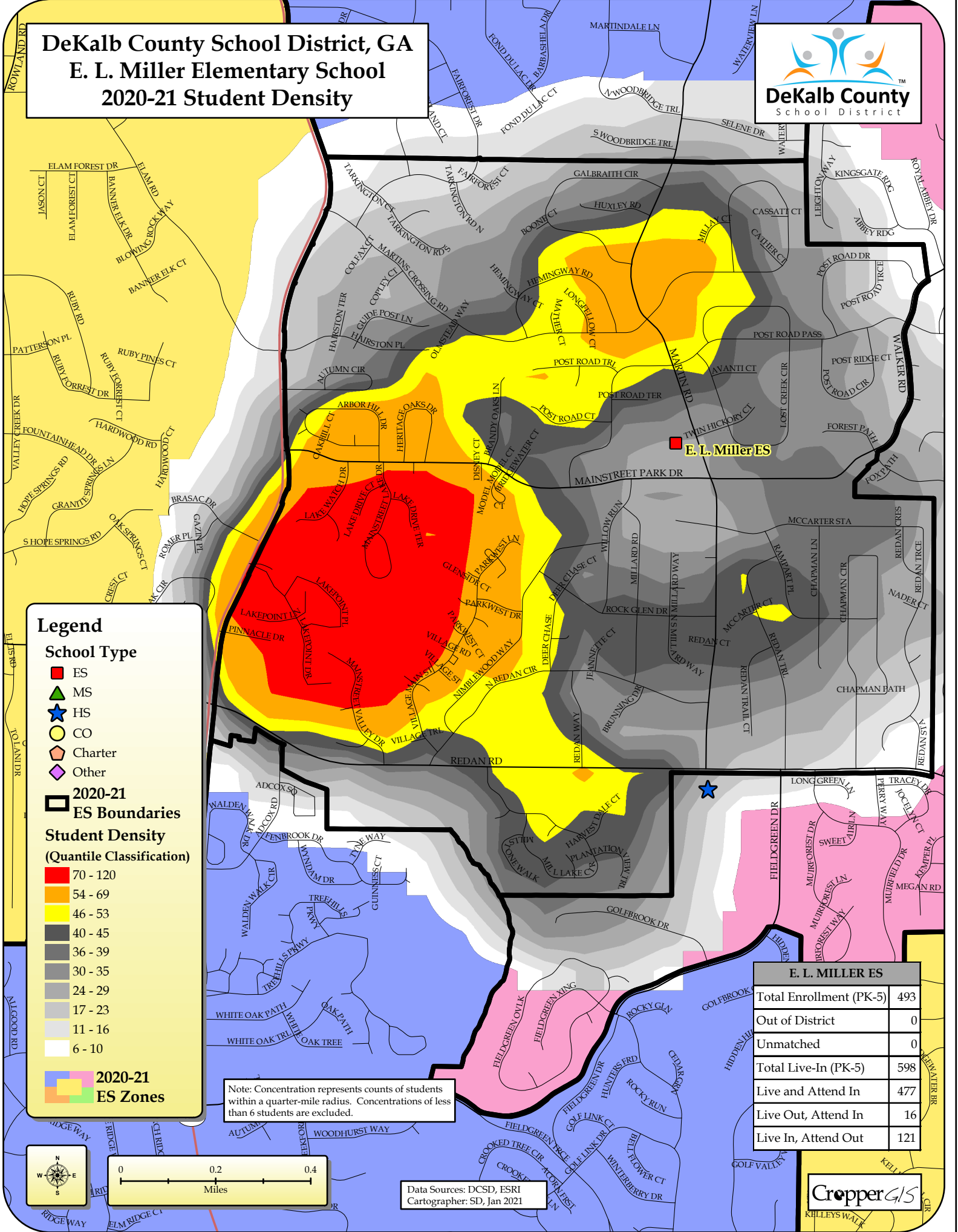
- Total enrollment is forecasted to decrease by 16 students, or -3.2%, between 2020-21 and 2025-26.
  - Enrollment is forecasted to then increase by 33 students or 6.9%, between 2025-26 and 2030-31.
- **In total, enrollment is forecasted to increase by 17 students, or 3.4%, between 2020-21 and 2030-31.**



# DeKalb County School District, GA

## E. L. Miller Elementary School

### 2020-21 Student Density



#### Legend

##### School Type

- ES
- ▲ MS
- ★ HS
- CO
- ◊ Charter
- ◆ Other

##### 2020-21 ES Boundaries

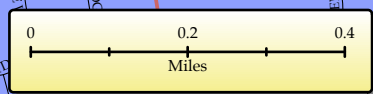
##### Student Density (Quantile Classification)

- 70 - 120
- 54 - 69
- 46 - 53
- 40 - 45
- 36 - 39
- 30 - 35
- 24 - 29
- 17 - 23
- 11 - 16
- 6 - 10

##### 2020-21 ES Zones

Note: Concentration represents counts of students within a quarter-mile radius. Concentrations of less than 6 students are excluded.

E. L. MILLER ES	
Total Enrollment (PK-5)	493
Out of District	0
Unmatched	0
Total Live-In (PK-5)	598
Live and Attend In	477
Live Out, Attend In	16
Live In, Attend Out	121



Data Sources: DCSD, ESRI  
Cartographer: SD, Jan 2021

