

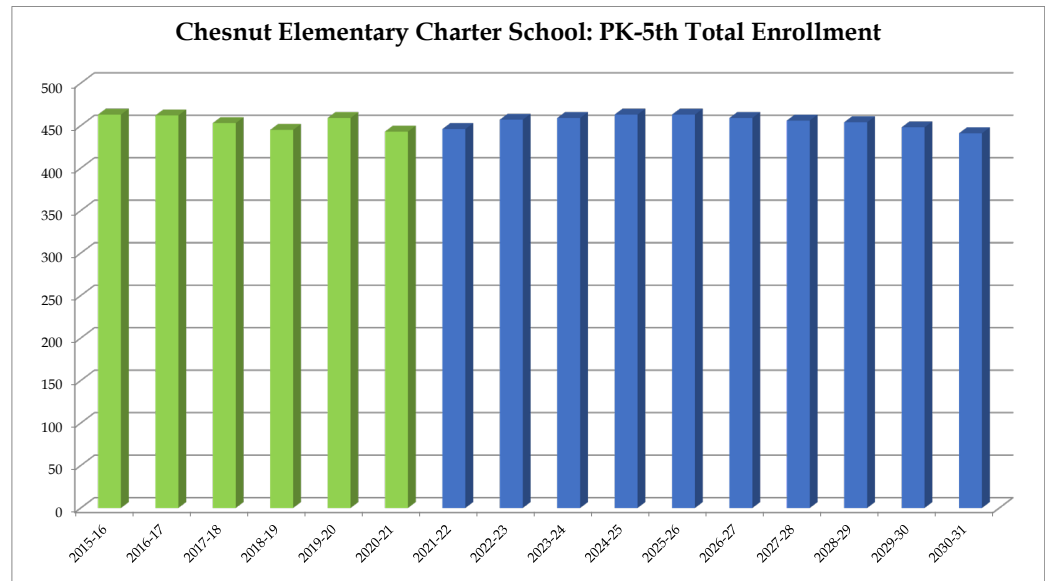
Chesnut Elementary Charter School

	2015-16	2016-17	2017-18	2018-19	2019-20	2020-21	2021-22	2022-23	2023-24	2024-25	2025-26	2026-27	2027-28	2028-29	2029-30	2030-31
PK	22	22	22	22	22	20	21	22	22	22	22	22	22	22	22	22
K	68	80	65	68	78	68	71	70	72	73	73	72	70	69	67	66
1	63	65	75	63	75	72	71	70	69	71	72	72	71	69	68	66
2	72	81	70	65	72	71	76	75	74	73	75	75	75	74	72	71
3	68	68	80	74	71	74	72	78	77	75	74	76	76	76	75	73
4	78	70	71	72	72	63	73	70	76	75	73	71	73	73	73	72
5	92	76	70	81	69	75	62	72	69	74	74	71	69	71	71	71
Total: PK-5	463	462	453	445	459	443	446	457	459	463	463	459	456	454	448	441

Total: PK-5	463	462	453	445	459	443	446	457	459	463	463	459	456	454	448	441
Change		-1	-9	-8	14	-16	3	11	2	4	0	-4	-3	-2	-6	-7
% Change		-0.2%	-1.9%	-1.8%	3.1%	-3.5%	0.7%	2.5%	0.4%	0.9%	0.0%	-0.9%	-0.7%	-0.4%	-1.3%	-1.6%

Forecasts developed January 2021
 Green cells (2020-2021 and earlier) are historical data
 Blue cells (2021-2022 and later) are forecasted years

- Total enrollment is forecasted to increase by 20 students, or 4.5%, between 2020-21 and 2025-26.
 - Enrollment is forecasted to then decrease by 22 students or -4.8%, between 2025-26 and 2030-31.
- **In total, enrollment is forecasted to decrease by 2 students, or -0.5%, between 2020-21 and 2030-31.**



DeKalb County School District, GA

Chestnut Elementary School

2020-21 Student Density



Note: Concentration represents counts of students within a quarter-mile radius. Concentrations of less than 6 students are excluded.

Legend

School Type

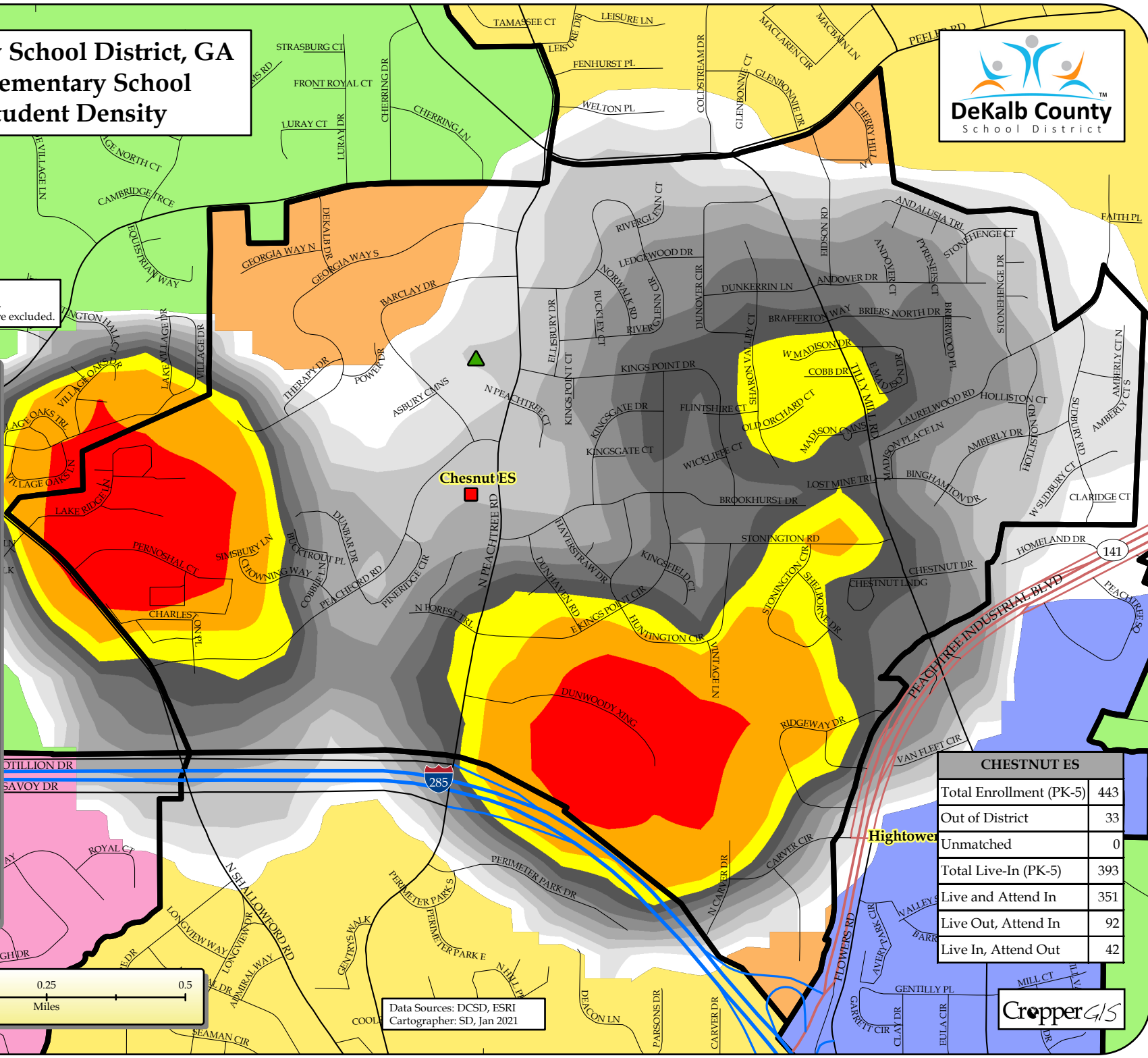
- ES
- ▲ MS
- ★ HS
- CO
- ◇ Charter
- ◇ Other

2020-21 ES Boundaries

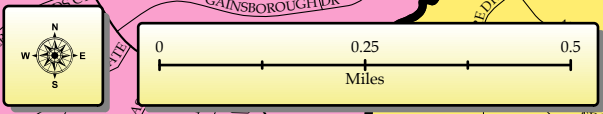
Student Density (Quantile Classification)

- 64 - 96
- 45 - 63
- 38 - 44
- 33 - 37
- 28 - 32
- 22 - 27
- 17 - 21
- 13 - 16
- 9 - 12
- 6 - 8

2020-21 ES Zones



CHESTNUT ES	
Total Enrollment (PK-5)	443
Out of District	33
Unmatched	0
Total Live-In (PK-5)	393
Live and Attend In	351
Live Out, Attend In	92
Live In, Attend Out	42



Data Sources: DCSD, ESRI
Cartographer: SD, Jan 2021

